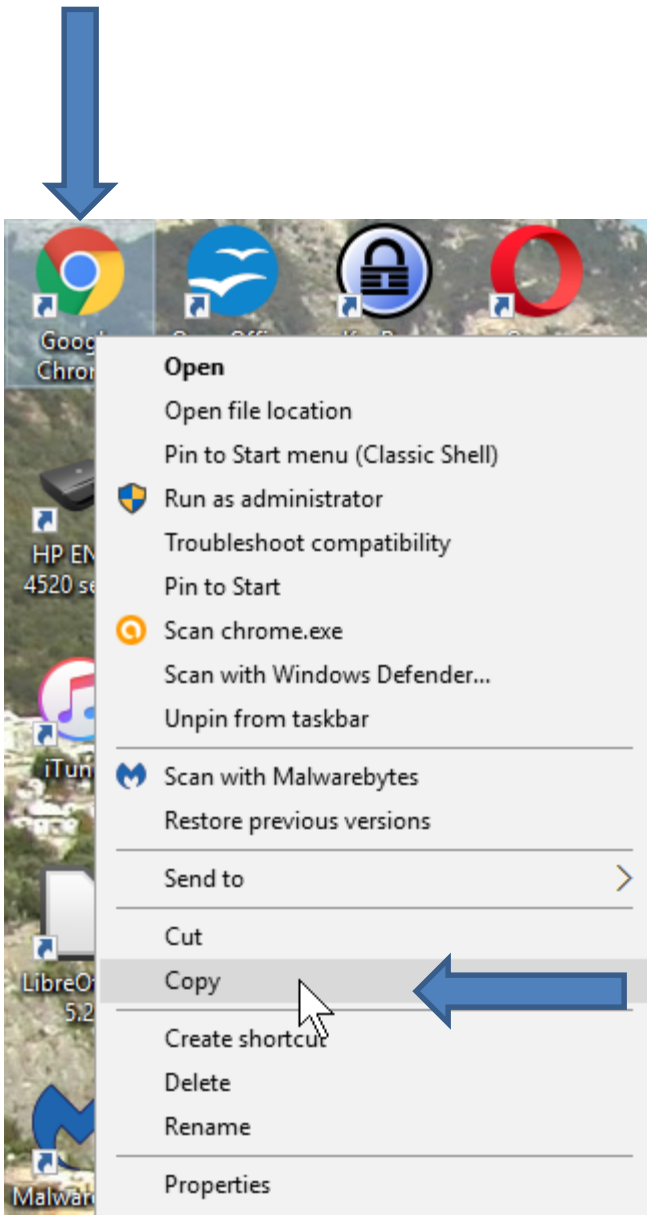


Step 1 - How to set up Windows 10 to automatically open a Browser when you turn on your computer.

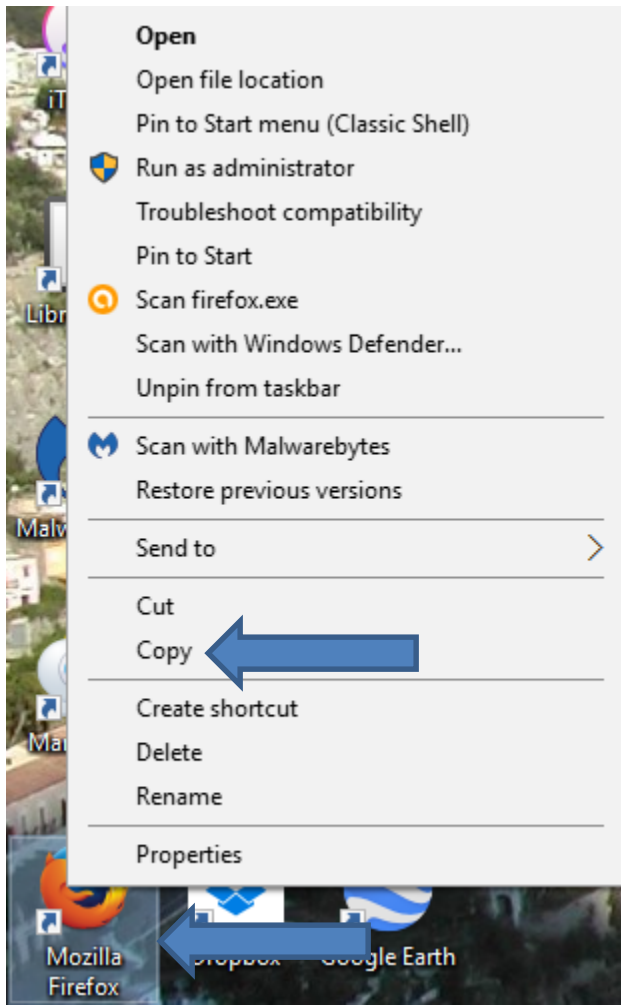
- If you just only want to use your e-mail and do some other things on a Browser on your computer, you may want to set up Windows 10 to automatically open a Browser when you turn on your computer.**
- Note – it is faster to just click on the Browser icon on the Taskbar vs. automatically open a Browser when you turn on your computer.**
- It is a little difficult to set it up.**
- Next explains more about it.**

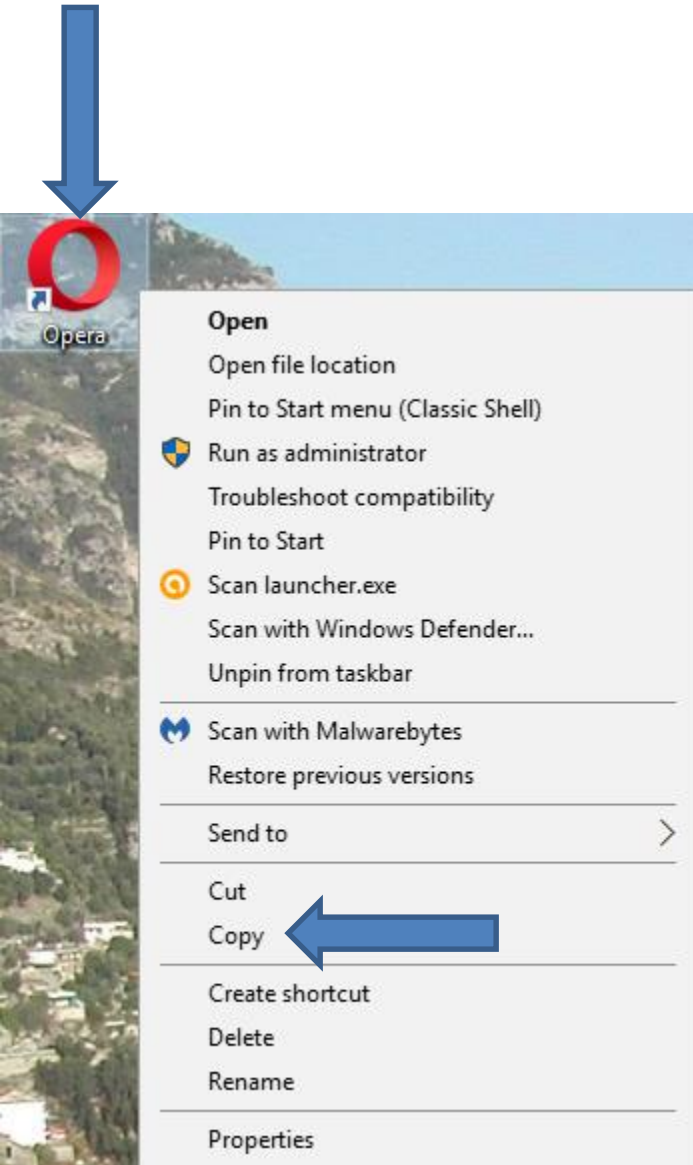
- **I set up the automatically open a Browser on Windows 10 when you turn on your computer for a friend that she wanted it.**
- **If you don't want it, close this PDF file and go to another Step.**
- **If you want it or view how to do it.**
- **I will showing you how to copy the Browsers and paste on a page that sets up the Browser to automatically open it when you turn on your computer. The Browsers are the same as I did in the other Steps in the other page.**
- **If you down loaded new Browsers as I showed you in Step 1 in the other page, next is how to copy them. You copy the one you want.**



- If you downloaded Google Chrome, and you want to use that one, you go to the Desktop and you see the Google Chrome icon and then you right click it and click on **Copy**.
- Next is a sample of Mozilla Firefox.

- If you downloaded Mozilla Firefox and you want to use that one, you go to the Desktop and you see the Mozilla Firefox icon and you right click it and click on **Copy**.
- Next is a sample of Opera

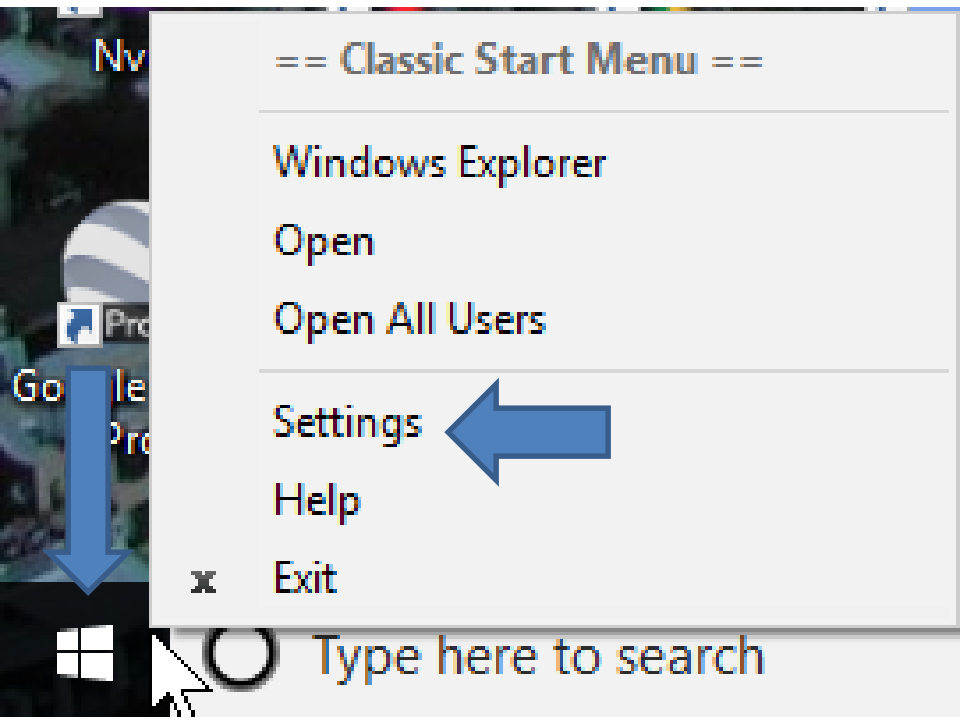




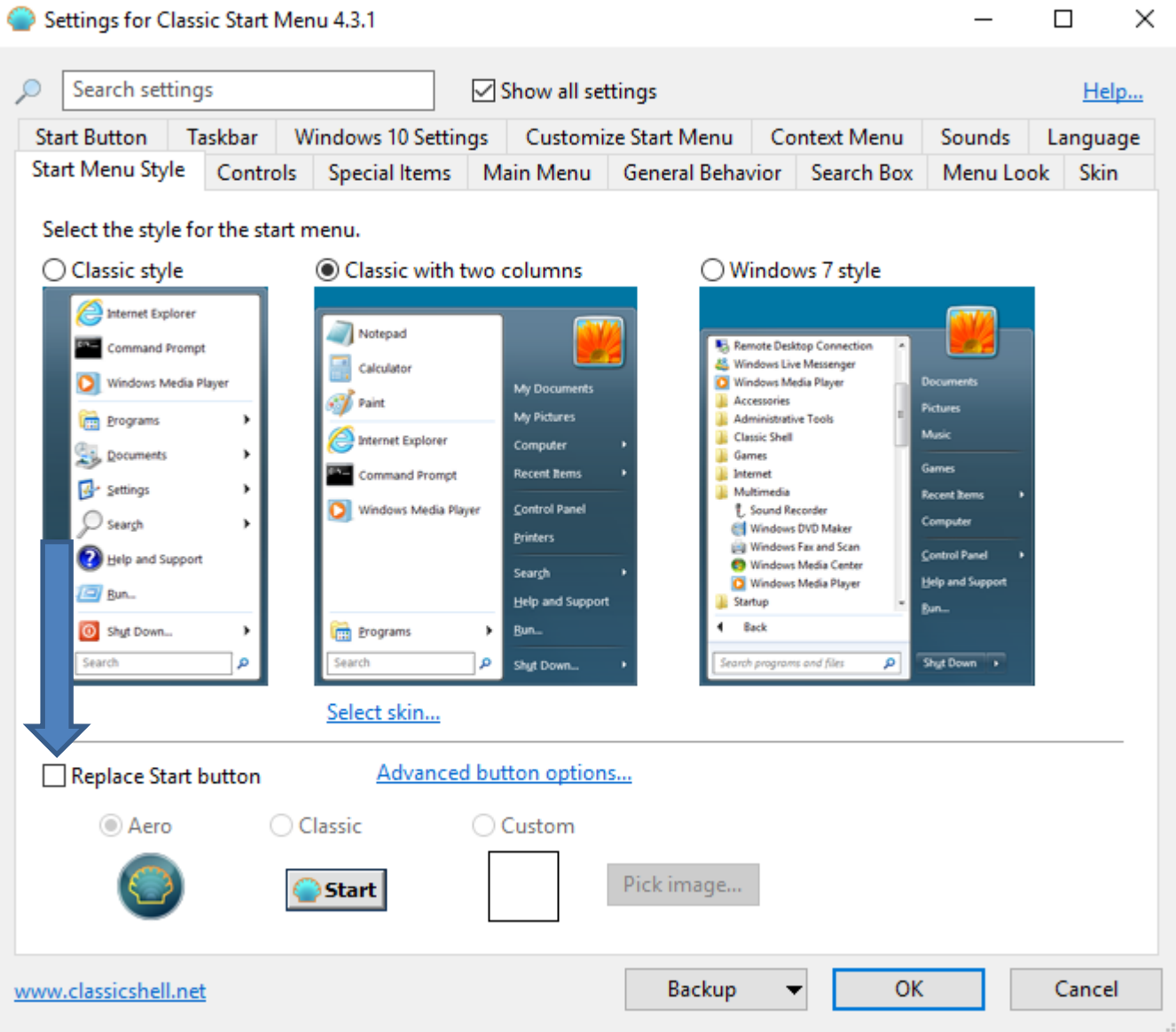
- If you downloaded Opera and you want to use that one, you go to the Desktop and you see the Opera icon and you right click it and click on Copy.
- Next is how to copy **Microsoft Edge & Internet Explorer**, which is not as easy unless you download **Classic Start Menu**. Next explains again how to download **Classic Start Menu**.

- **As I mentioned in Step 1 in the other page, I recommend you download Classic Start Menu. In my website there is a Ninite page under Courses that has a Video that shows how to download Classic Start Menu and more downloads from ninite.com. Once you download Classic Start Menu, next is how to change the Icon in Classic Start Menu.**

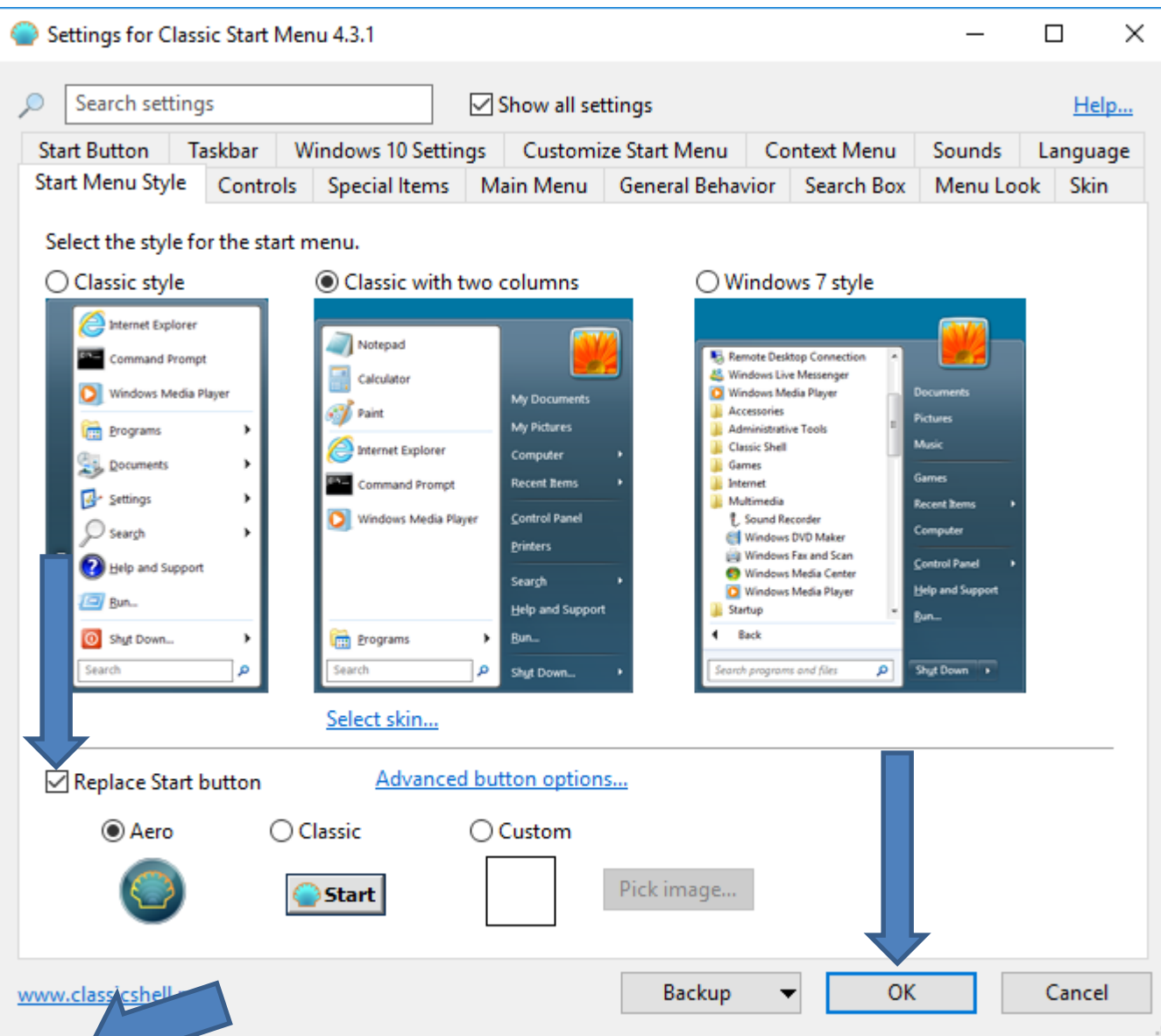
- **When you download Classic Start Menu, the Icon is the same as Windows 10 Start Menu. You right click on it a new window opens with a list and then click on Settings and next is what happens.**

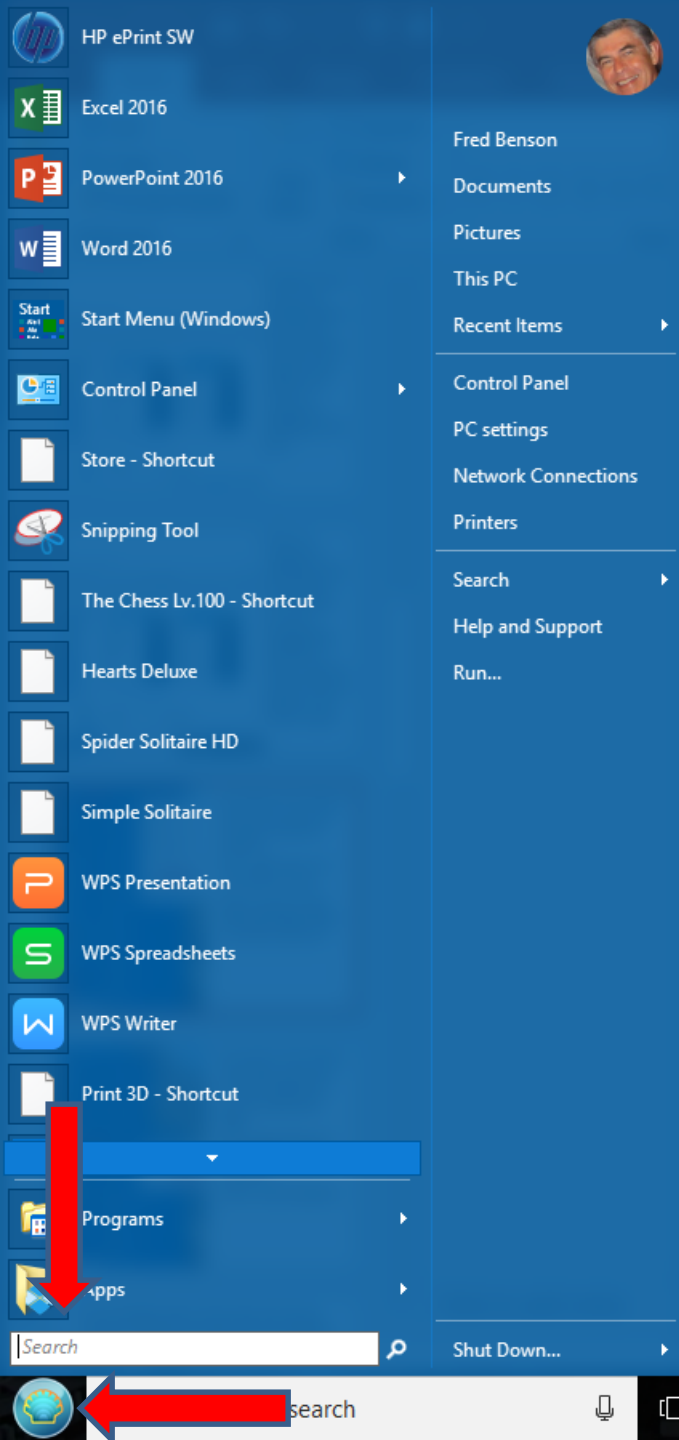


- **Window closes and a new window opens. You click on the box left of Replace Start button and next is a sample of clicking on the box.**

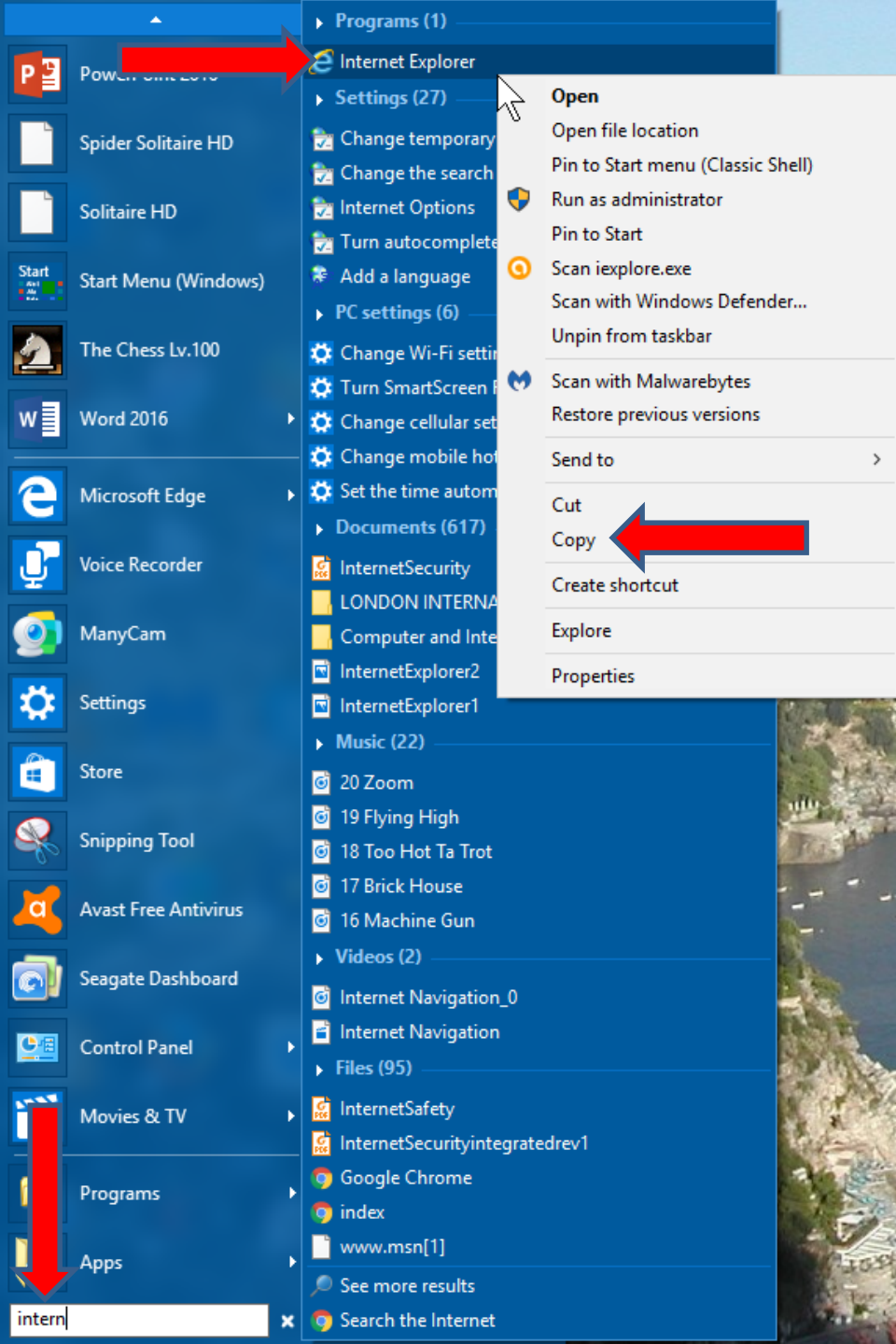


- Here is a sample of clicking on the box and you see the Icon has been changed like Windows 7. Then click on OK to close the window. Next is how to search Internet Explorer and how to copy.

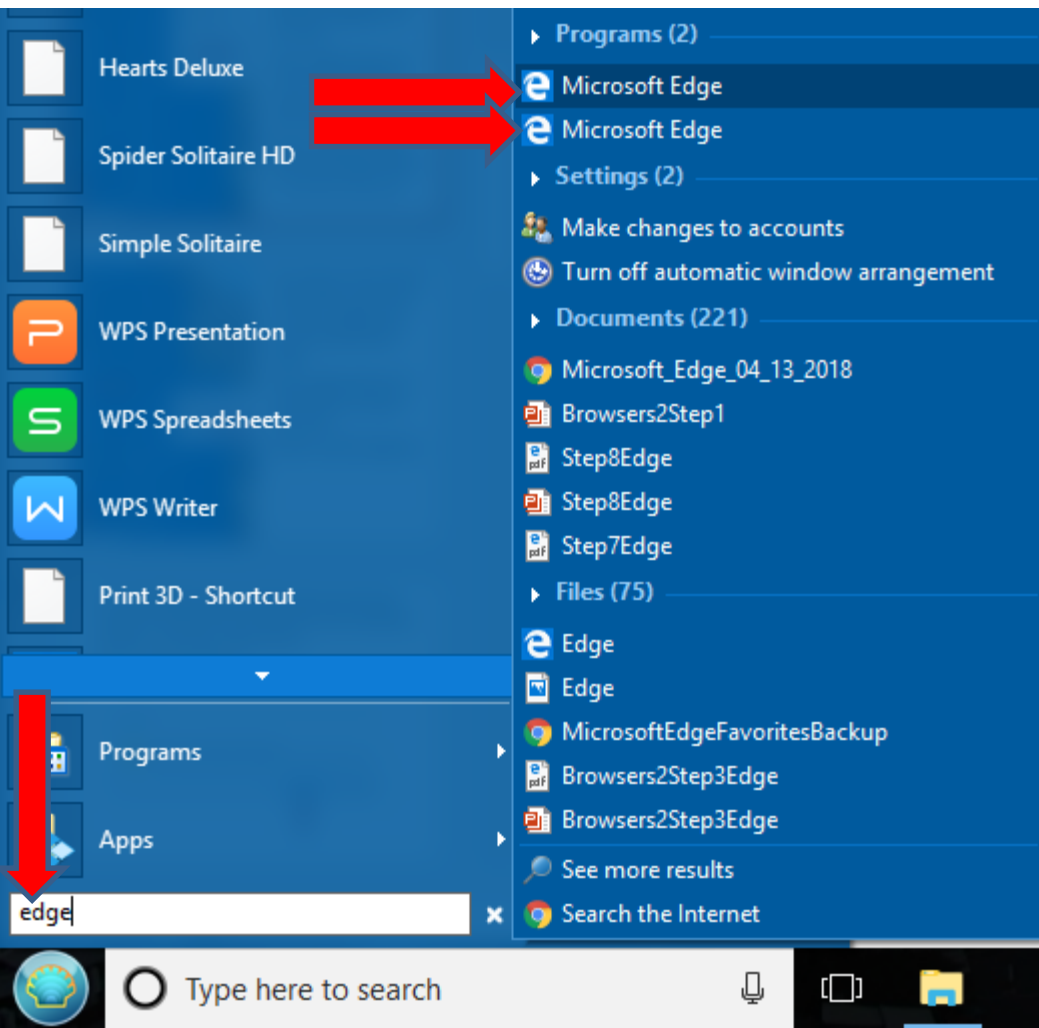




- **When you click on the Classic Start Menu, you see Search and then start to type in Internet Explorer. Next is a sample of start typing Internet Explorer.**

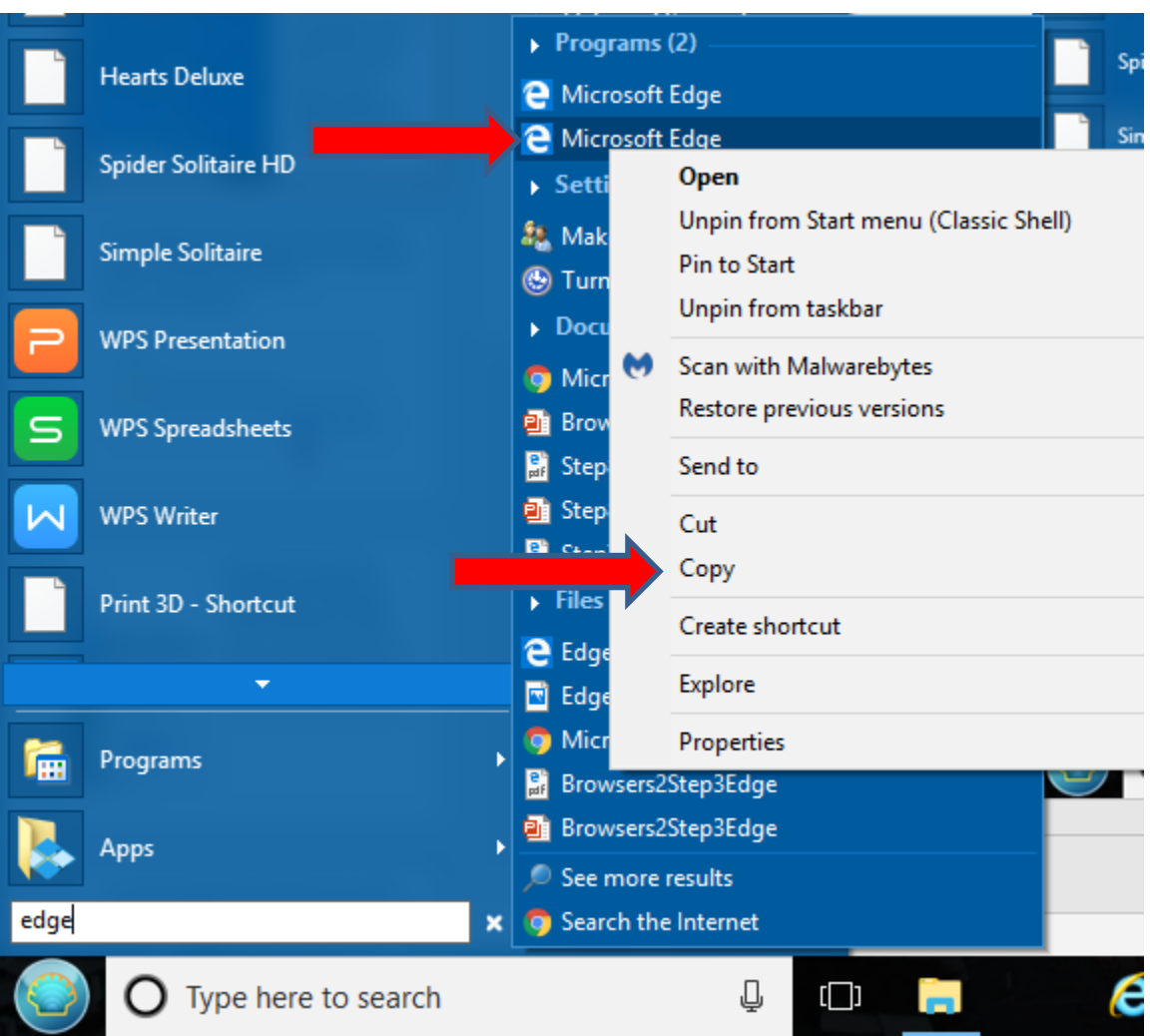


- Here is a sample of start typing Internet Explorer and you see Internet Explorer at the Top.
- Then right click on it and a new window opens with a list and then click on copy.
- You follow the same process to copy Microsoft Edge, which is next.



- Here is a sample of start typing Edge and you see two Microsoft Edge at the Top.
- I tried right click on the first one and didn't not work.
- Next is what happens when I right click on the second one.

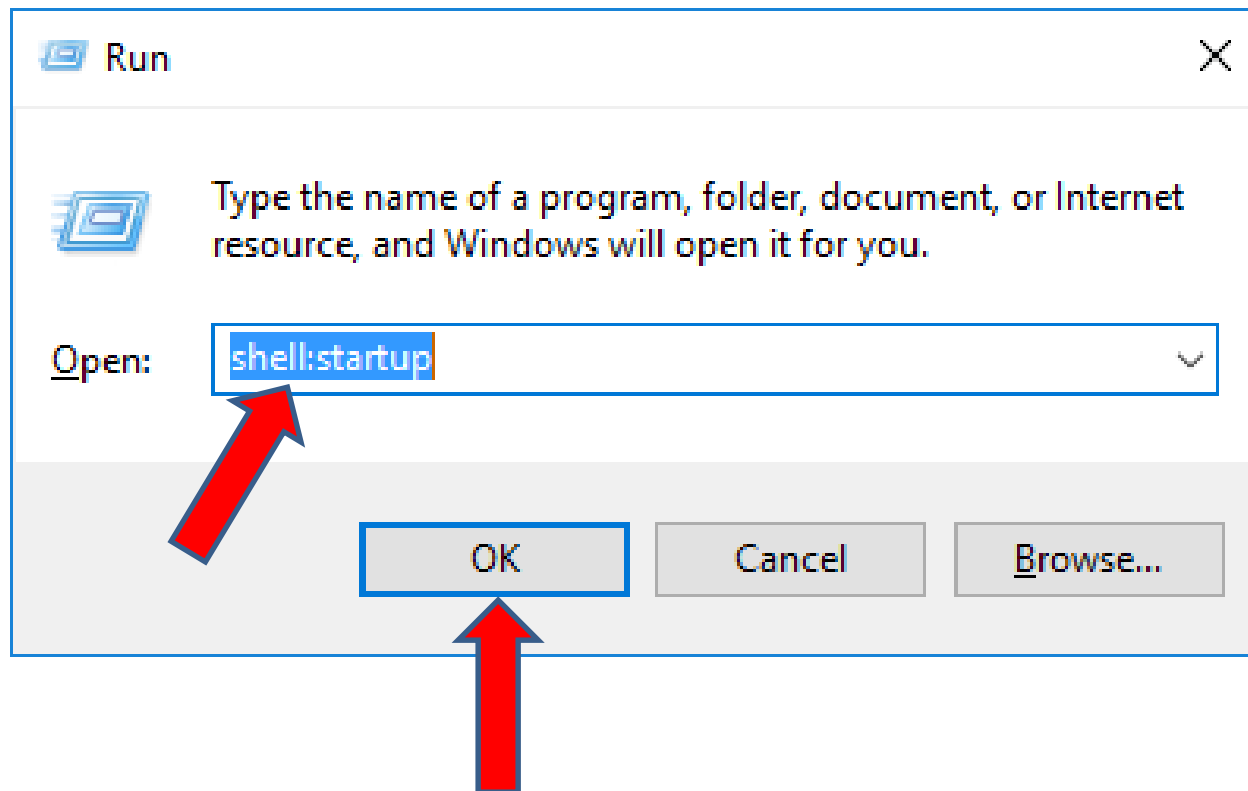
- **When I right click on the second one, the same window opens again and click on Copy. Next is how to go to the other page and then paste later.**



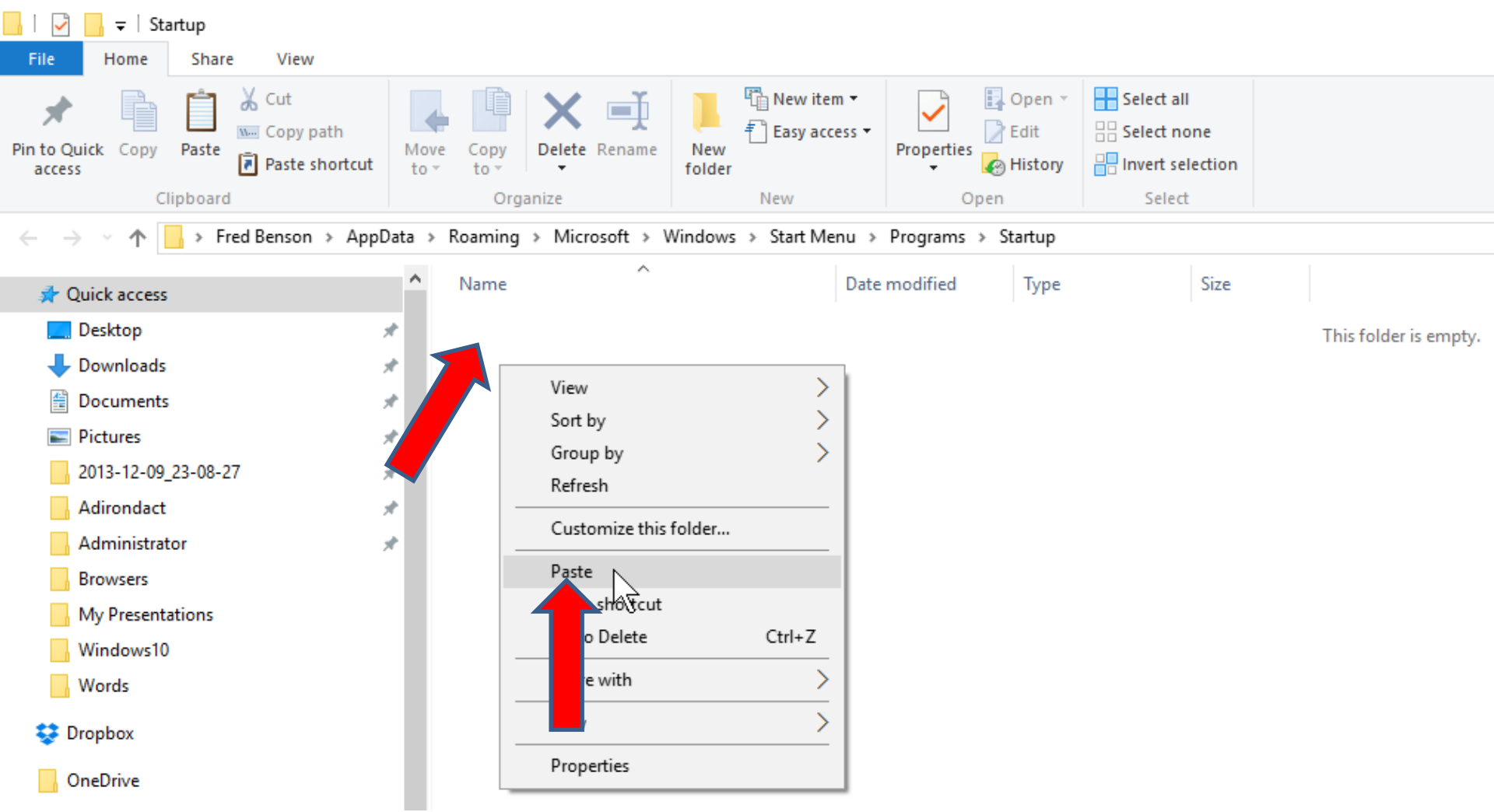
- You click and hold the Window Key and then click on the R Key. Note – your computer may have a different Window Key. Next is what happens.



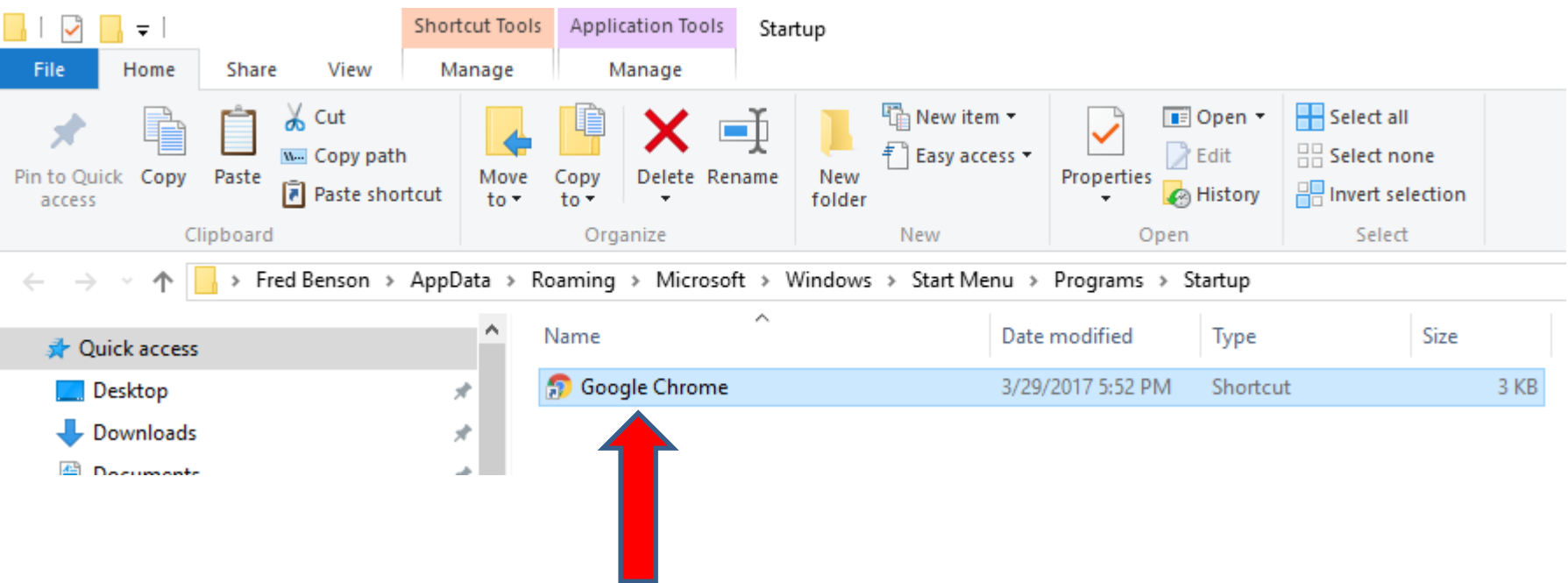
- A new window opens in the lower left and you type in shell:startup and then click on OK. Next is what happens.



- **File explorer opens to the Startup page. You then right click under Name and a new window opens and then click on Paste. Next is a sample.**

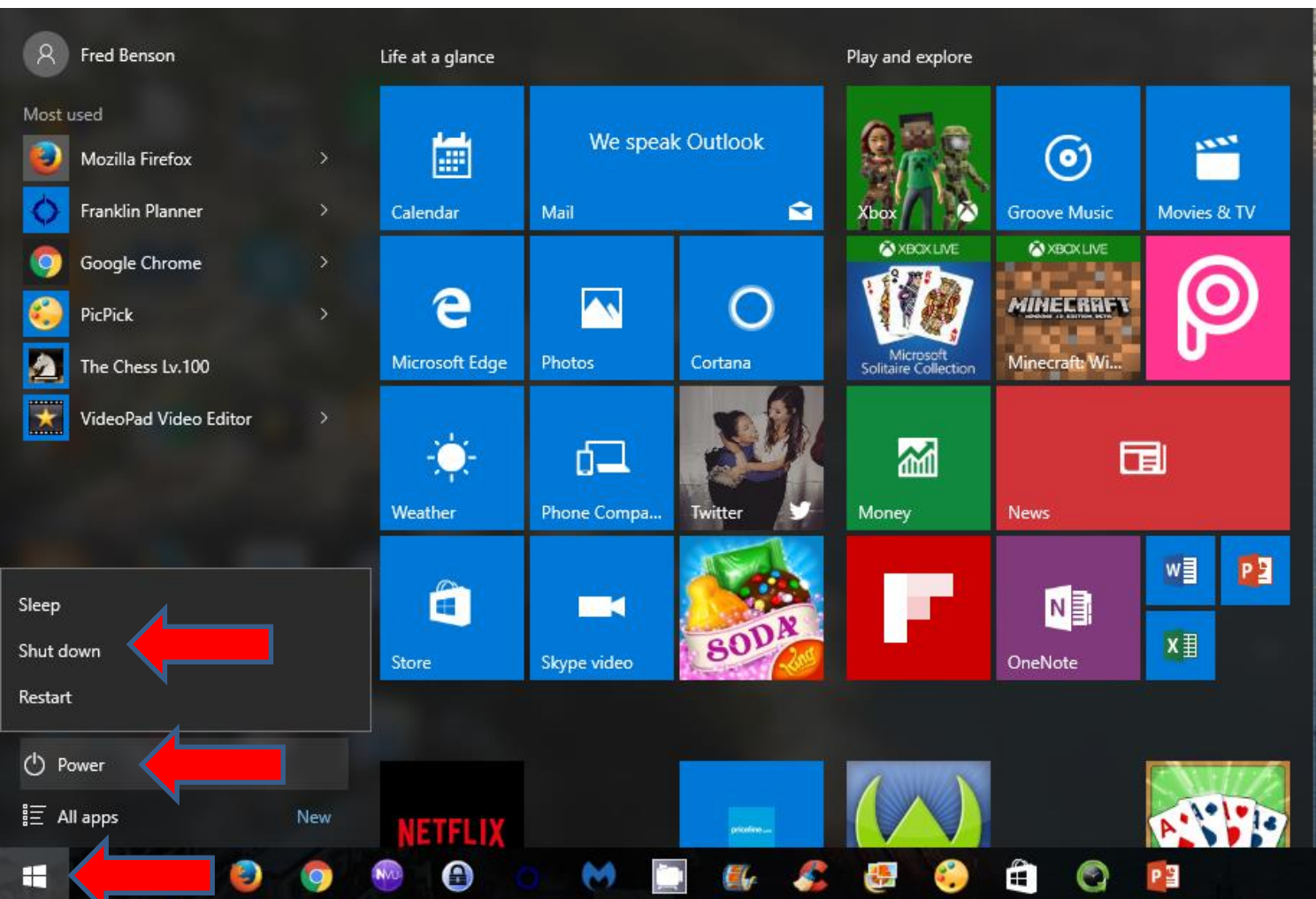


- Here is a sample of Paste of Google Chrome that I did Copy.
- Next, I will explain what happens when you Shut Down and then Turn on your computer.

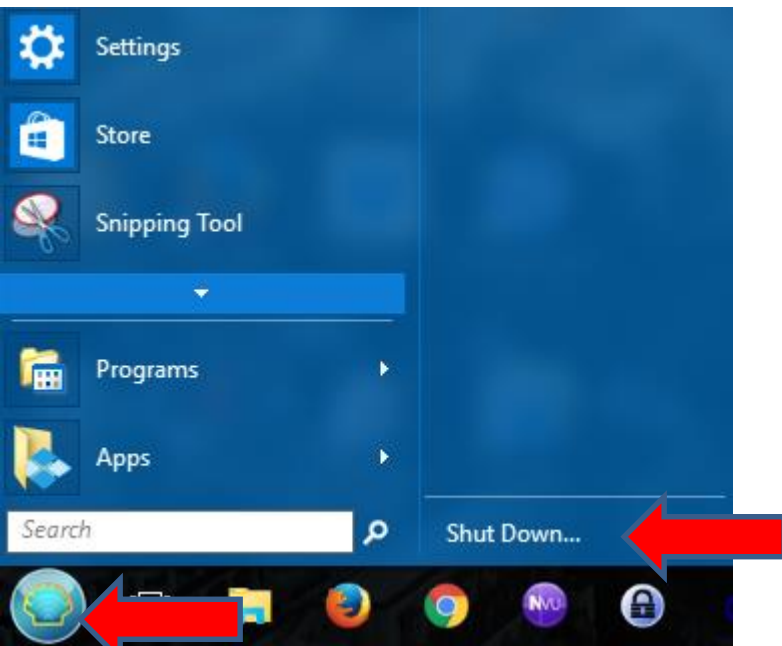


- **When you Shut Down, it takes a little longer because of the Start set up.**
- **When you Turn on your computer, it also takes longer because of the Start set up.**
- **When the desktop opens, it takes about a minute to open the Browser.**
- **When you do it the second time, it goes a little faster when you Shut Down and a little faster when you Turn on. But, when the desktop opens it still takes about a minute to open the Browser.**
- **As I mentioned before, if you don't set up the Browser to automatically open when you turn on your computer and you click the Browser on taskbar, it is much faster. Next is how to Shut Down.**

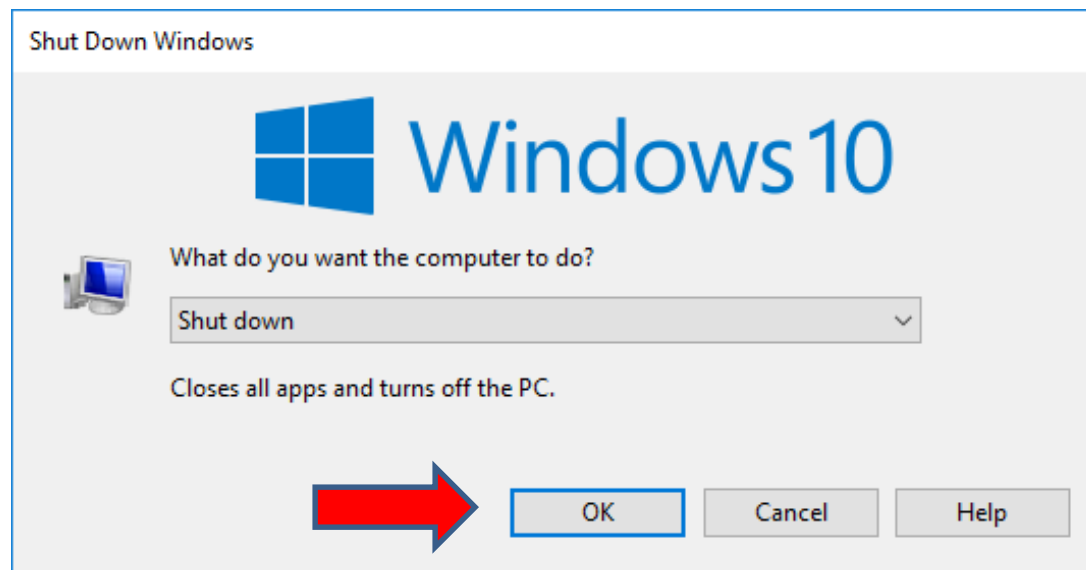
- If you don't have Classic Start Menu, you click on the Start Menu, then click on Power and a new window opens above it and click on Shut down and it starts to Shut down. Next is Classic.



- If you have Classic Start Menu, you click on the Classic Start Menu, and you have two options. If you click on Shut Down, a new window opens which is next. After that is the second option.



- **When click on Shut Down, the Classic Start Menu and this new window opens in the middle. You can click the Enter Key and it starts to Shut Down or just click on OK and it starts to Shut Down. Next is the second option.**



- The second option is you click on the Classic Start Menu, and then hover over Shut Down and a new window opens and you click on Shut Down and it starts to Shut Down.
- This is the End of Step 1.

