

Step 10 – Screen Saver

What is Screen Saver?

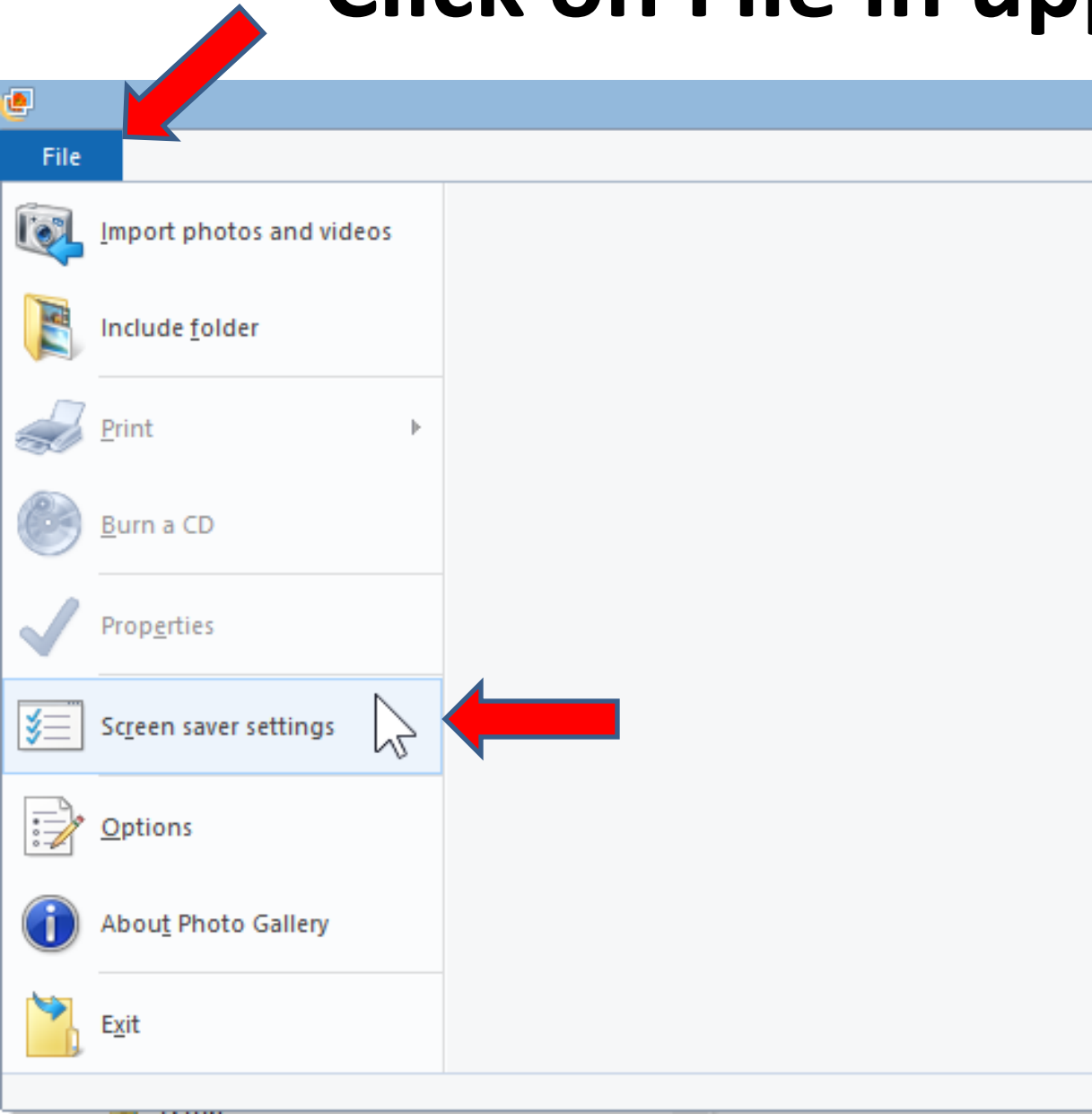
- If you have your computer on and stop using it and not turn it off, you can set up a Screen Saver, which automatically shows a slide show after so many minutes you setup when you don't use the computer.
- Once you see the slide show and don't what to see it, you click on any key. It can go back to where you were before, or you can do a setting that it goes to the log-in screen.
- The reason to do that is it makes it safer if someone tries to use your computer.

Note - Power Settings.

What is Power Settings?

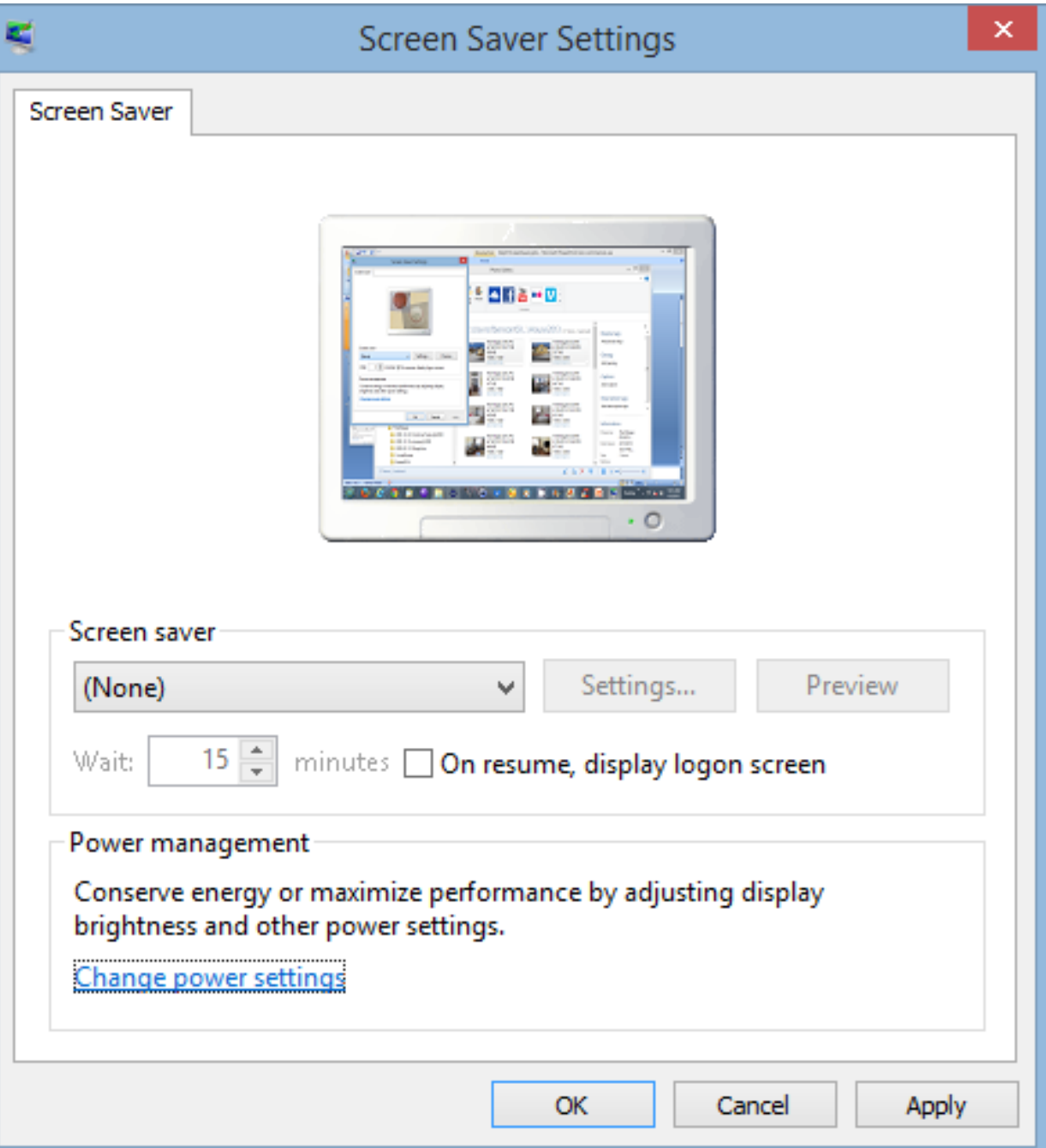
- Before you do Screen saver, the computer has a default Power Setting.**
- Power setting is for your battery and also for safe as well.**
- If you computer does not have your charger, the Screen Saver slideshow will not display.**
- Next is how to set-up Screen Saver.**
- After that is Power Settings.**

Click on File in upper left

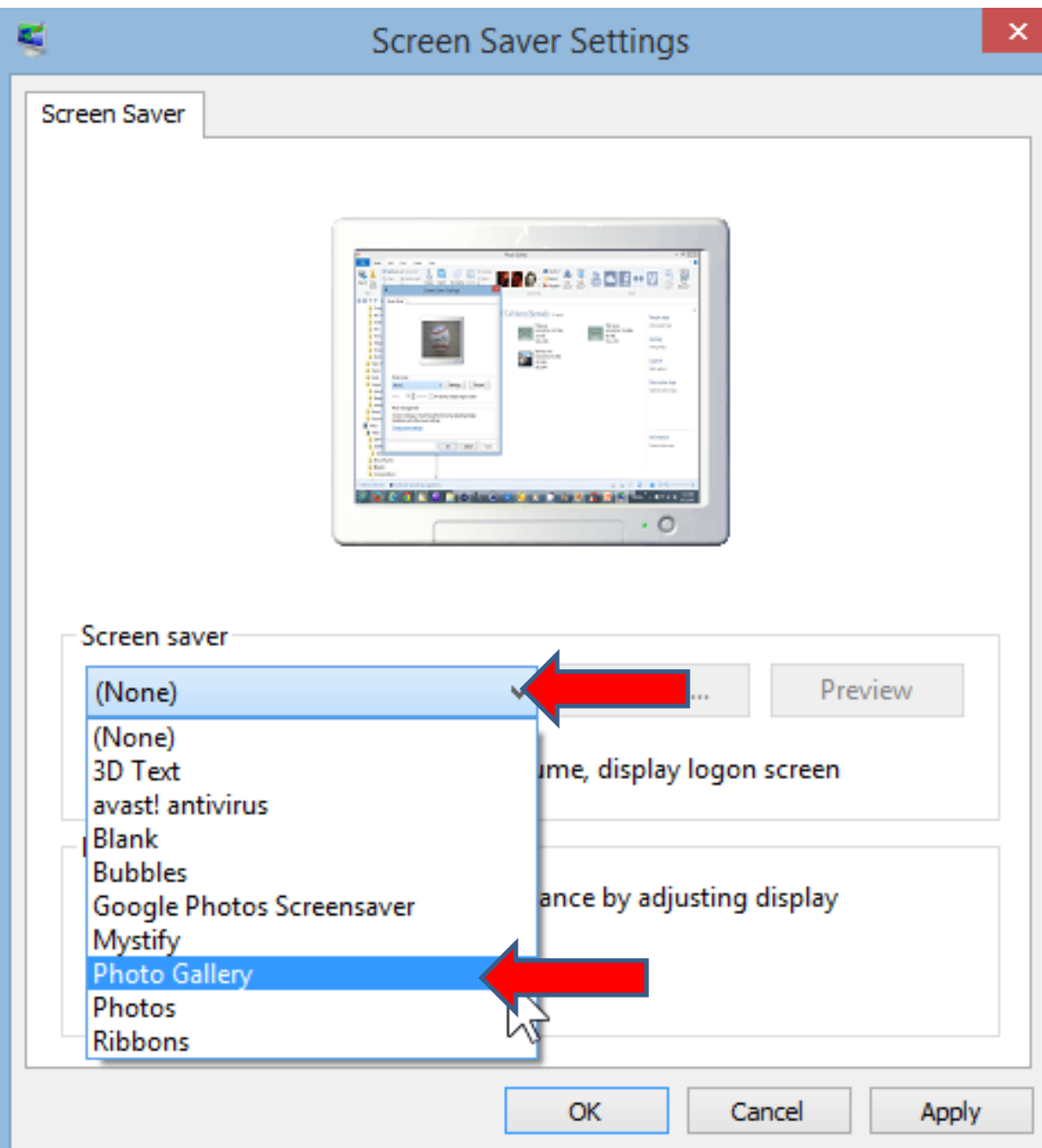


Note – if you are in Windows 7, it may show an icon vs. File

Then click on Screen saver settings



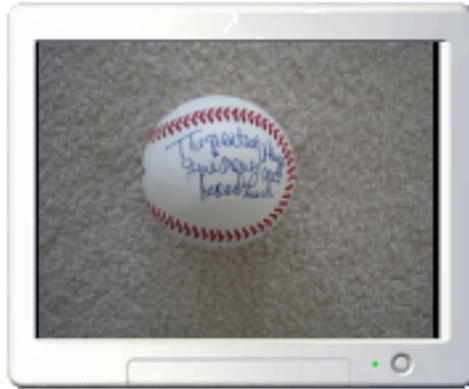
- **New Window Opens and you have a lot of options.**



- Click on Dropdown and click on Photo Gallery.

Screen Saver Settings

Screen Saver



Screen saver

Photo Gallery

Settings...

Preview

Wait: 15 minutes On resume, display logon screen

Power management

Conserve energy or maximize performance by adjusting display brightness and other power settings.

[Change power settings](#)

OK

Cancel

Apply

You see slide show on the top. Next, click on Settings.

Screen Saver Settings

Screen Saver

Photo Gallery Screen Saver Settings

Use all photos and videos from Photo Gallery

With this descriptive tag:

Bibione

With this rating or higher:

Any rating

Don't show items tagged:

Use photos and videos from:

C:\Users\fbenson...\2009-04-01 ebay baseball basketball

Browse...

Use this theme:

Classic

Slide show speed:

Medium

Shuffle contents

Save

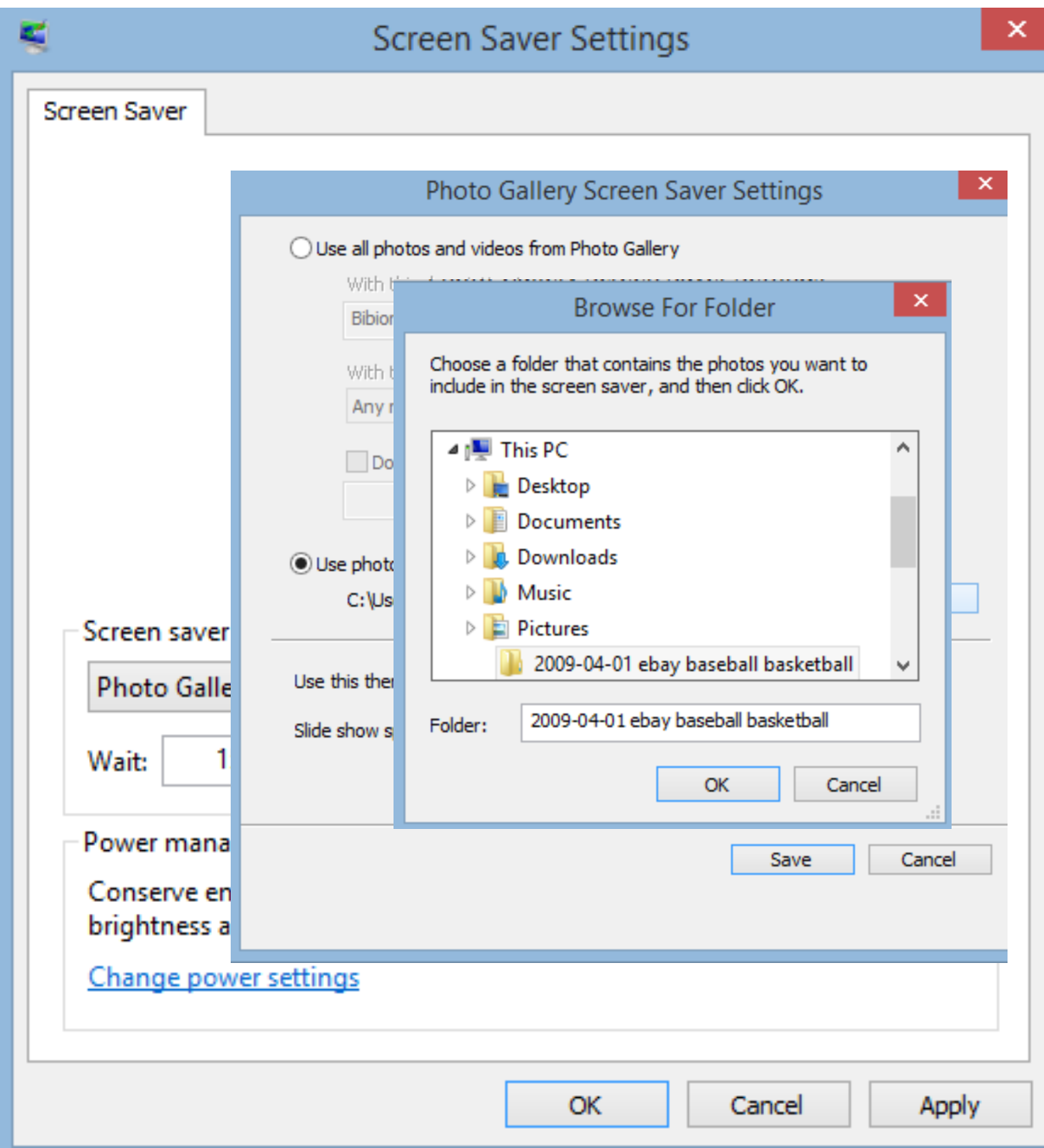
Cancel

OK

Cancel

Apply

Click on Browse to find the photos you want for the slide show.



A new window opens and find the folder and click on OK. Next is a sample.

Screen Saver Settings

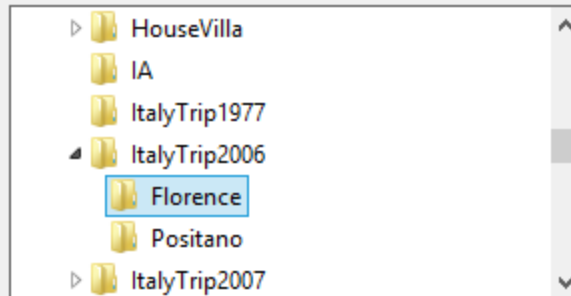
Screen Saver

Photo Gallery Screen Saver Settings

Use

Browse For Folder

Choose a folder that contains the photos you want to include in the screen saver, and then click OK.



Folder: Florence

OK

Cancel

Shuffle contents

Save

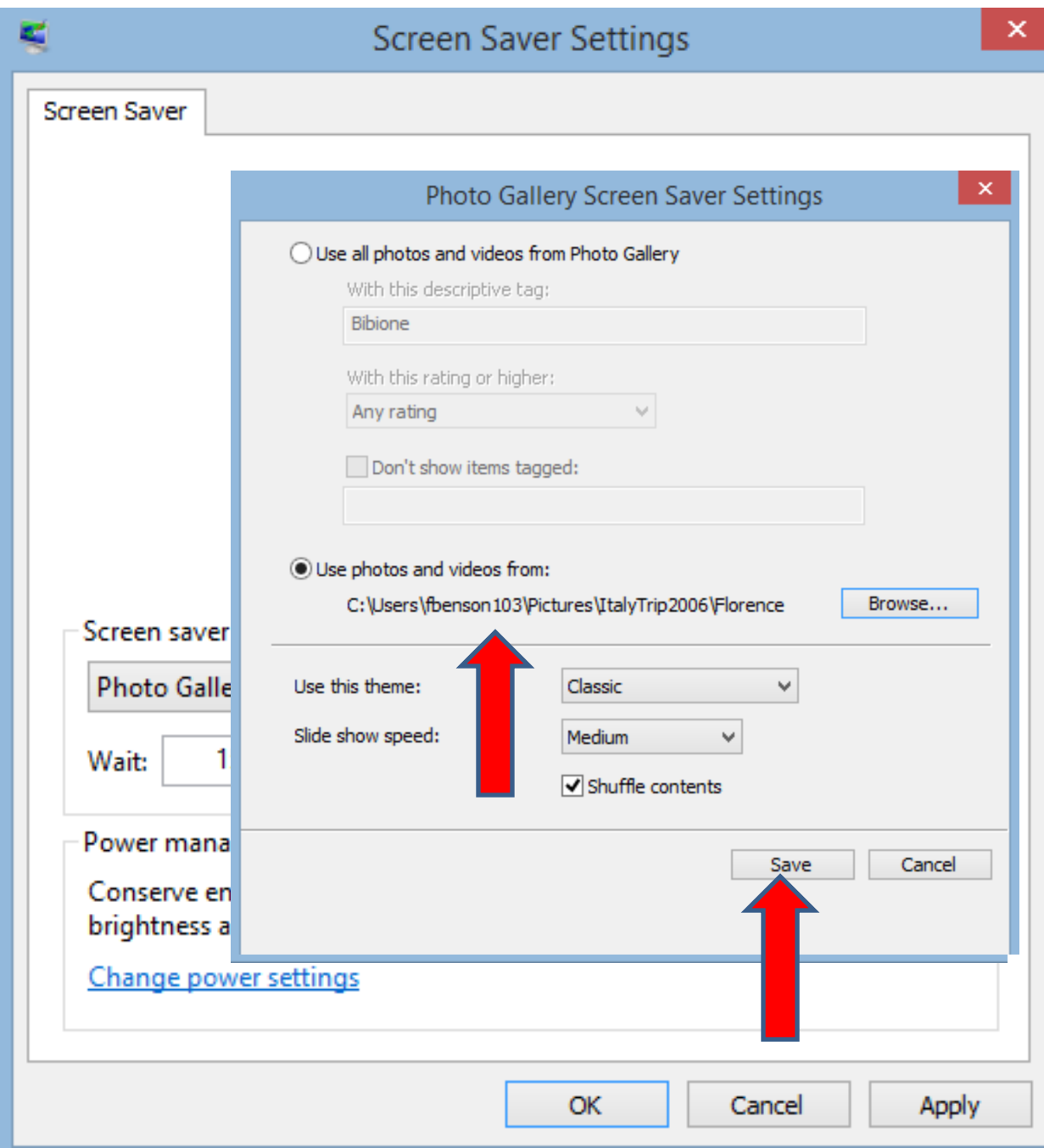
Cancel

OK

Cancel

Apply

• Find the folder, like Florence and click on OK.



That window closes and you see Florence folder and click on Save. Next, you can change the theme and speed.

Screen Saver Settings

Screen Saver

Photo Gallery Screen Saver Settings

Use all photos and videos from Photo Gallery

With this descriptive tag:

Bibione

With this rating or higher:

Any rating

Don't show items tagged:

Use photos and videos from:

C:\Users\fbenson103\Pictures\ItalyTrip\Florence

Browse...

Use this theme:

Slide show speed:

- Classic
- Classic
- Fade
- Pan and zoom
- Black and white
- Sepia
- Album
- Collage
- Frame
- Glass
- Spin
- Stack
- Travel
- Random

Screen saver

Photo Galle

Wait: 1

Power mana

Conserve en
brightness a

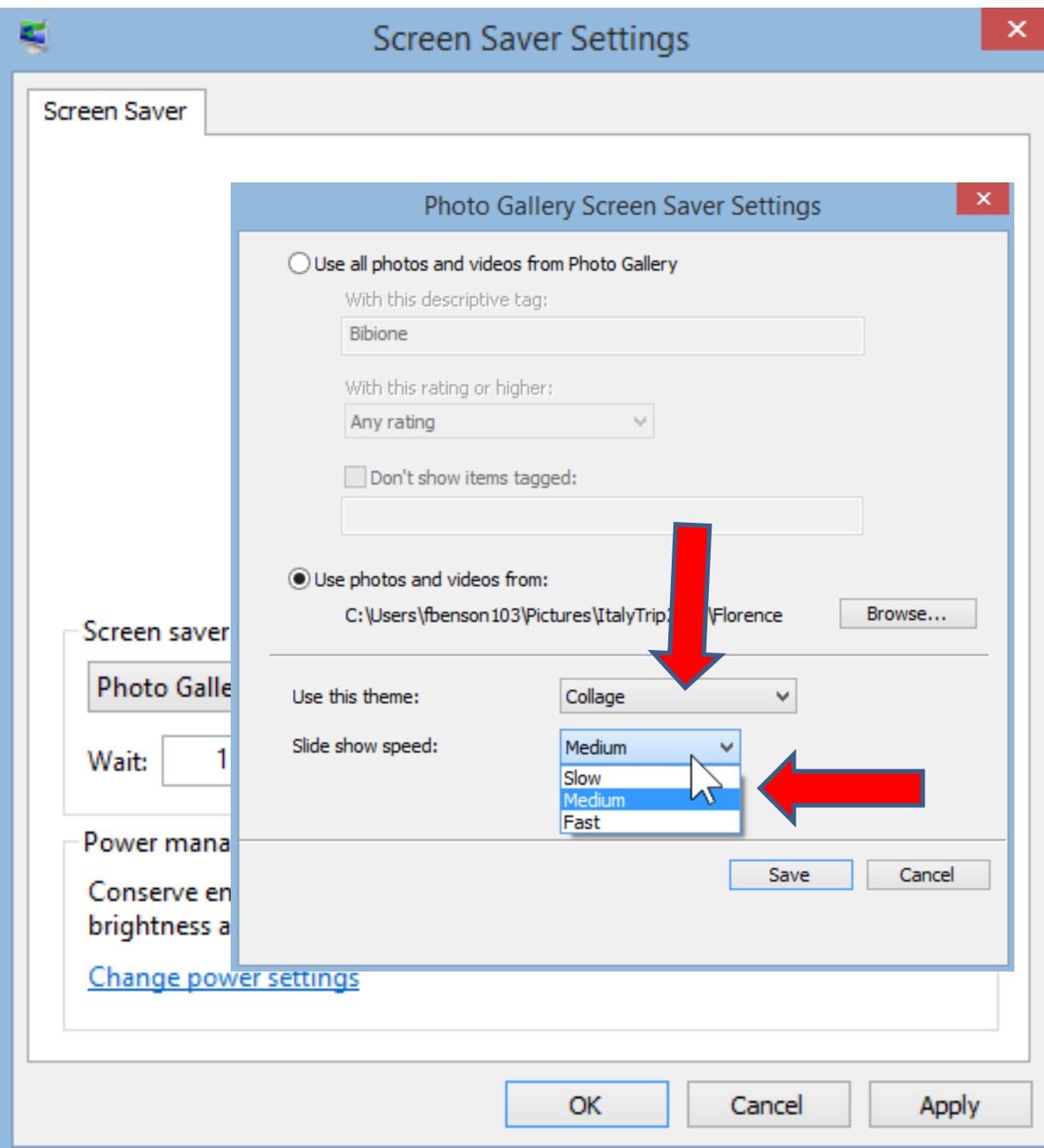
[Change pow](#)

OK

Cancel

Apply

Click on the use the theme area and you see a list of themes and click on one like Collage. Next is speed.



You then see Collage. Then click on like Medium and you see 3 options. You can click on Slow or Fast or keep it Medium.

Screen Saver Settings

Screen Saver

Photo Gallery Screen Saver Settings

Use all photos and videos from Photo Gallery

With this descriptive tag:

Bibione

With this rating or higher:

Any rating

Don't show items tagged:

Use photos and videos from:

C:\Users\fbenson103\Pictures\ItalyTrip2006\Florence

Browse...

Use this theme:

Collage

Slide show speed:

Fast

Shuffle contents

Save

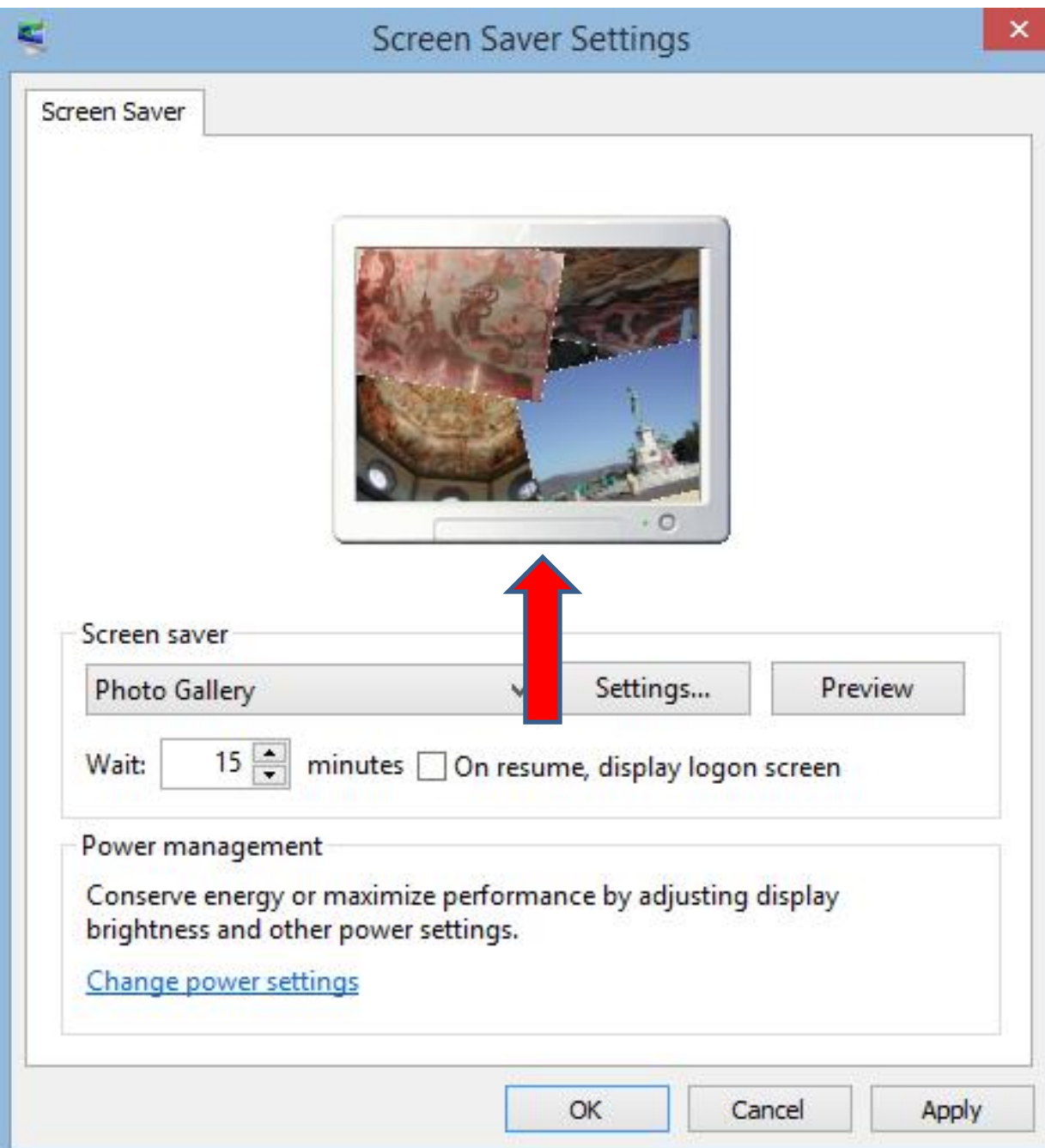
Cancel

OK

Cancel

Apply

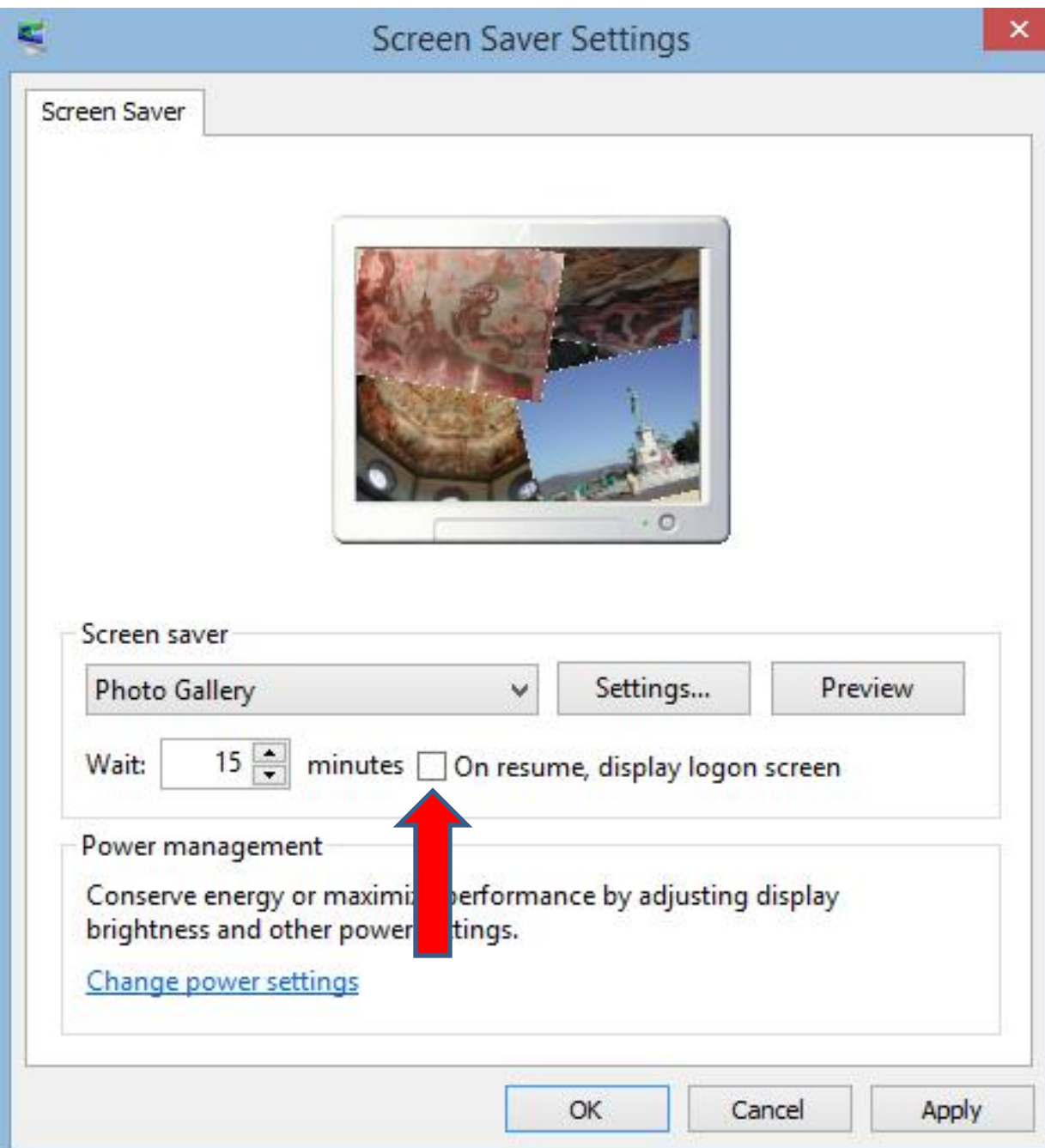
You see Fast.
Then click on
Save.



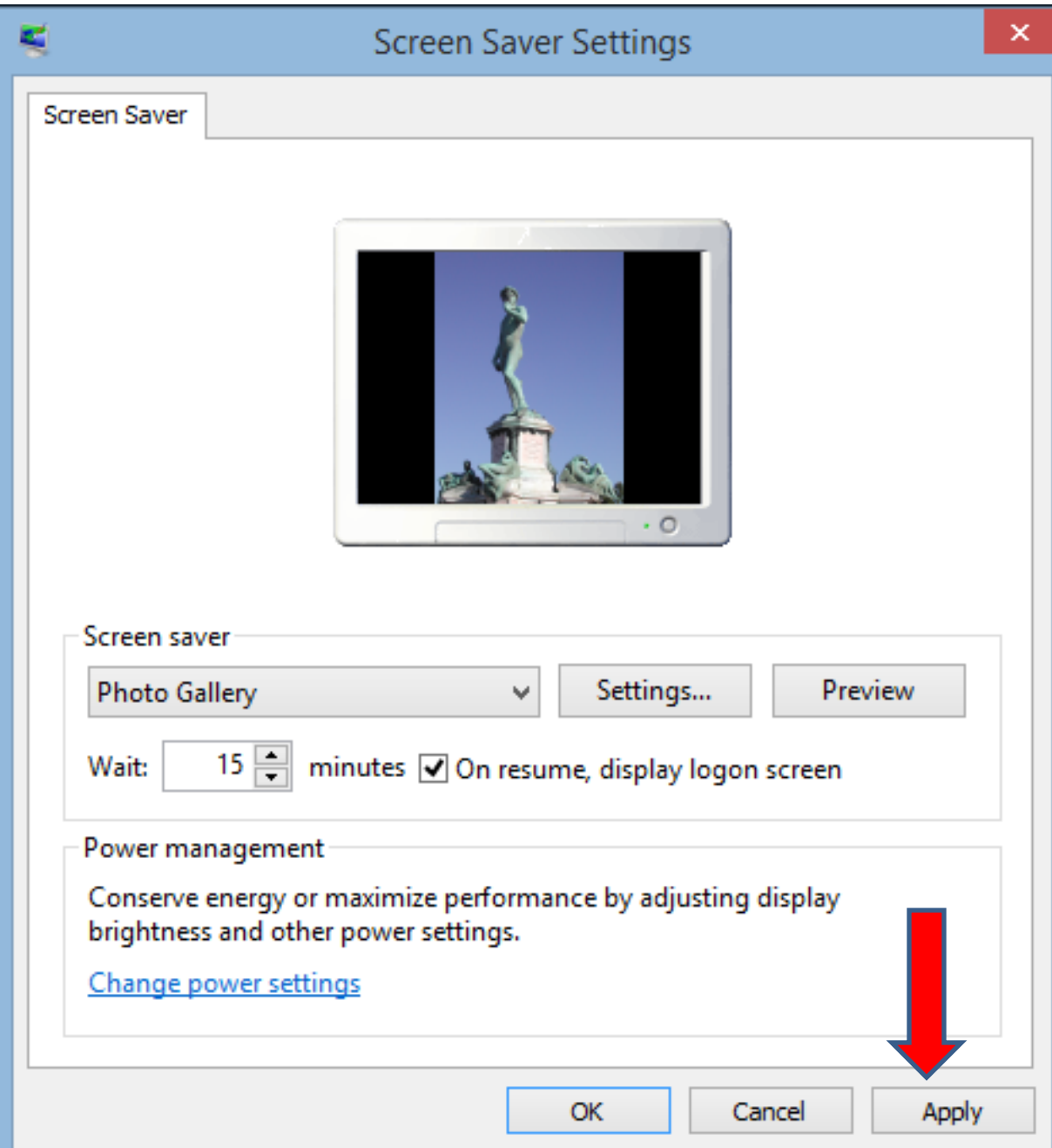
- You then see new Photos and new Theme and new speed.
- Next, you can change the Wait time if you want. Next is details about Wait.

What is Wait.

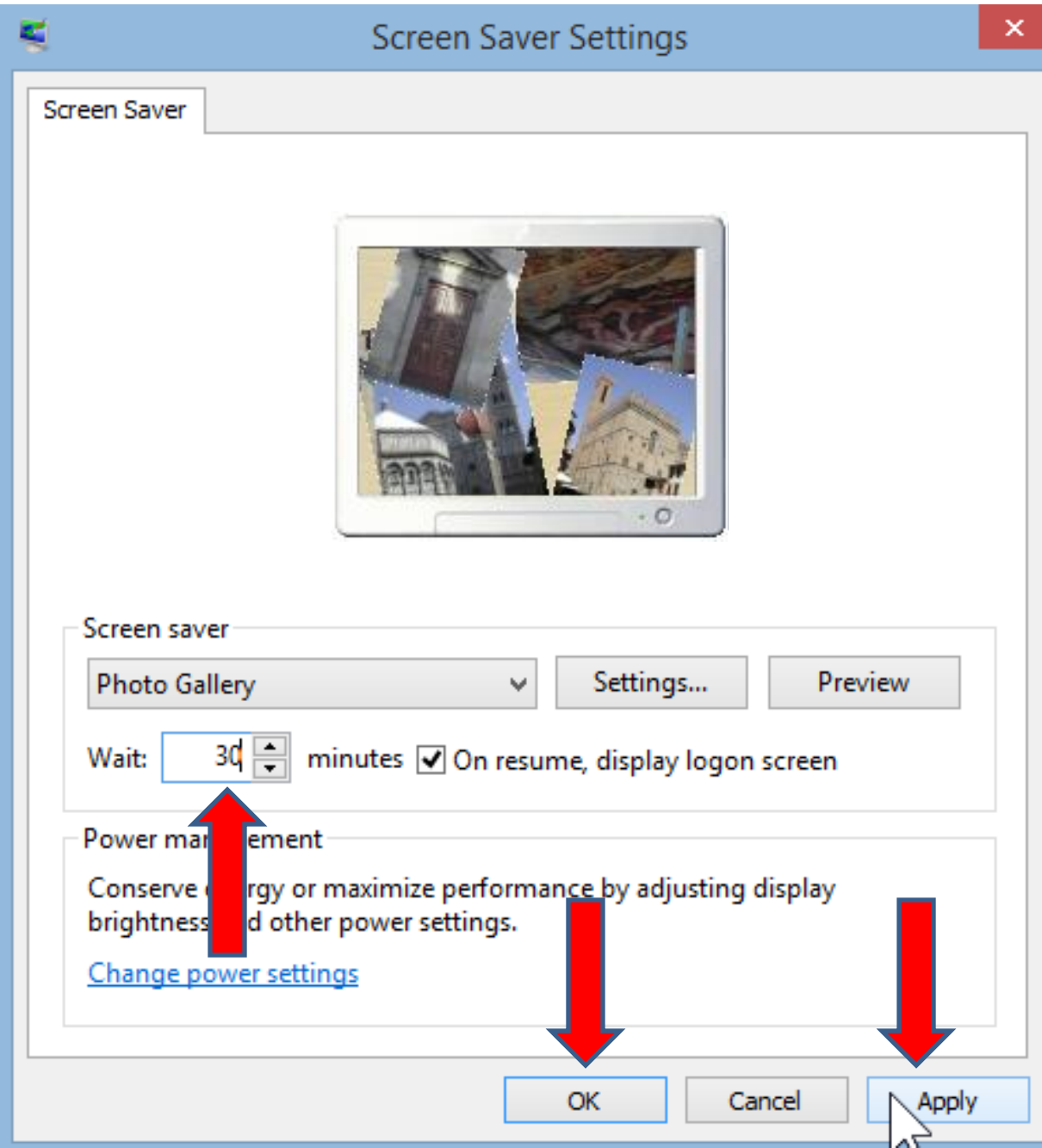
- **When you don't do anything on the computer, like touching anything, mouse, etc., the Screen Saver waits, like 15 minutes. After the 15 minutes, the slide show starts in a full Screen. I will show you that soon.**
- **Next, is to set when you Resume, display logon screen, to make it safe.**



- Click on the box next to minutes.
- Next is sample.



- **Note – you see the slide show keeps playing. That’s why you see it different.**
- **Then click on Apply.**
- **Next, you could change minutes**



- You can do up and down or just type in the minutes, like 30.
- Then click on Apply again. And then click on OK.
- Next is a full screen when you don't do anything for 30 minutes.

- You see the slide show in a full screen. When you click on any key, it goes to the Logon screen, which is next.



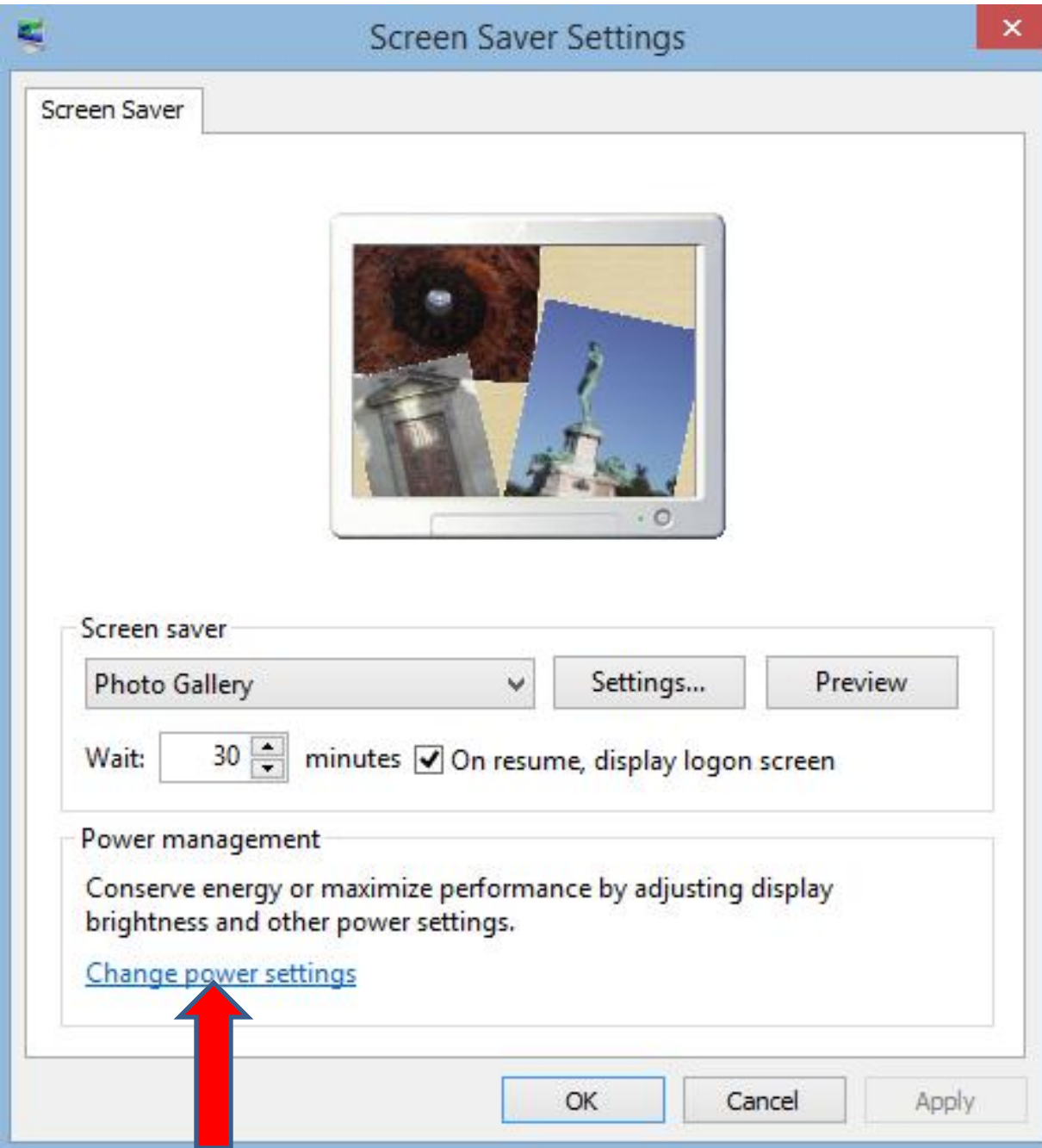
- You see logon screen. Next is power settings.



Fred Benson
pac_fab103@hotmail.com
Locked

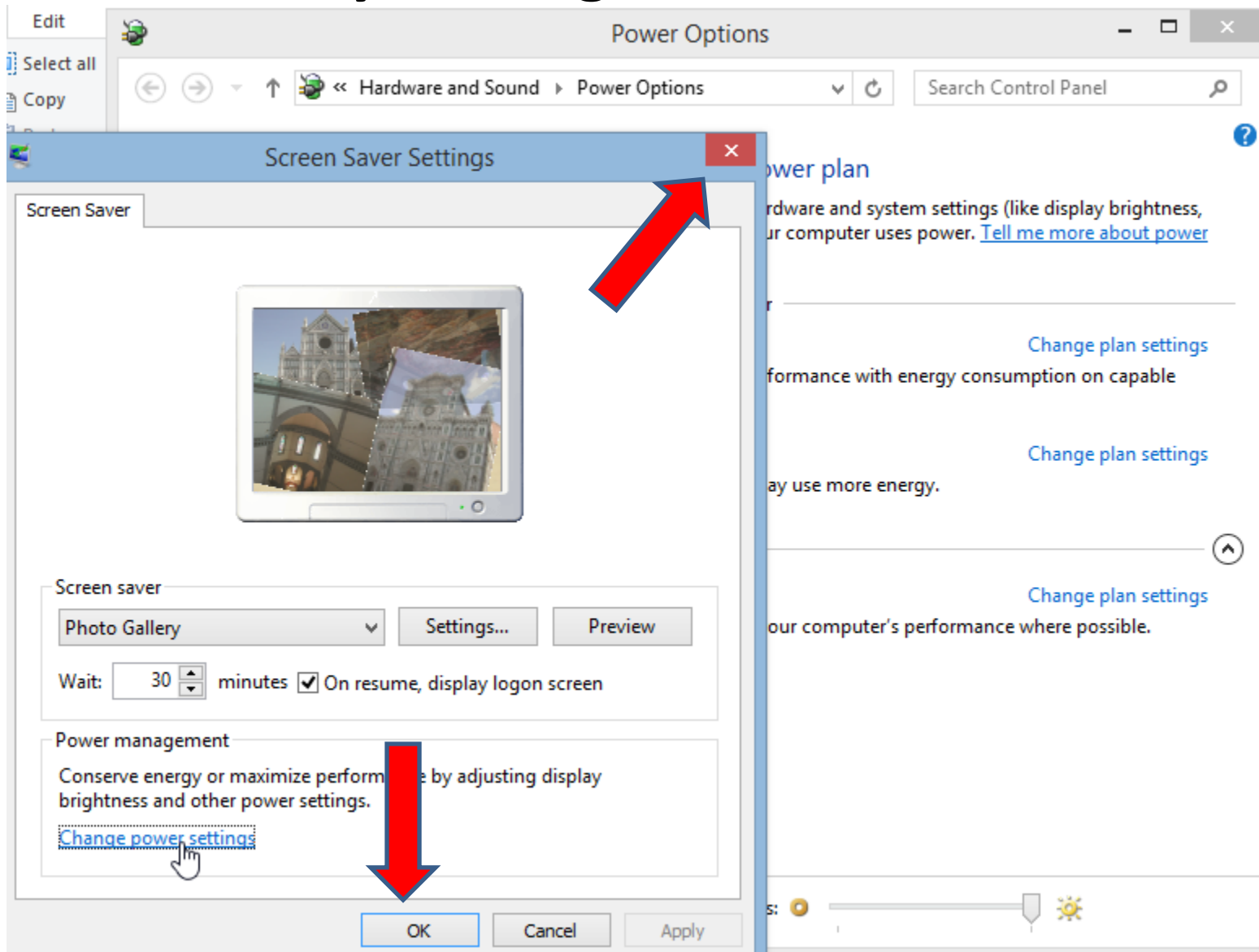
[Sign-in options](#)



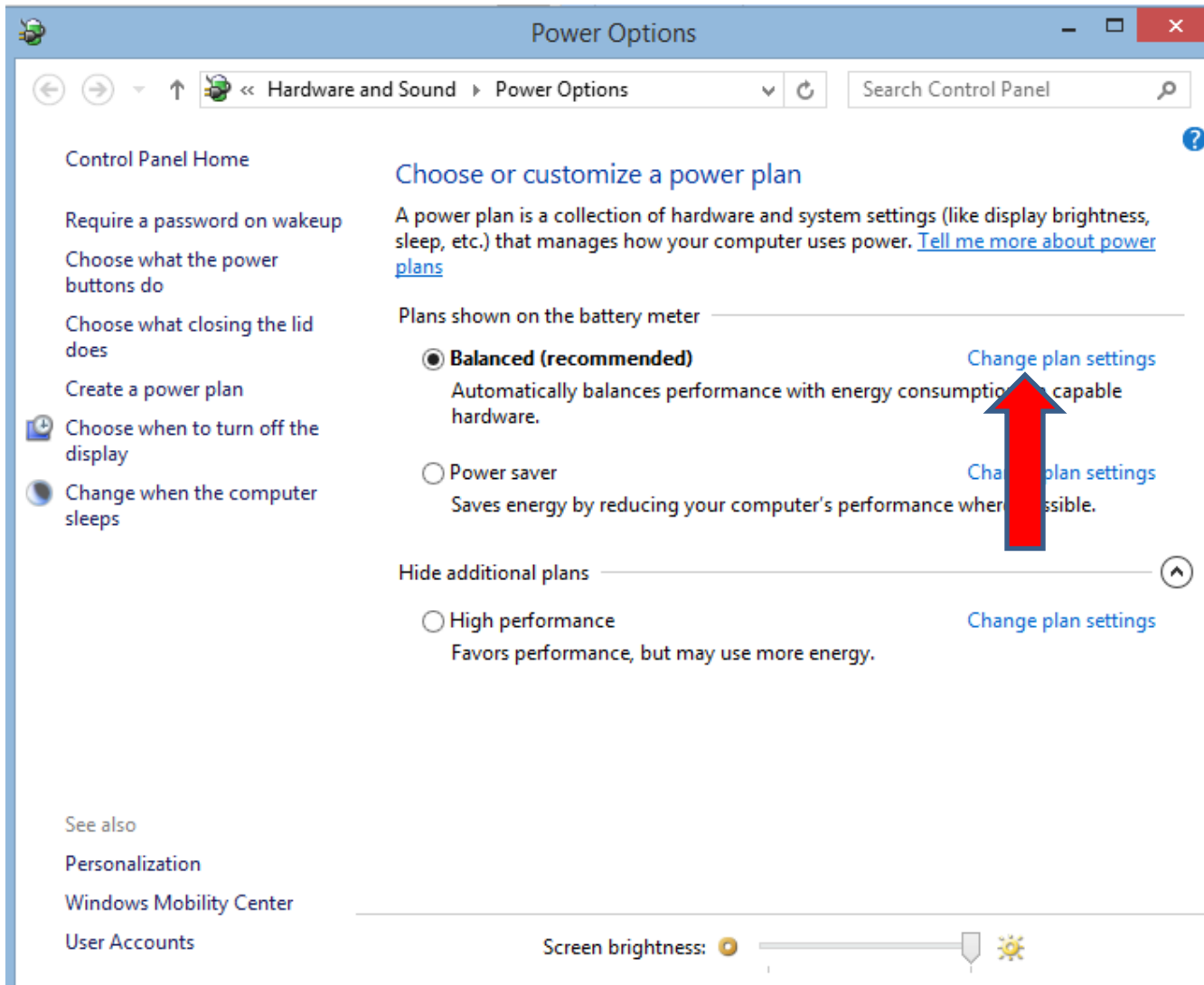


- In Screen Saver Settings, click on Change power settings.

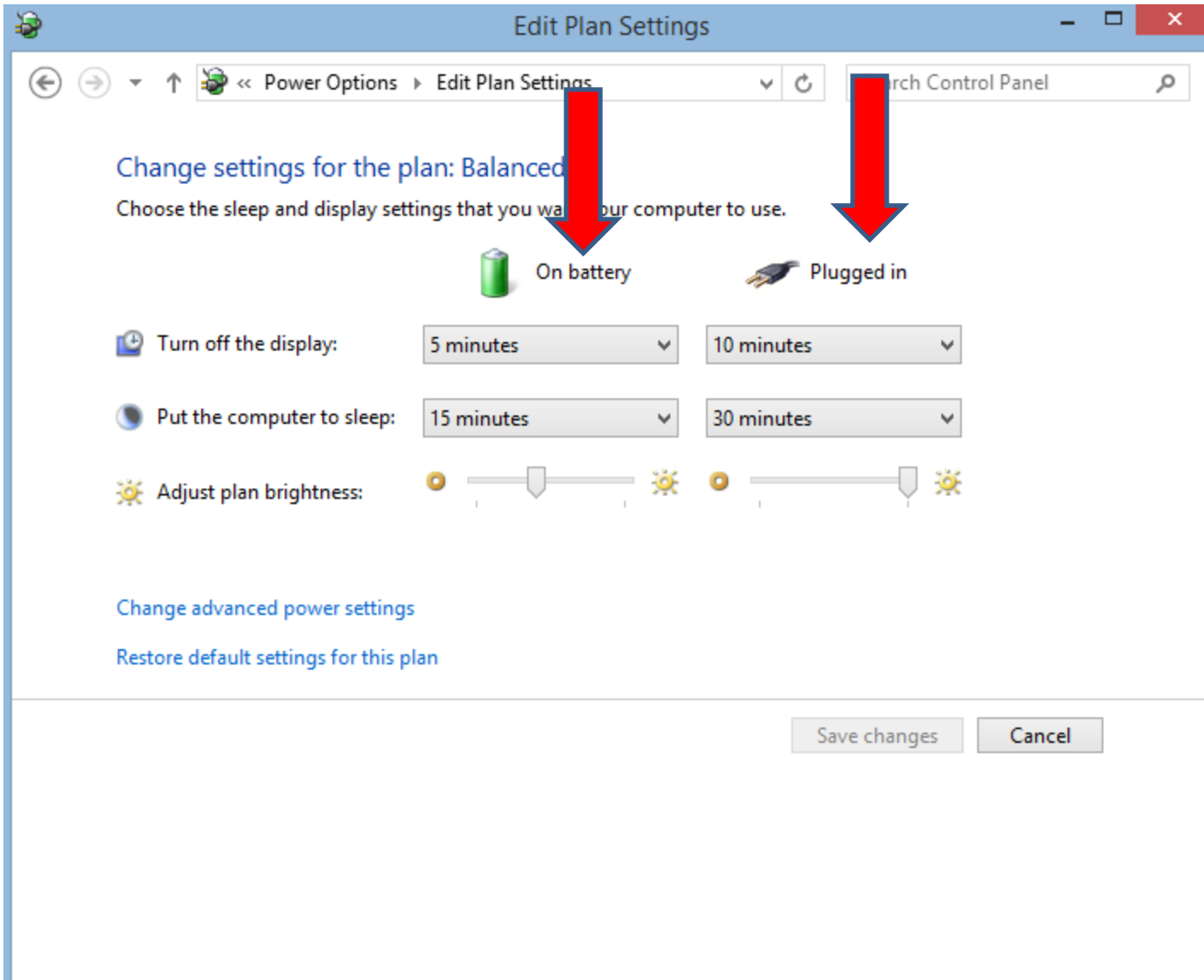
- A new window opens behind Screen Saver. You can close it by clicking on OK or X.



- You then see Power Options. Click on Change plan settings.



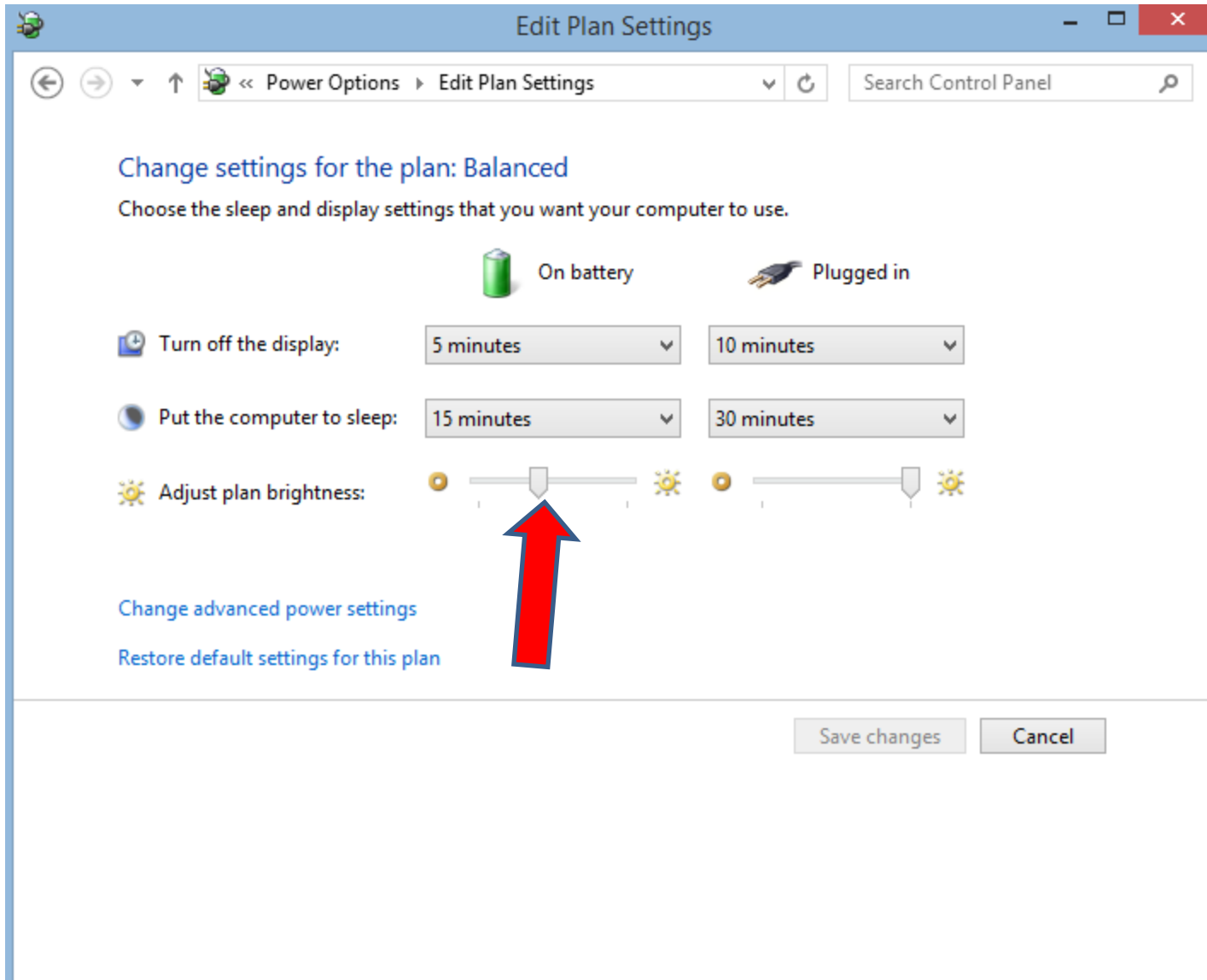
- **New window opens and it shows On Battery without Plugged in Battery and Plugged in.**



What are the settings?

- Plugged in is when you are charging your Battery. On Battery is when you are not charging it.
- Turn off display is when you stop working on the computer, it shows a black screen. You can click on any key to go back to the previous screen.
- Put the computer on sleep. Sleep is different than shut down. It saves energy, but doesn't quite turn the PC off. In Sleep mode, Windows saves what you're doing and then puts the computer to sleep — meaning into a special low-power mode. The computer isn't exactly off, and it restores itself quickly, which makes Sleep mode more effective as a way to shut down the computer. So, when you stop working on computer for the minutes set, it goes to sleep mode, which is a black screen like Turn off display. You can click on any key to go back to the previous screen, but sometimes it takes you to Logon.
- Next is brightness.

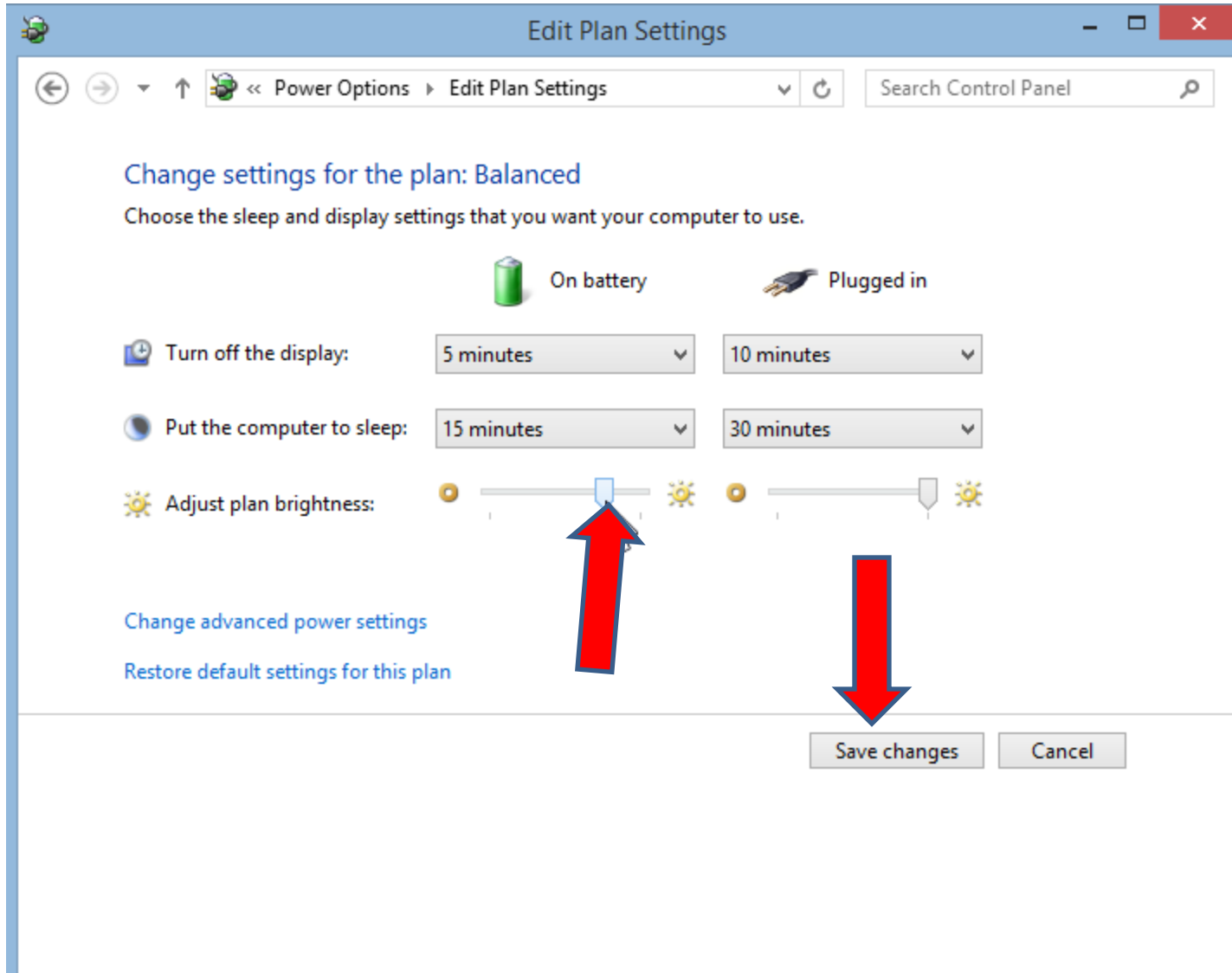
- **When you charger is not plugged in, the default brightness is half. Next is details.**



What is Brightness?

- **When your charger is in, the default is high Brightness. When you unplug it, it is not Bright and may be too dark. The reason it does that to help keep the battery. But, you can change that setting by just dragging it to the right and then click on Save Settings, which is next.**

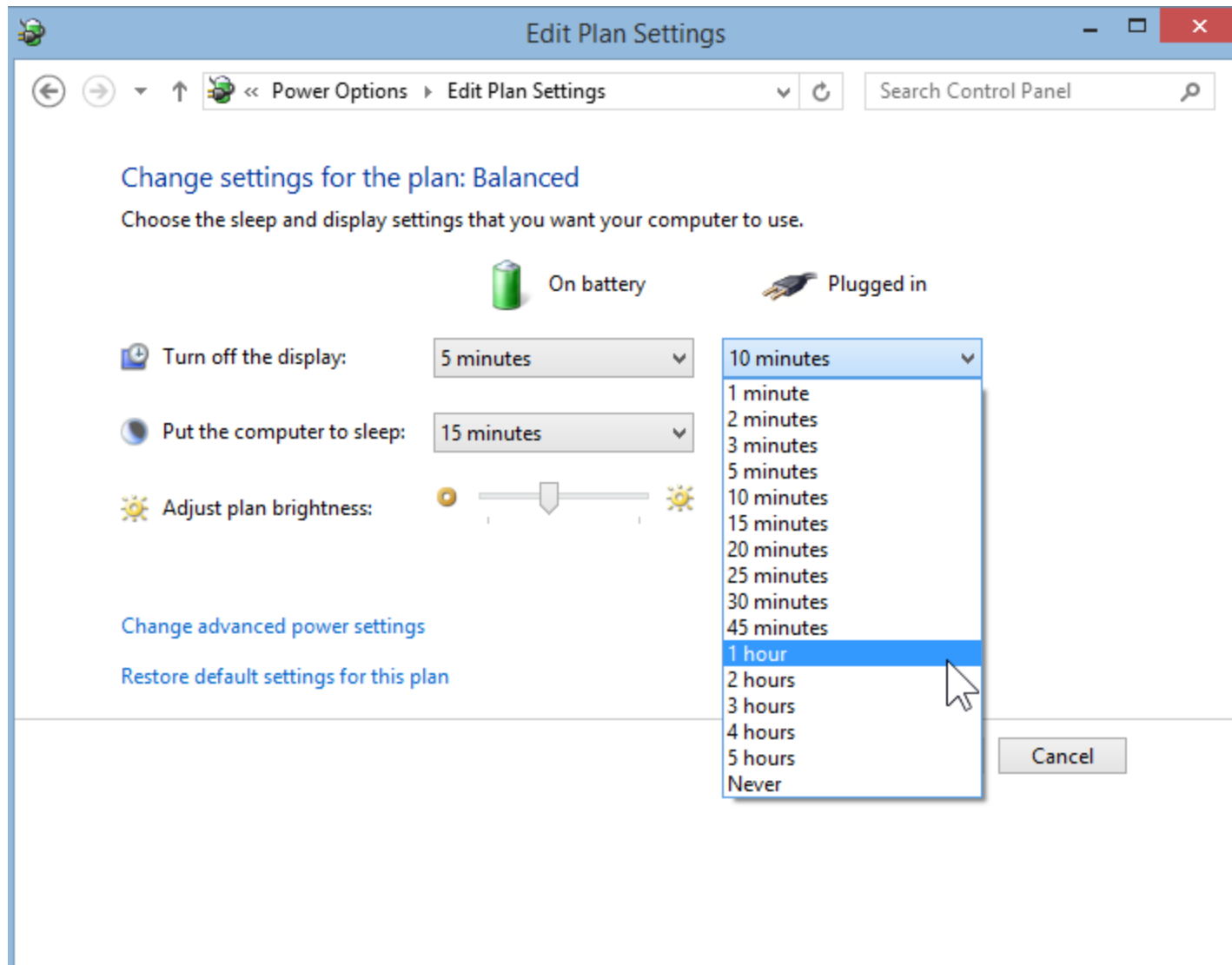
- You see it brighter when you unplug your charger.
- Next is Plugged in settings.



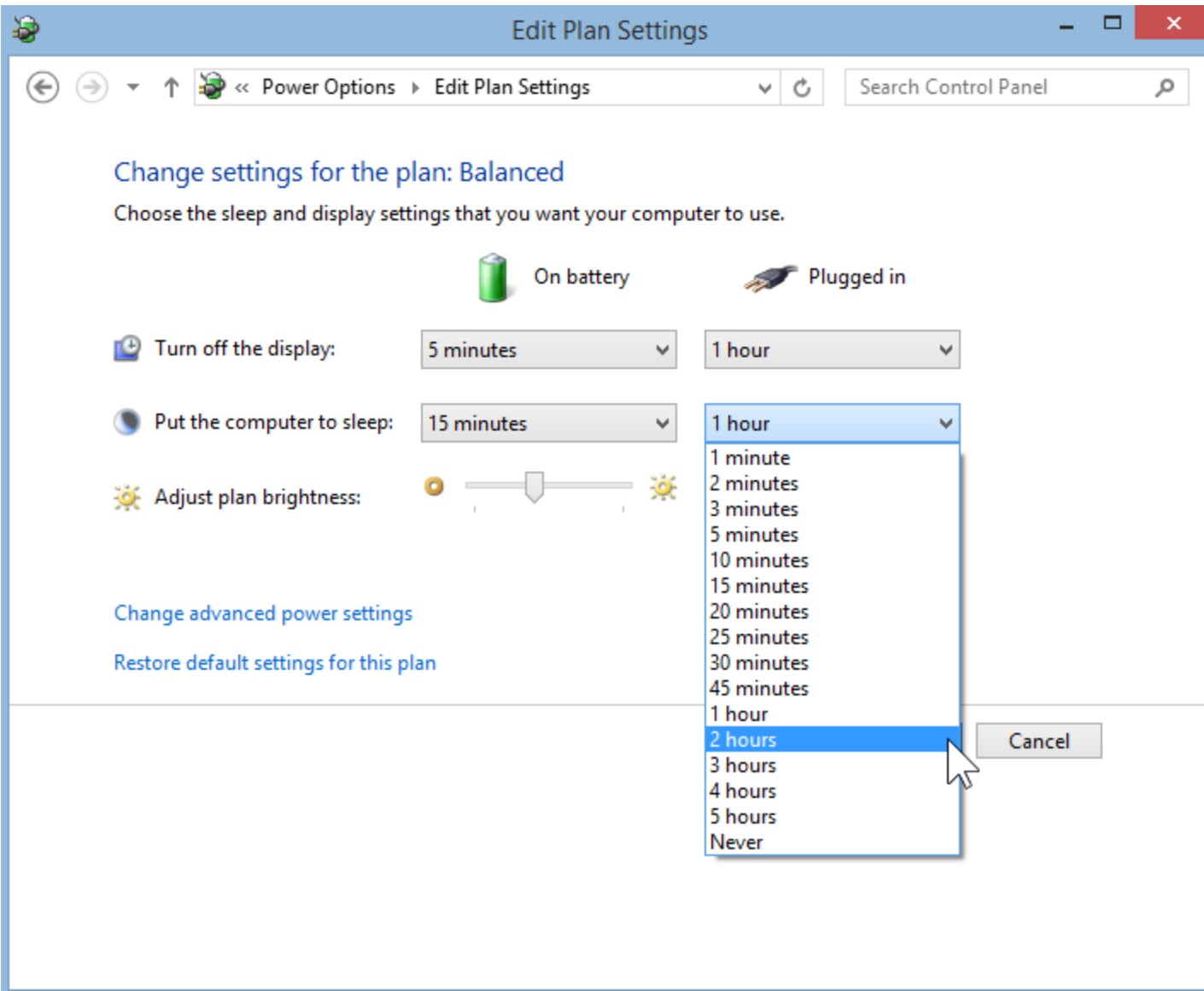
Plugged in Settings?

- **The default is 10 minutes for turn off display and 30 minutes for Put the computer to sleep.**
- **Because the charger is plugged in, I recommend changing it to 1 hour and 2 hours. Next is how to do it.**

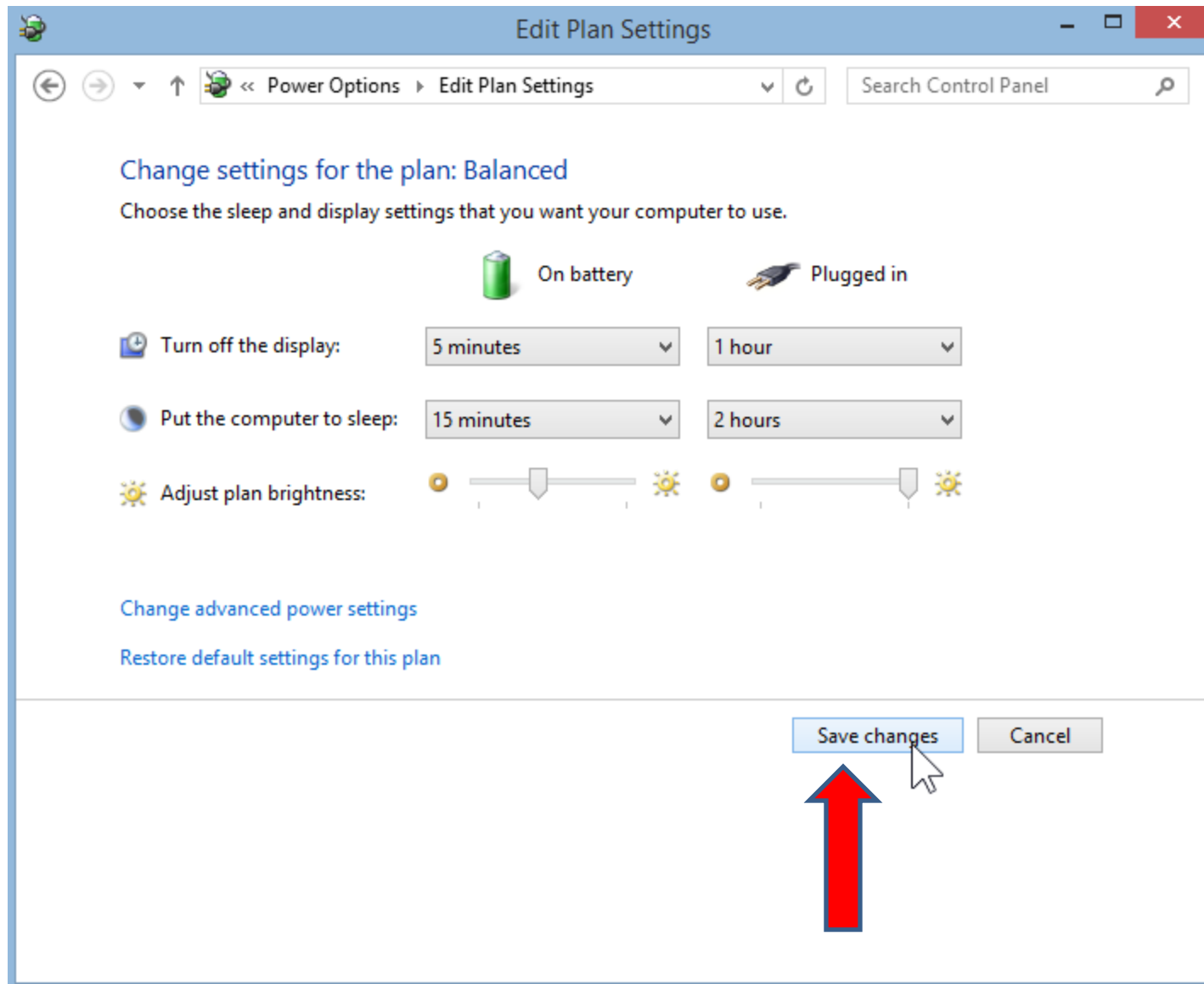
- Click on dropdown on the first one and click on 1 hour.



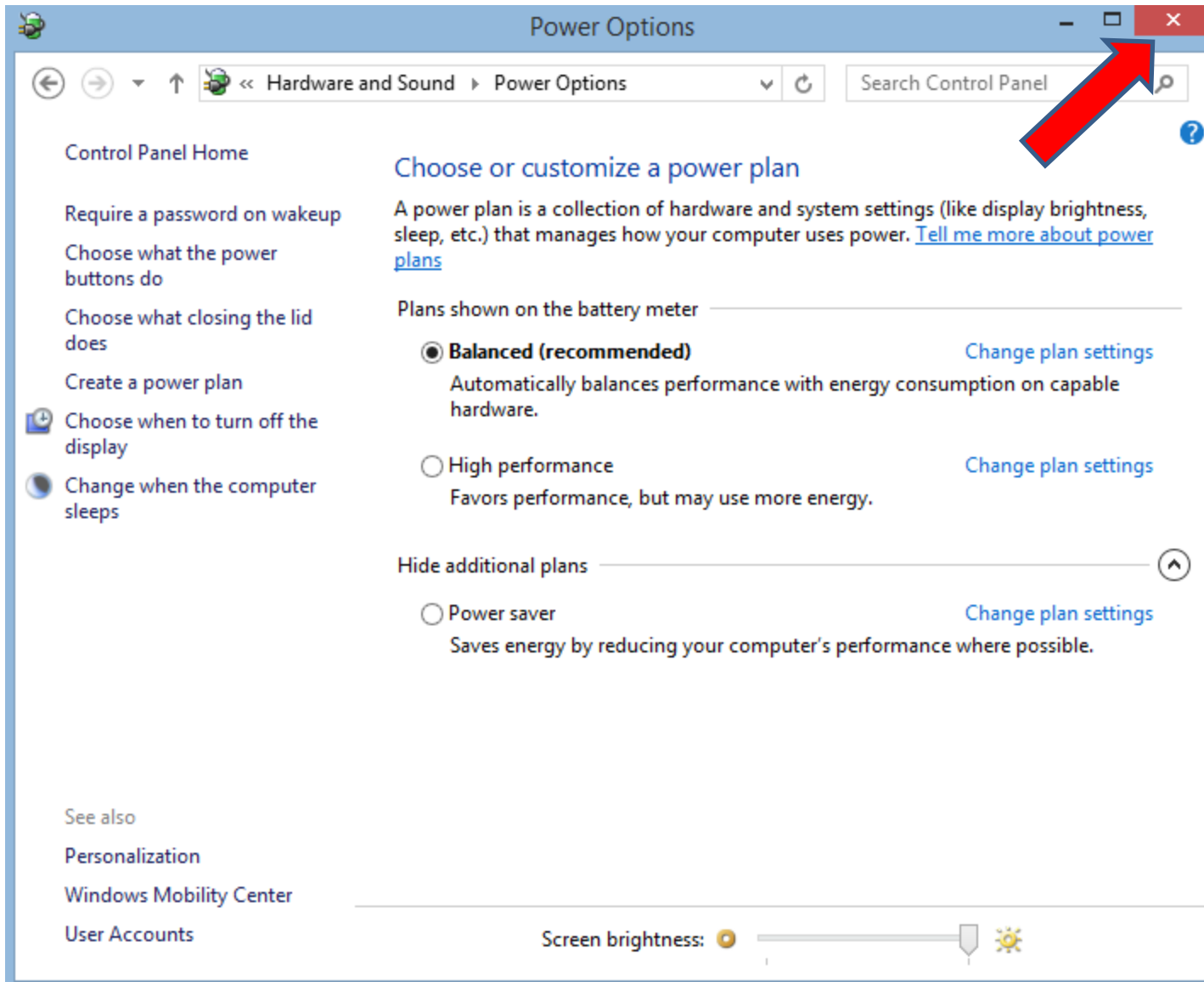
- Click on dropdown on the second one and click on 2 hours.



- Then click on Save Changes.



- It then goes back to the original page, then click on the X to close.



This is the end of Step 10.