

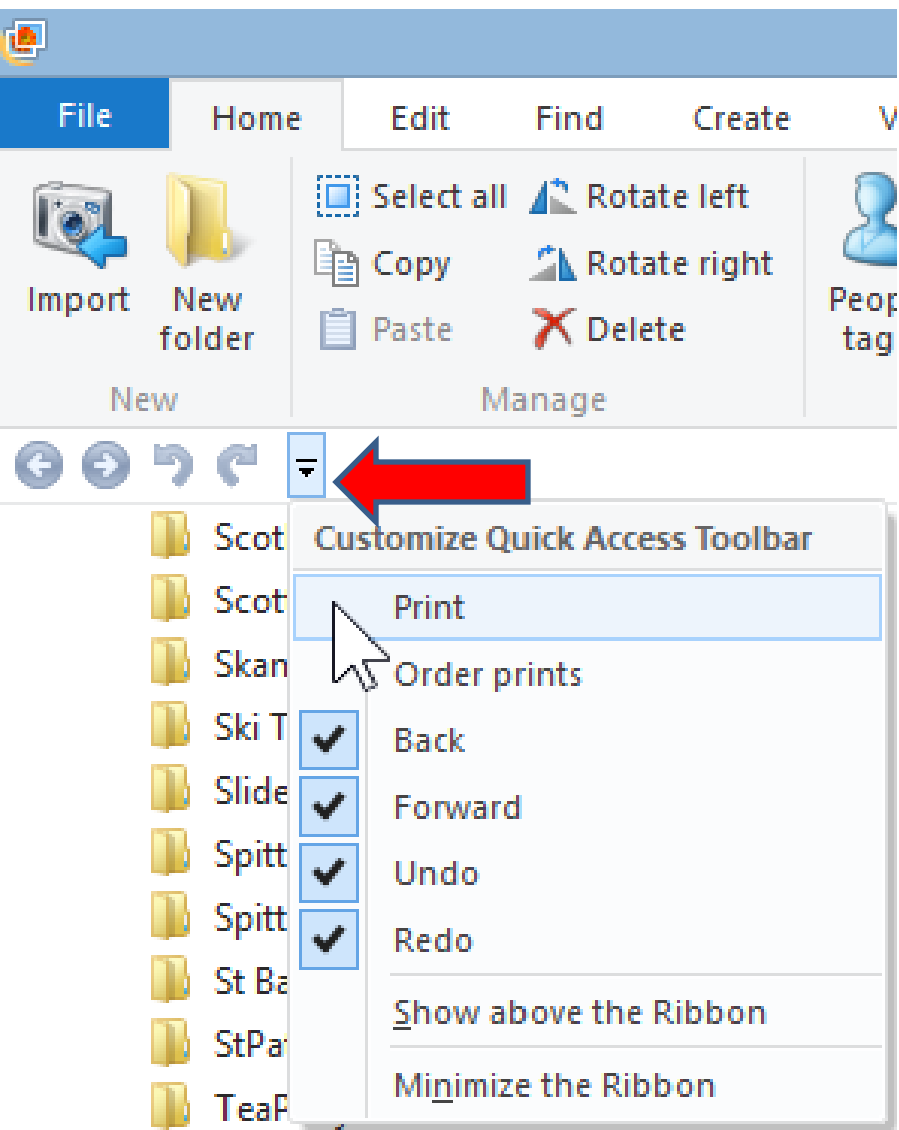
Step 11 – Print

How to Print Photos?

- If you want to print one Photo, you just click on it first.
- If you want to print more than one Photo, you click on the first one, press and hold the Ctrl key and click on the other Photos you want.
- If you want all photos in a folder, you click on the first one, press and hold the Shift key and click on the last Photo.
- Next is how to put Print icon on the Ribbon.
- After that is a sample of printing two photos.

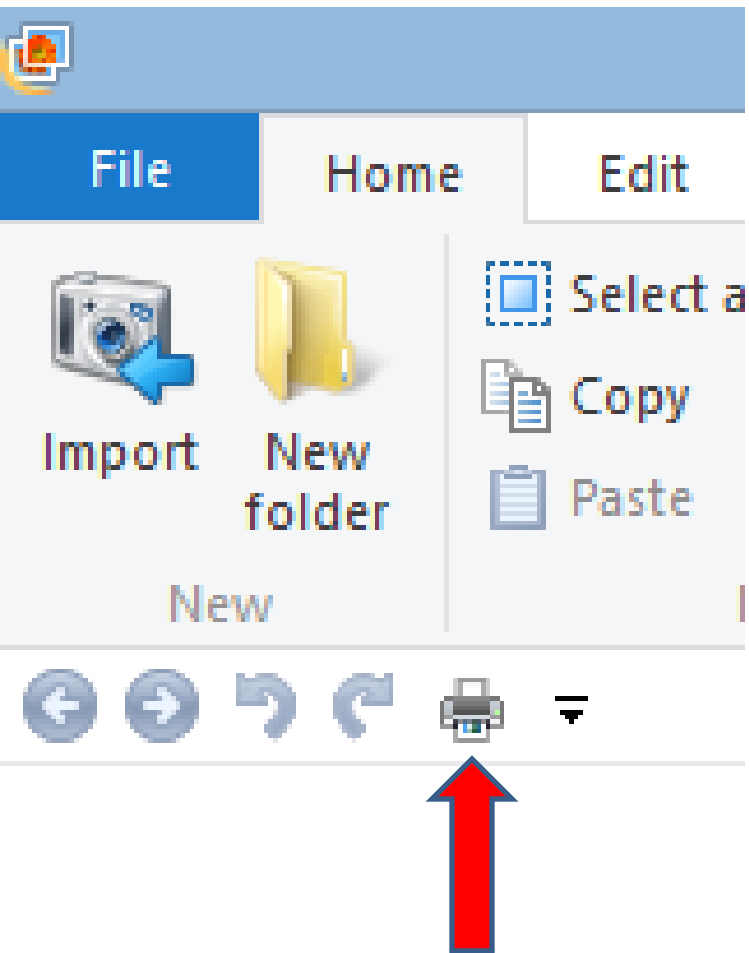
Click on dropdown.

- Then, click on Print



You then see the Print Icon.

- Next is how to print two photos.

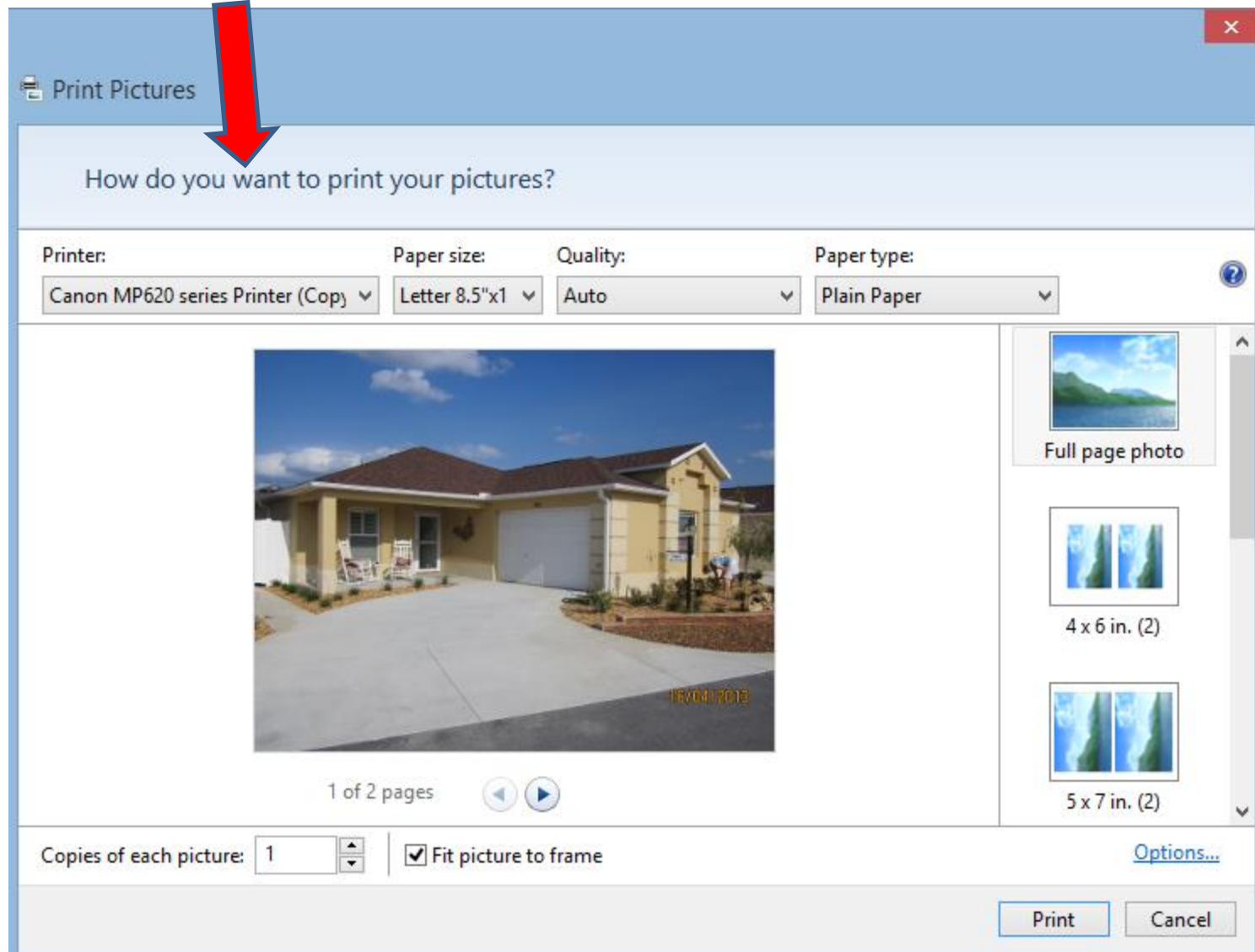


I highlighted two Photos. Next, click on Print icon

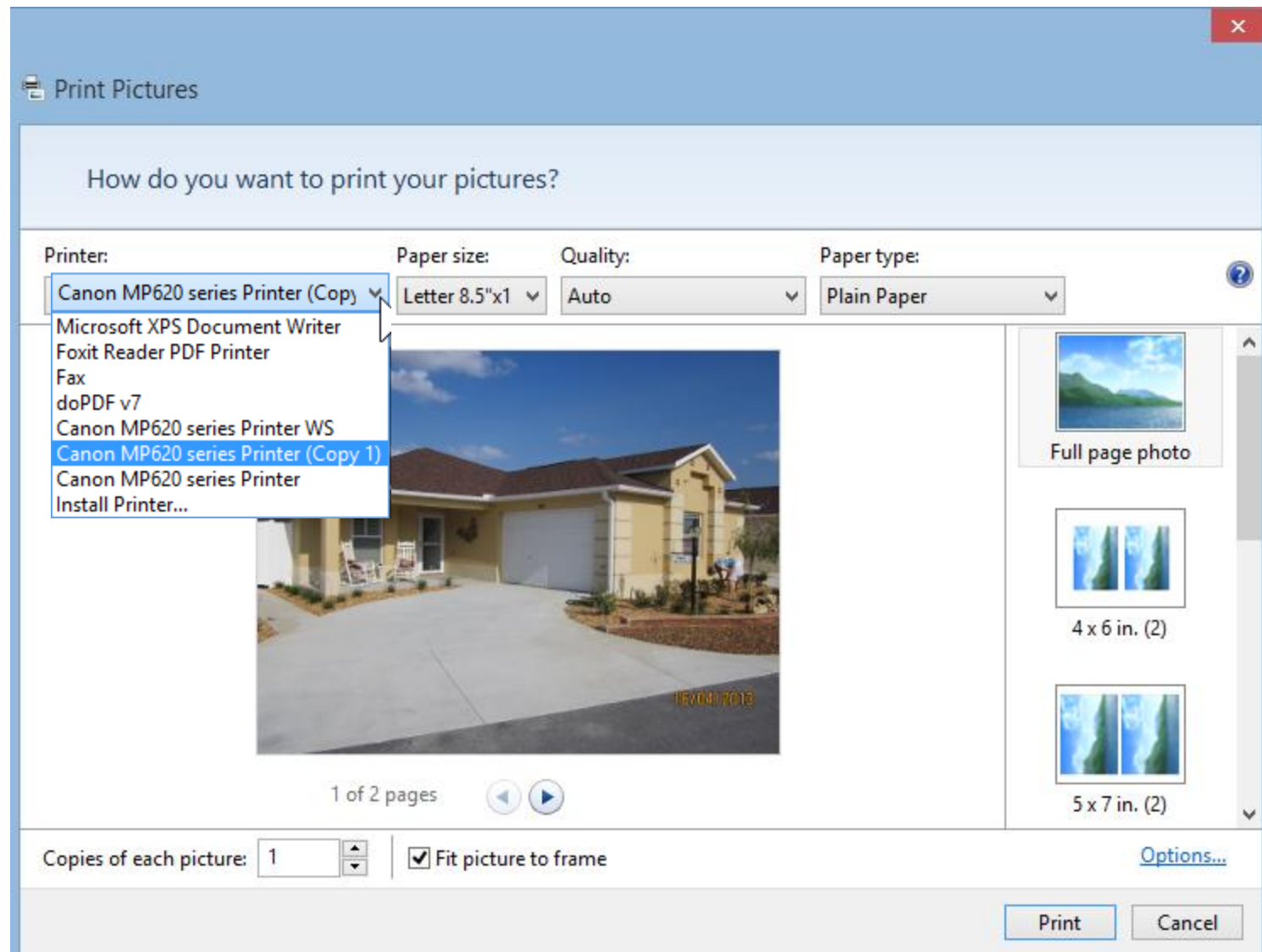
The screenshot shows the Windows Photo Gallery application window. The title bar reads "Photo Gallery". The ribbon menu includes tabs for File, Home, Edit, Find, Create, and View. The Home tab is active, showing options like Import, New folder, Select all, Copy, Paste, People tag, Batch people tag, Geotag, Descriptive tag, Caption, Rate, Flag, Months, Rated, Text search, Slide show, Share (with Facebook and Photo email icons), and Sign in. The navigation pane on the left shows a folder tree with "Temp" selected. The main area displays a folder named "C:\Users\fbenson103...\Home\2013" containing 27 items, with 2 selected. The selected items are "TheVillages 019.JPG" and "TheVillages 020.JPG". The "Print" icon in the navigation pane is highlighted with a red arrow. Two red arrows also point to the two selected photo thumbnails in the main area.

File Name	Date and Time	Size	Resolution	Rating
TheVillages 019.JPG	4/16/2013 10:37 PM	506 KB	1600 x 1200	★★★★★
TheVillages 020.JPG	4/16/2013 10:38 PM	537 KB	1600 x 1200	★★★★★
TheVillages 023.JPG	4/16/2013 10:39 PM	477 KB	1200 x 1600	★★★★★
TheVillages 024.JPG	4/16/2013 10:40 PM	467 KB	1600 x 1200	★★★★★

New window opens and asks How do you want to print your pictures?



There are different options. I will show you each of them.



- **Second, is Paper size.**
- **Click on Paper size download and you see the Paper size options. The default is 8.5 x 11, which is typical.**

How do you want to print your pictures?

Printer:

Canon MP620 series Printer (Copy) ▾

Paper size:

Letter 8.5"x11" ▾

Letter 8.5"x11"

4"x6" 10x15cm

5"x7" 13x18cm

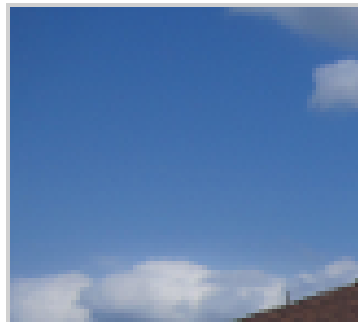
8"x10" 20x25cm

A4

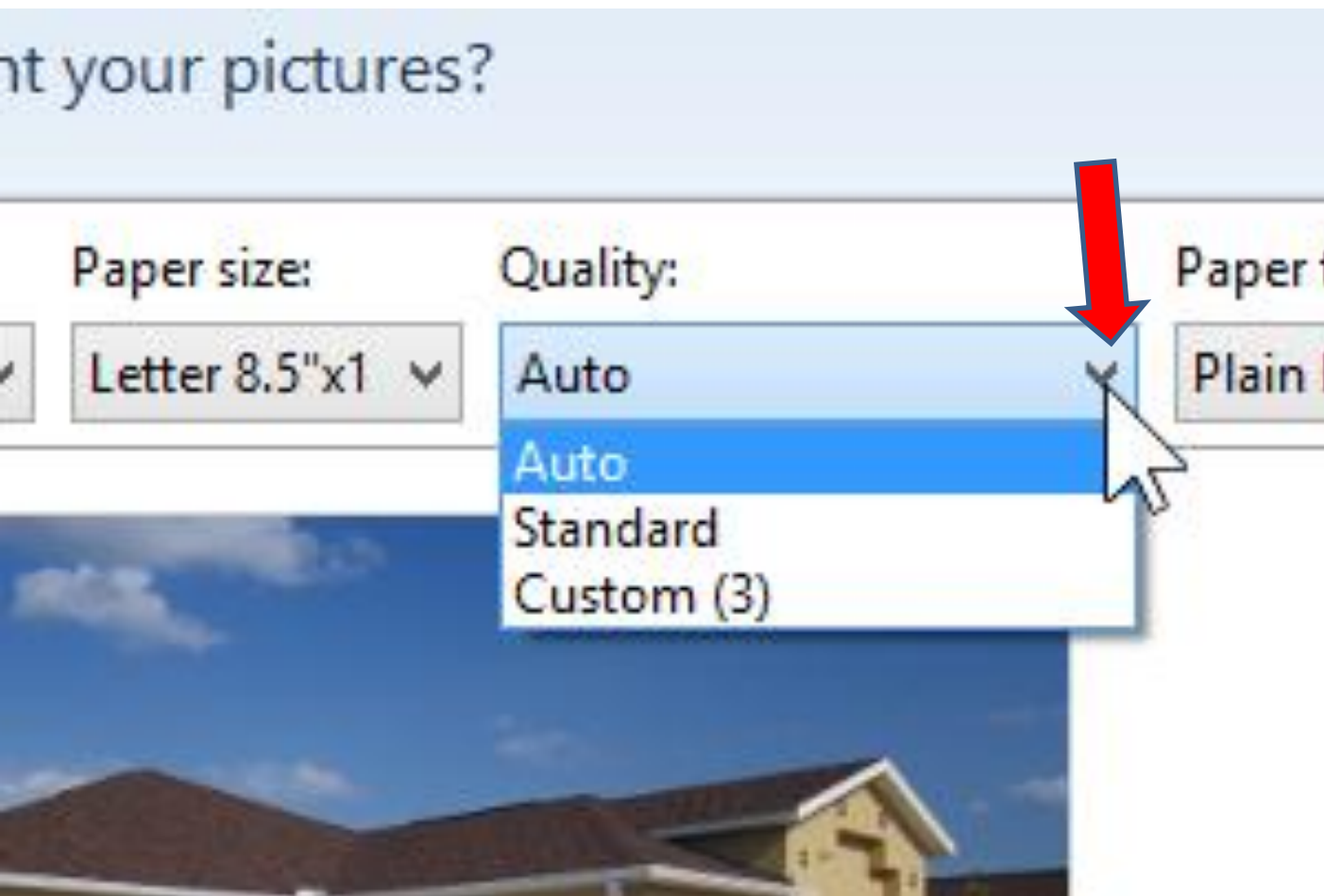
More...

Quality:

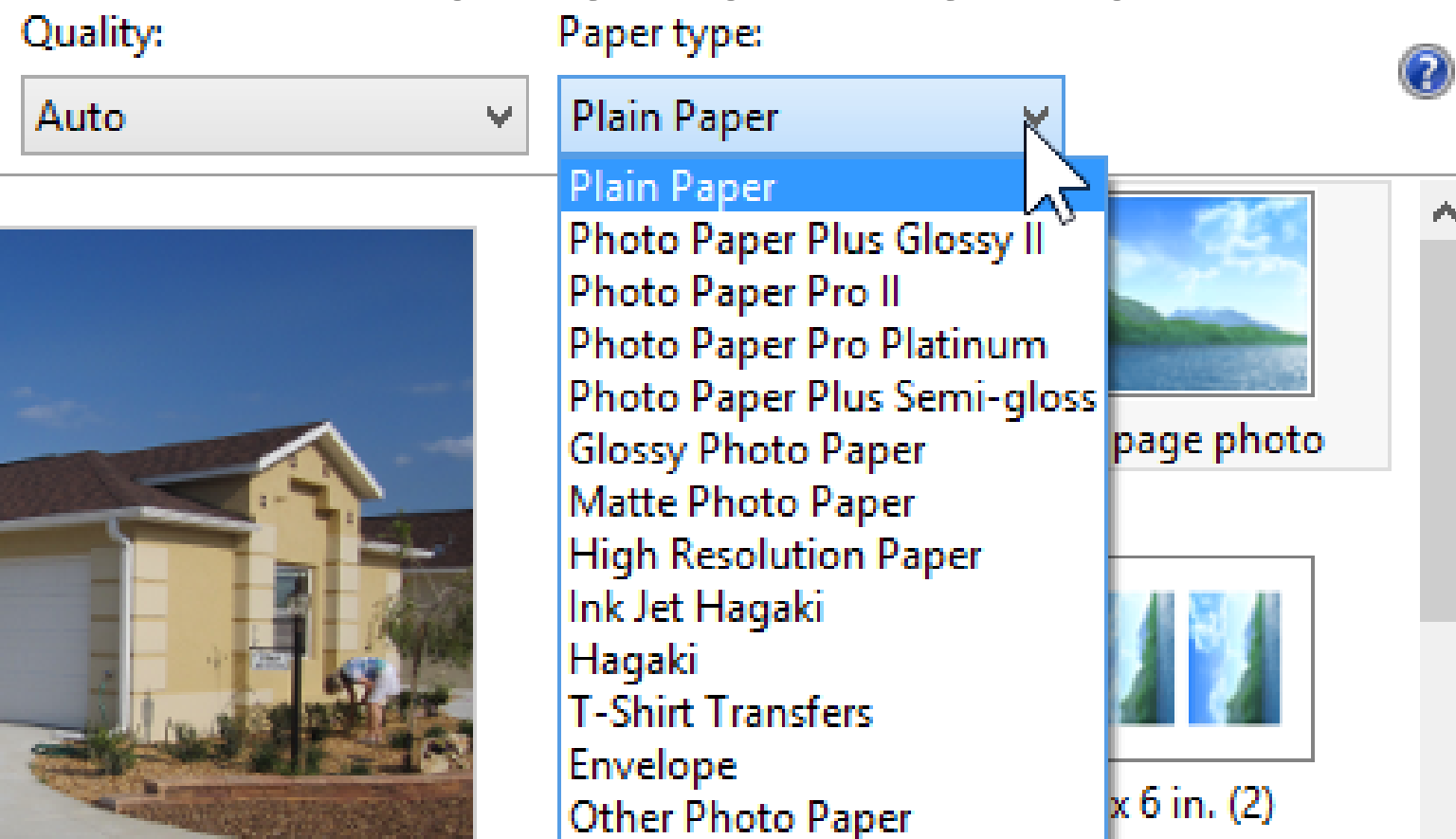
Auto



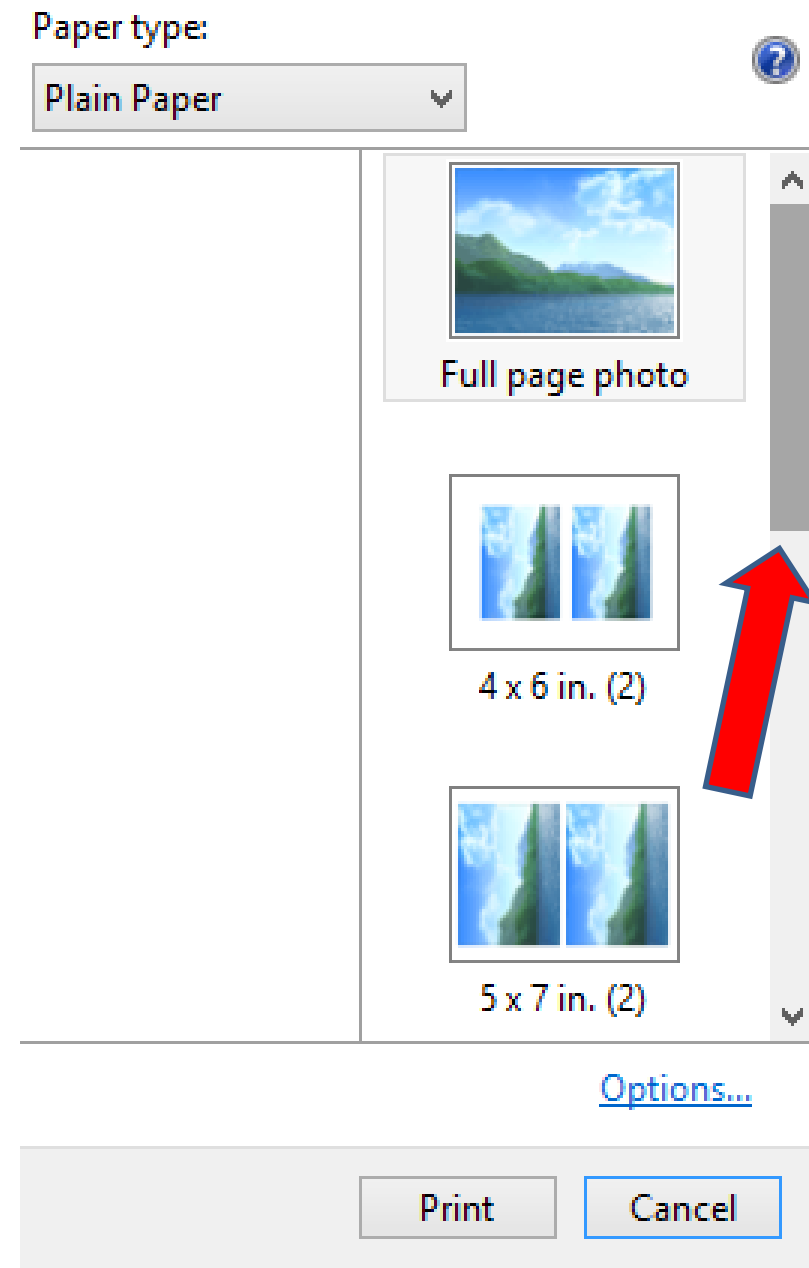
- **Third, is Quality.**
- **I recommend you just keep Auto.**



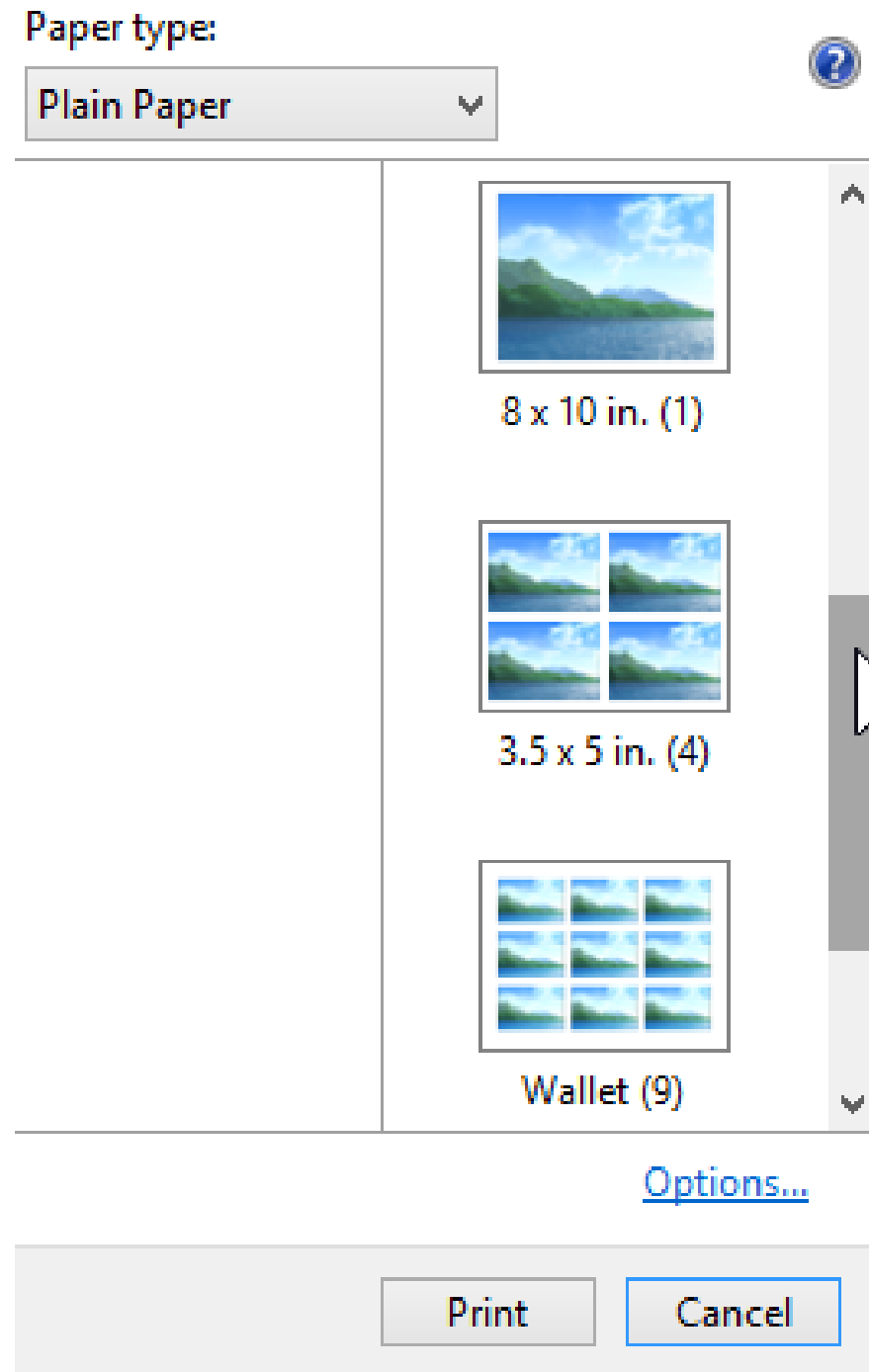
- **Forth, is Quality.**
- **Click on dropdown and you see options.**
- **If you want to print a picture and put it in a frame, I recommend you select one of the Photo Paper you put in your printer**



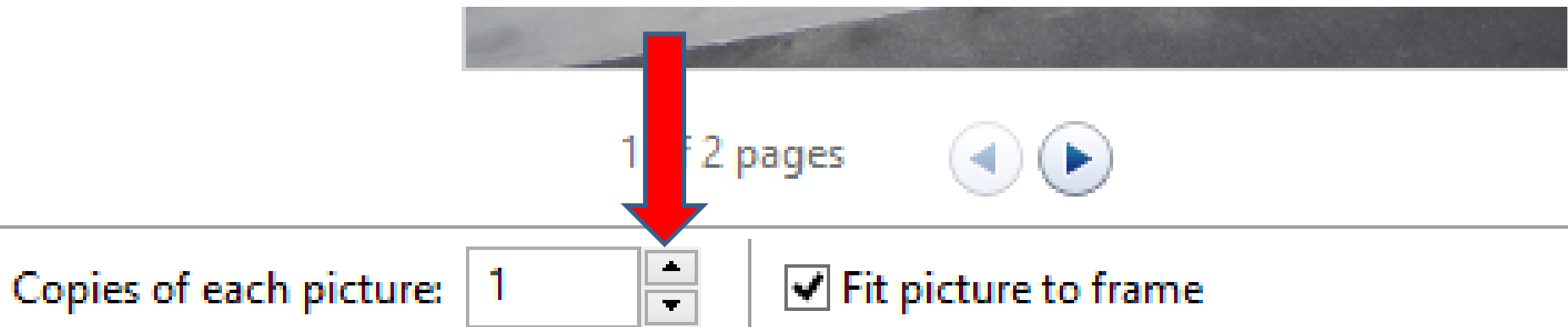
- Fifth, is type to print on the right.
- First is full page to print one photo on the page
- Second is to print both photos with size of 4 x 6
- Third is to print both photos with size of 5 x 7
- Next you scroll down. You left click on the icon in the right and hold it down and scroll down.



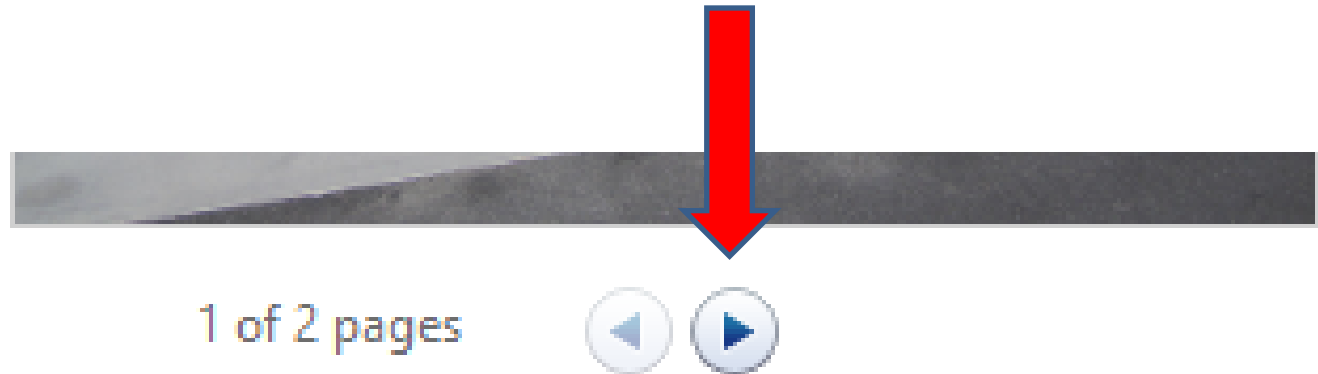
- You then see other options.
- Once you find one, click on it.



- **Sixth, is Copies of each picture.**
- **At the bottom you see it. Default is one.**
- **Click on the top icon to increase to 2 or more.**
I will show sample next.
- **Note – Fit picture to frame is checked. I recommend you keep it checked.**



- You see 2 sample.
- You also see 1 of 2 pages. If you click on the forward, it shows the second picture.



Copies of each picture: | Fit picture to frame

- You then see the second picture.
- Next is the last step.



- You click on Print and it shows process.
- This is the end of Step 11.

