

Step 2 – Part A – Upload Pictures and/or Videos from your Camera with Photo Gallery

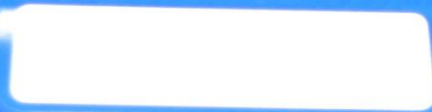
- **Make sure you have Photo Gallery. If not, download on Step 1 – Part B.**
- **If you can insert an SD card to your Computer, you first take the SD card out of you Camera.**
- **Next is a sample.**
- **Note – if you can't insert an SD card, I will show you another option.**



Next you insert it into your Computer.

- **Next is a sample.**

4 GB



Second Option.

- **If you can't insert SD card, you plug-in a USB from your camera.**
- **Next is a sample.**



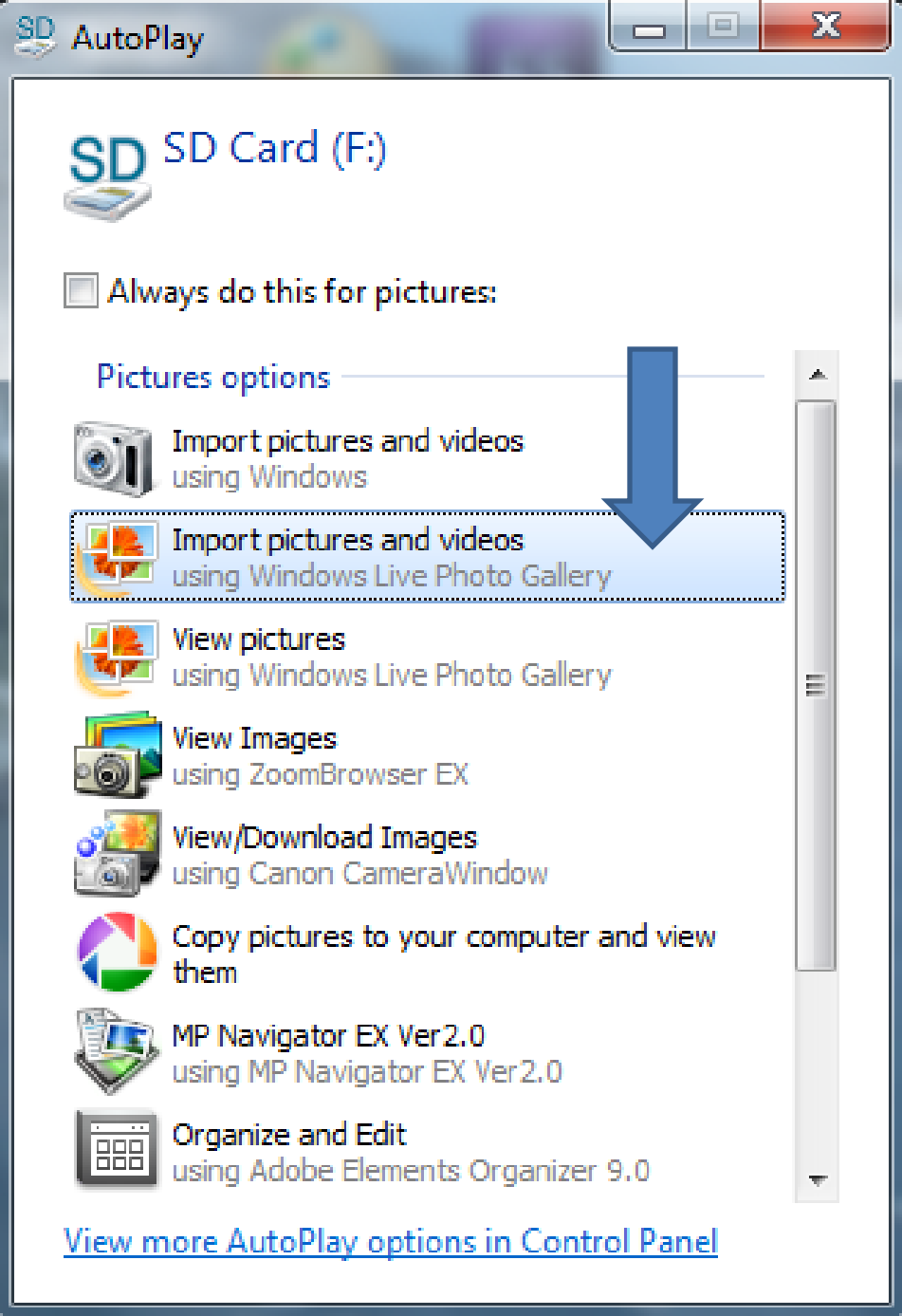
Canon

62-24.8mm 1:2.7-5.6

CANON ZOOM LENS 4X IS

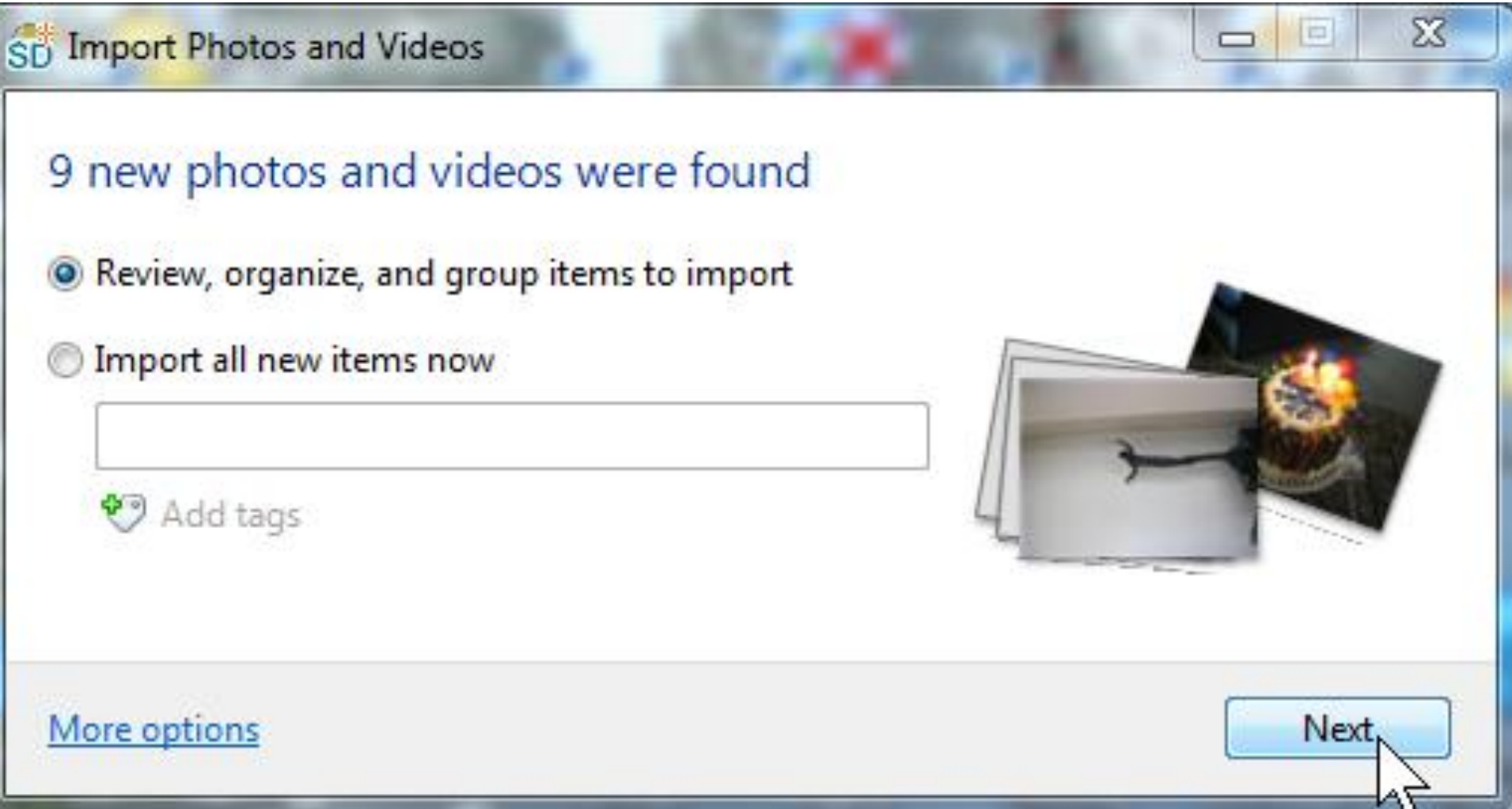
10.0
MEGA
PIXELS

4X
OPTICAL
ZOOM



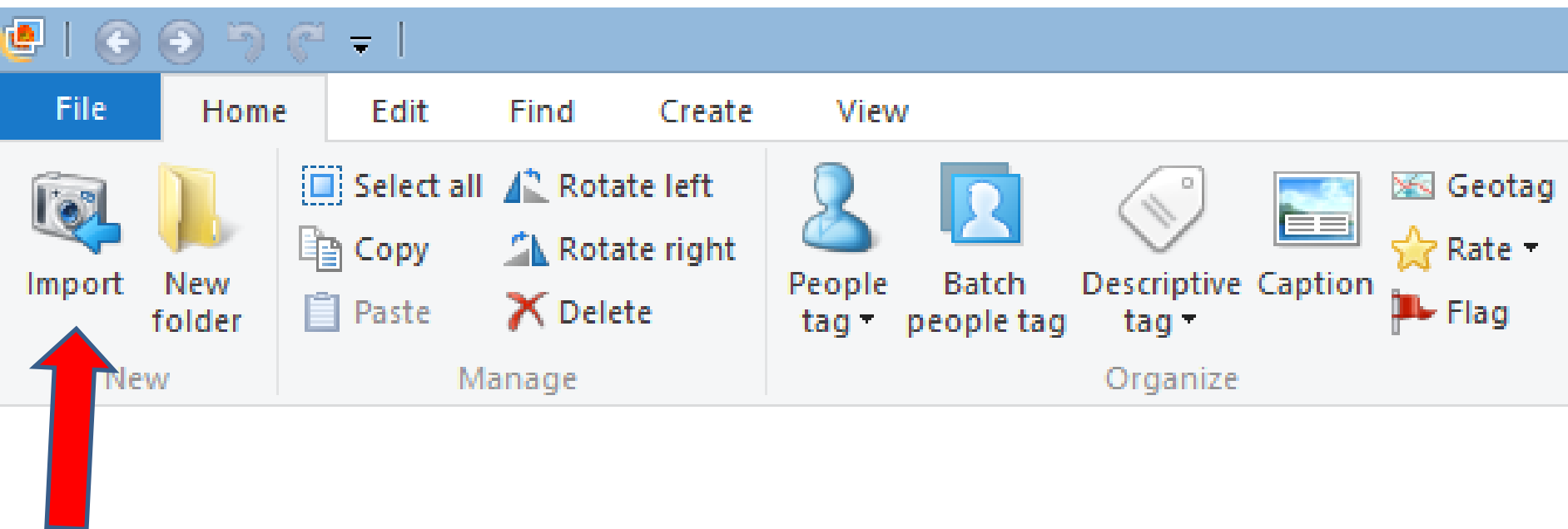
- Sometimes in Vista and Windows 7, this window opens. But sometimes it does not show in 2012 version. Next is the second option.
- If it opens, click on Import pictures and videos using Windows Live Photo Gallery.

New window opens. Next, I will show you the second option and the details.

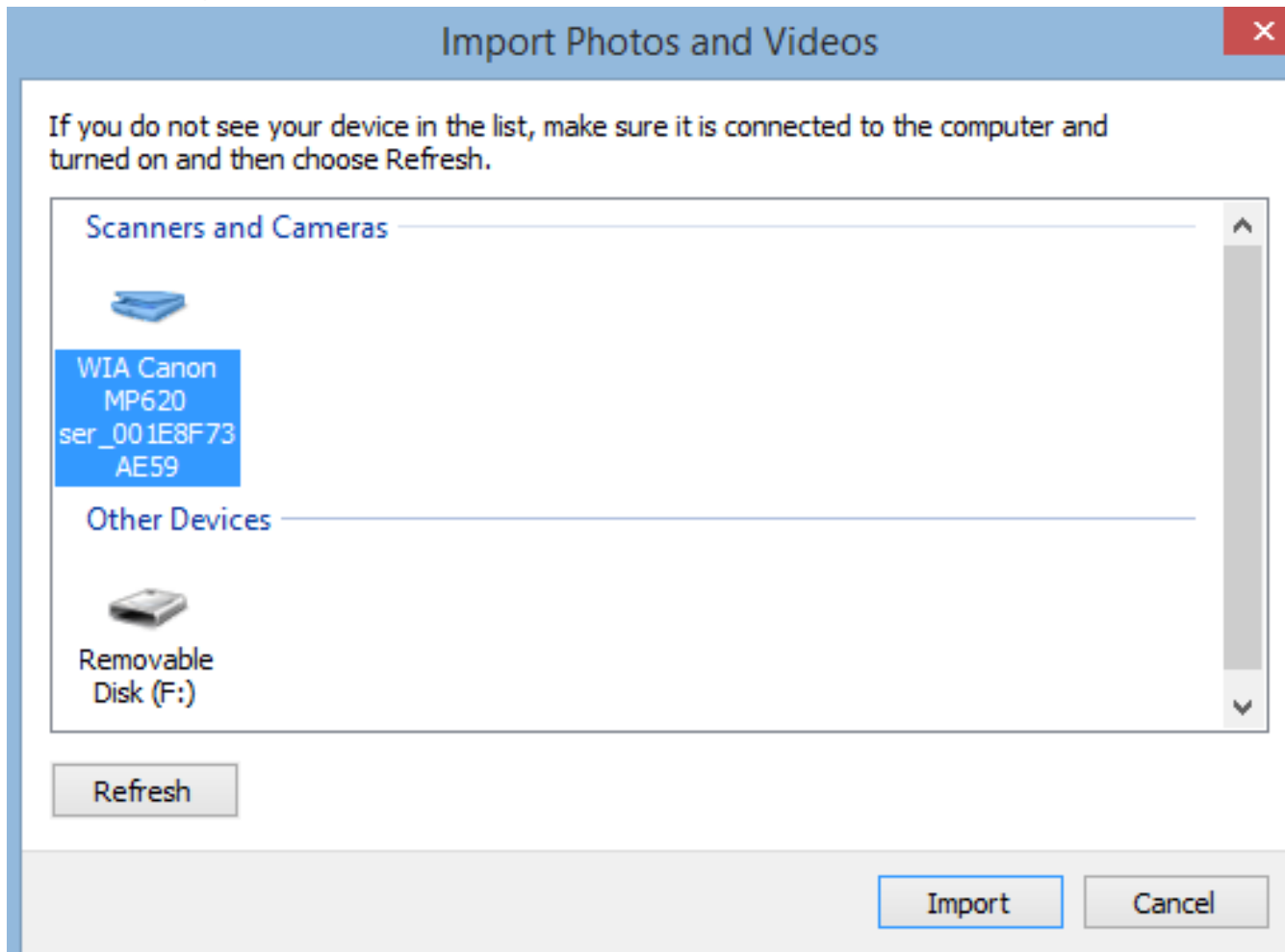


Second option, when you insert SD card or Camera, it does not show the SD options.

- You open Photo Gallery and click on Import in the upper left.



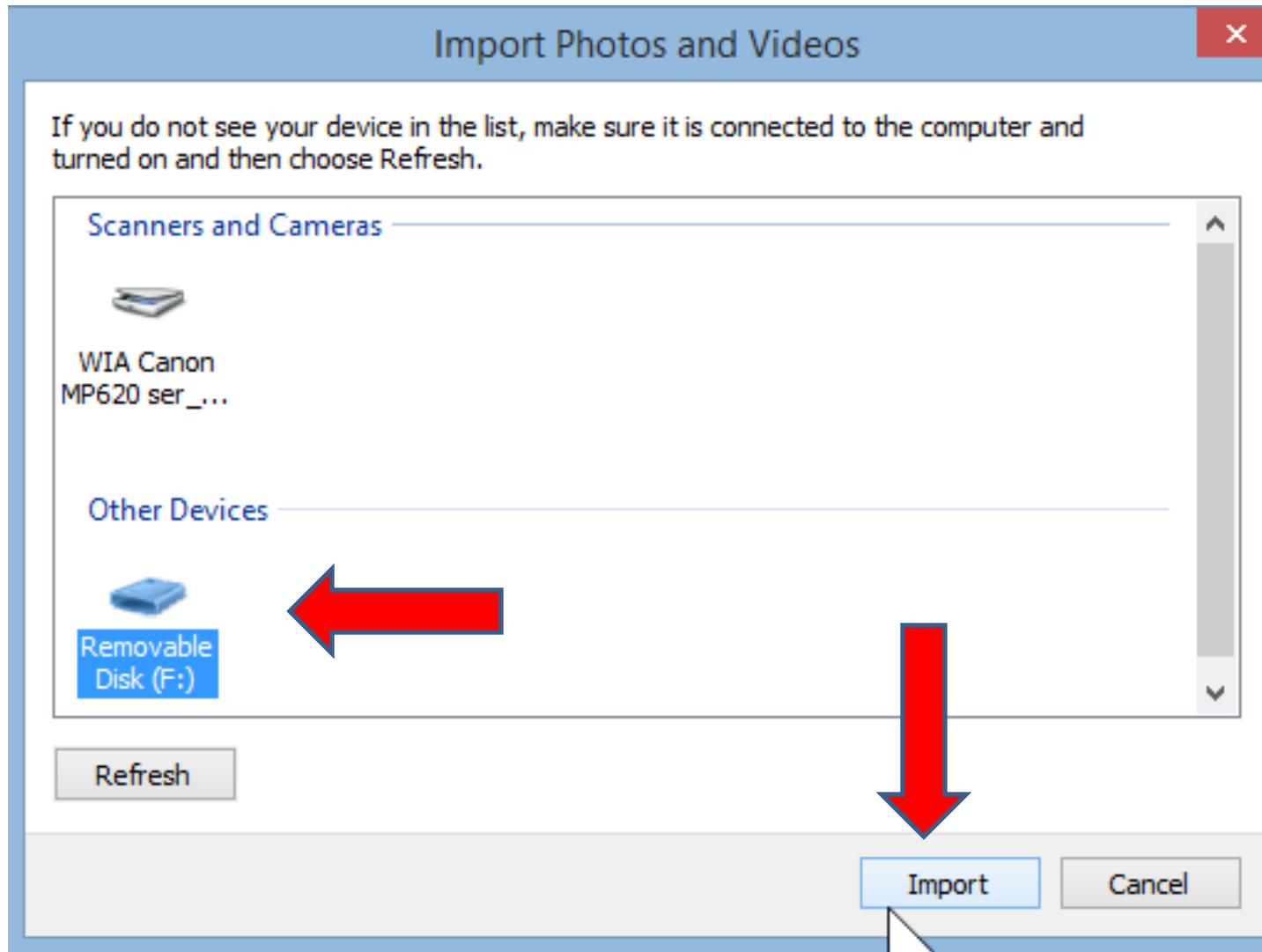
- A new window opens and you see Scanners and Cameras and Other Devices. I have a printer/scanner, so that's why you see it. Under that is Other Devices, which is the SD card inserted.



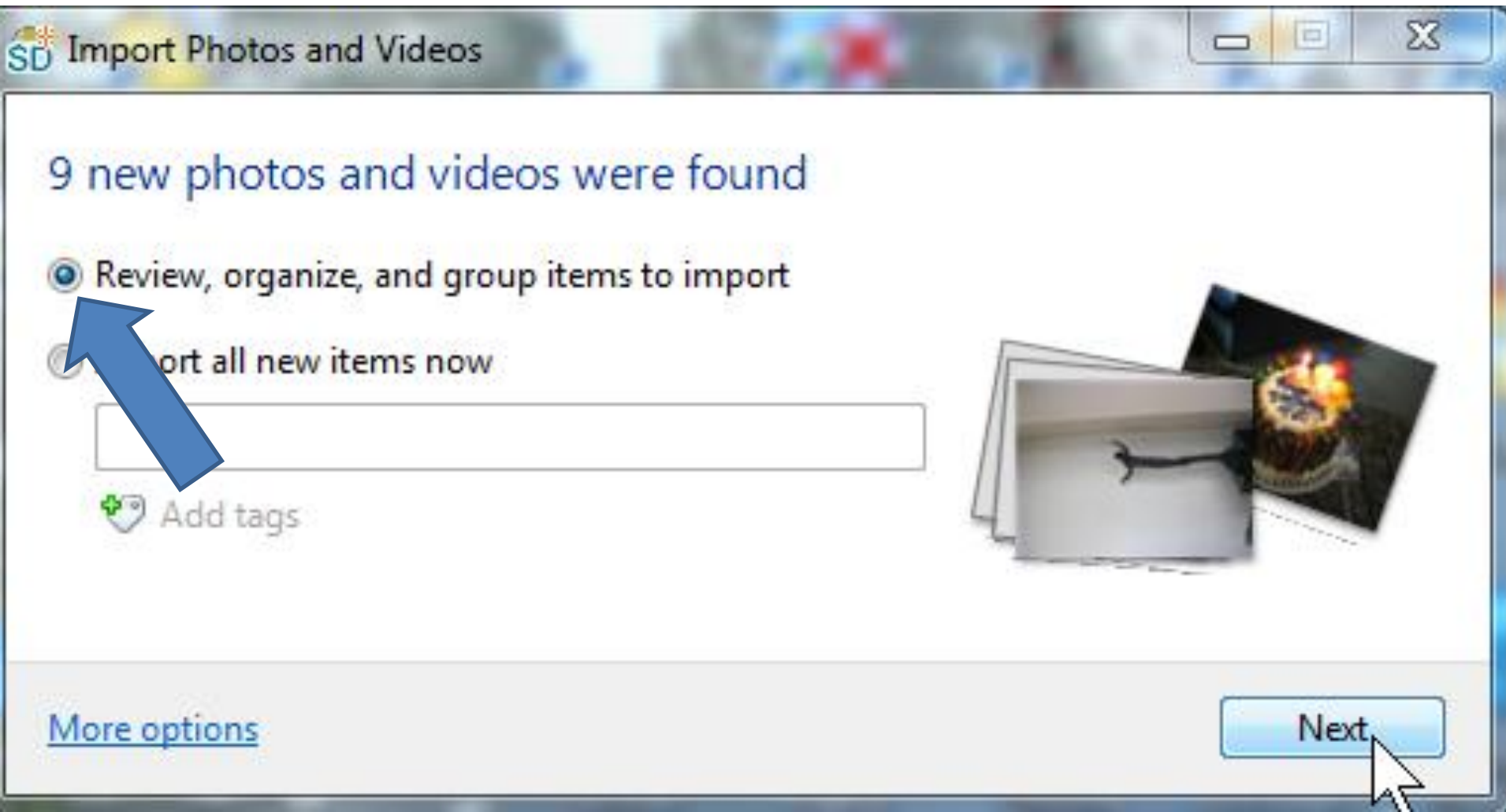
**If you insert the camera with USB,
you should also see the camera on
Import Photos and Videos.**

- **Next, I will show you the process with the SD card.**

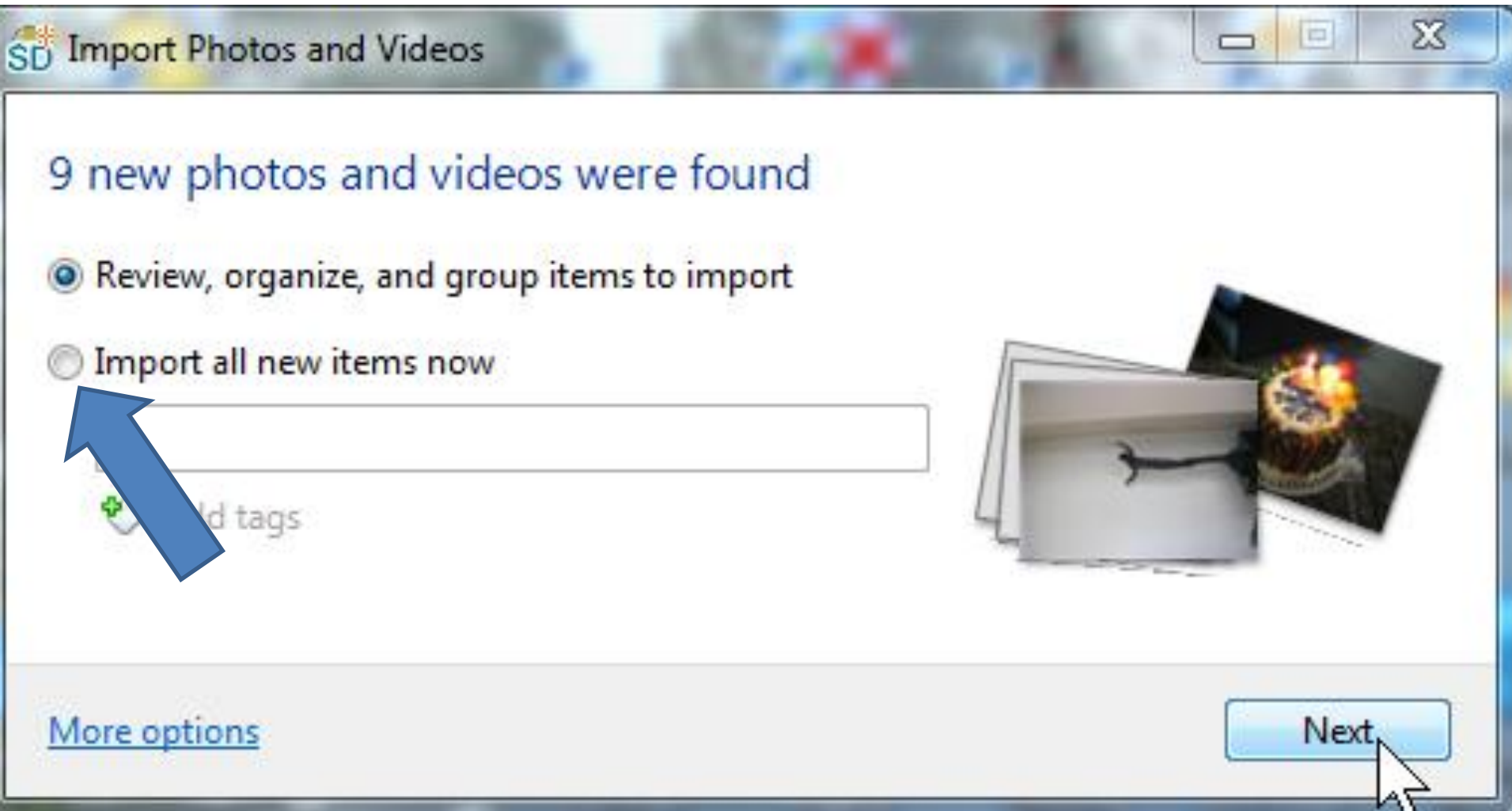
- **Click on the Removable Disk (F:) and then click on import.**



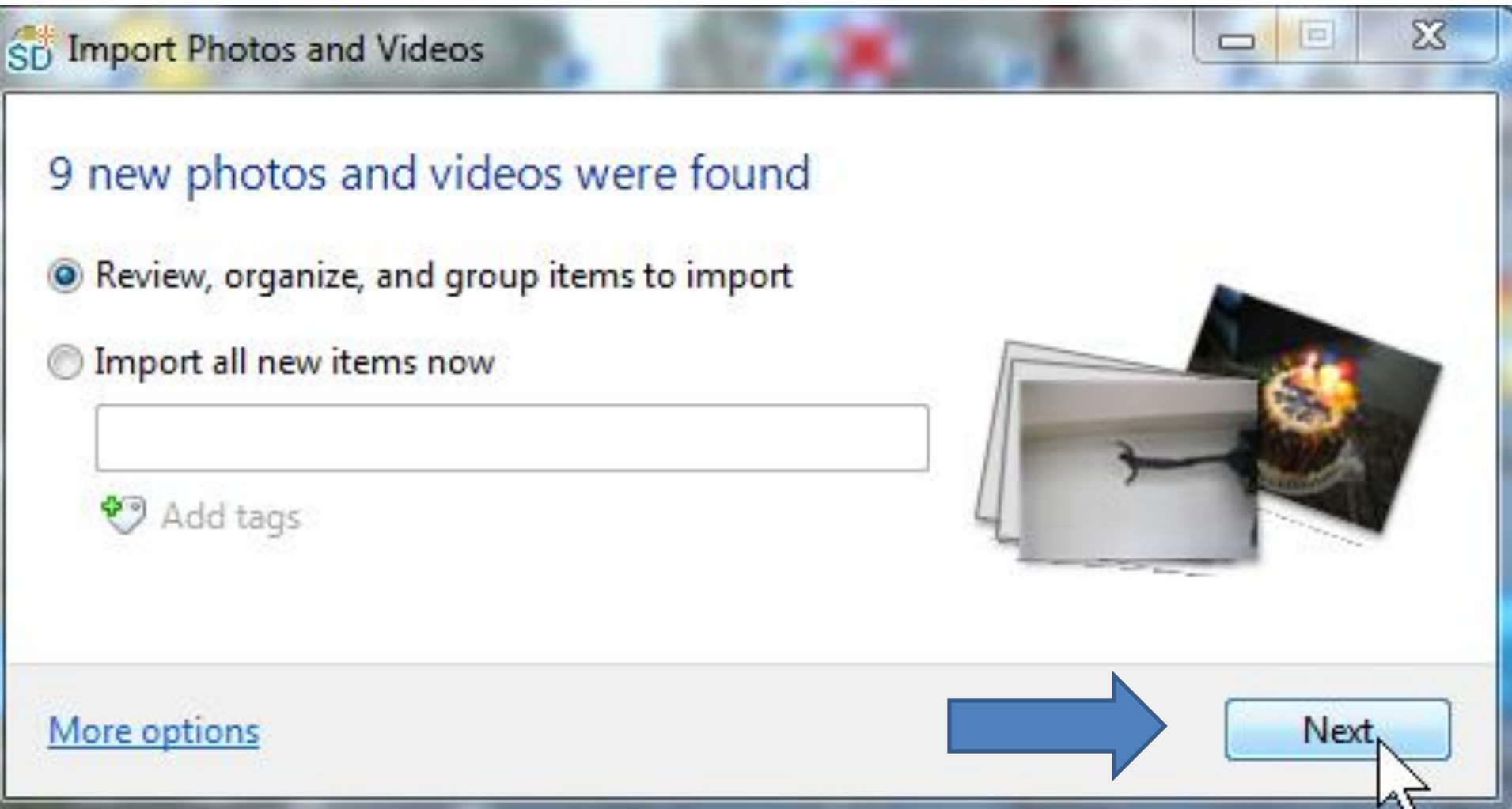
**New window opens like I showed you before.
If you have photos on multiple places on
Vacation, make sure Review is highlighted.**



If you have photos on just one place, you can click on Import all. I will show you that at the end.

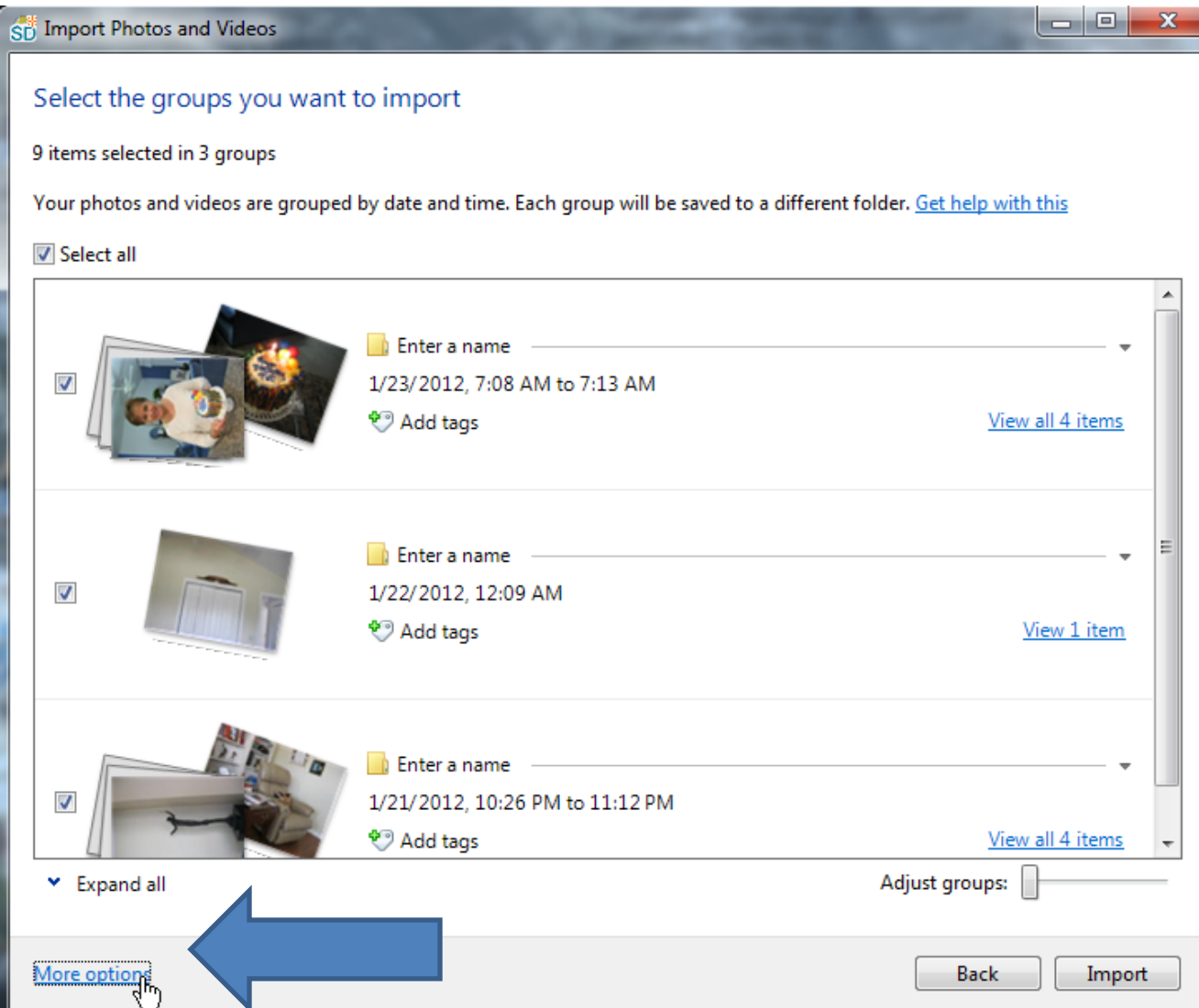


Next, click on Next.



New window opens. It shows groups by each day.

- Next, click on More Options.

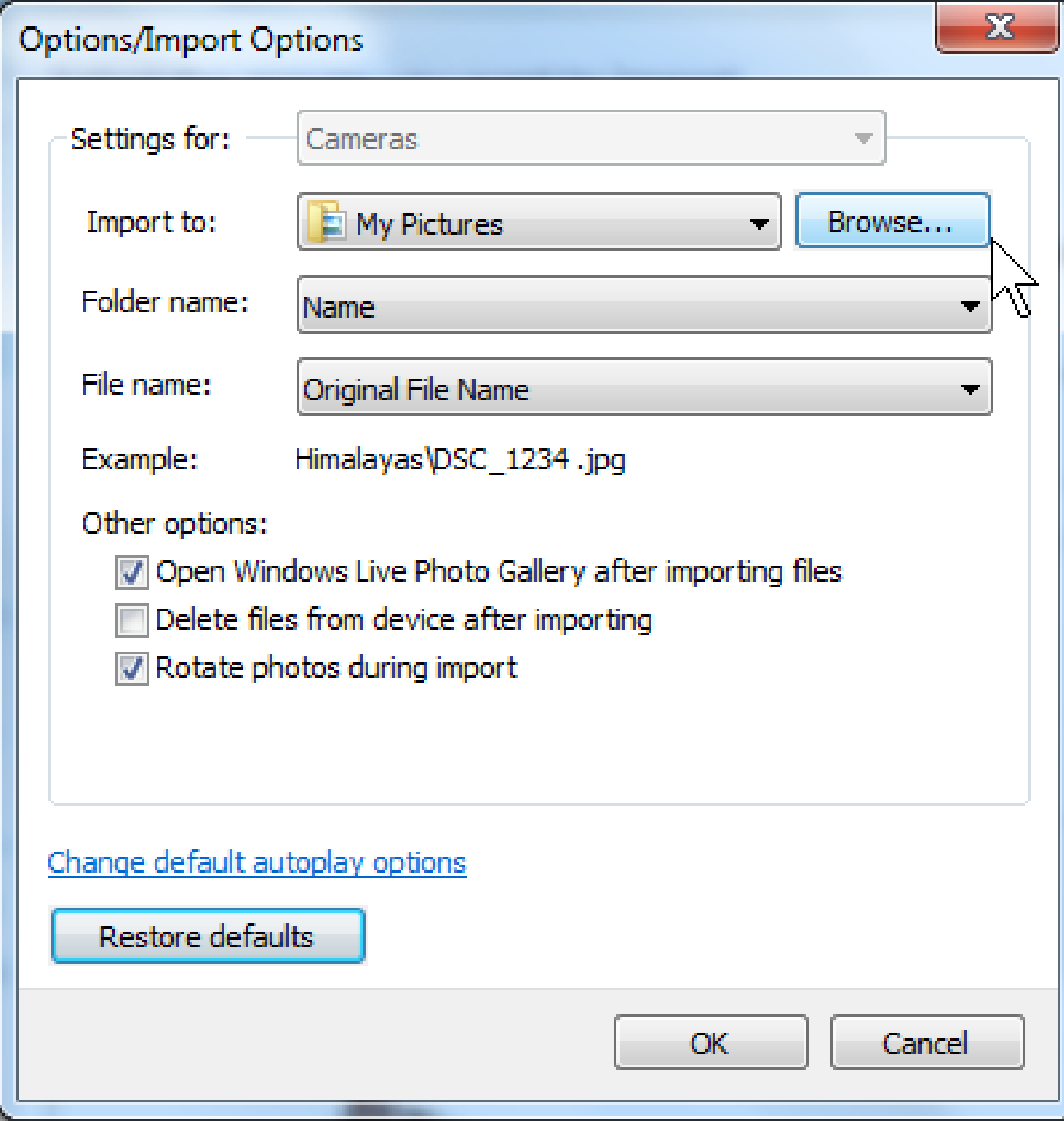


The screenshot shows a window titled "SD Import Photos and Videos". The main heading is "Select the groups you want to import". Below this, it states "9 items selected in 3 groups" and provides instructions: "Your photos and videos are grouped by date and time. Each group will be saved to a different folder. [Get help with this](#)".

There is a "Select all" checkbox which is checked. The main area displays three groups of photos, each with a checkbox, a thumbnail, a folder name input field, a date range, an "Add tags" button, and a "View all X items" link.

- Group 1: 1/23/2012, 7:08 AM to 7:13 AM. View all 4 items.
- Group 2: 1/22/2012, 12:09 AM. View 1 item.
- Group 3: 1/21/2012, 10:26 PM to 11:12 PM. View all 4 items.

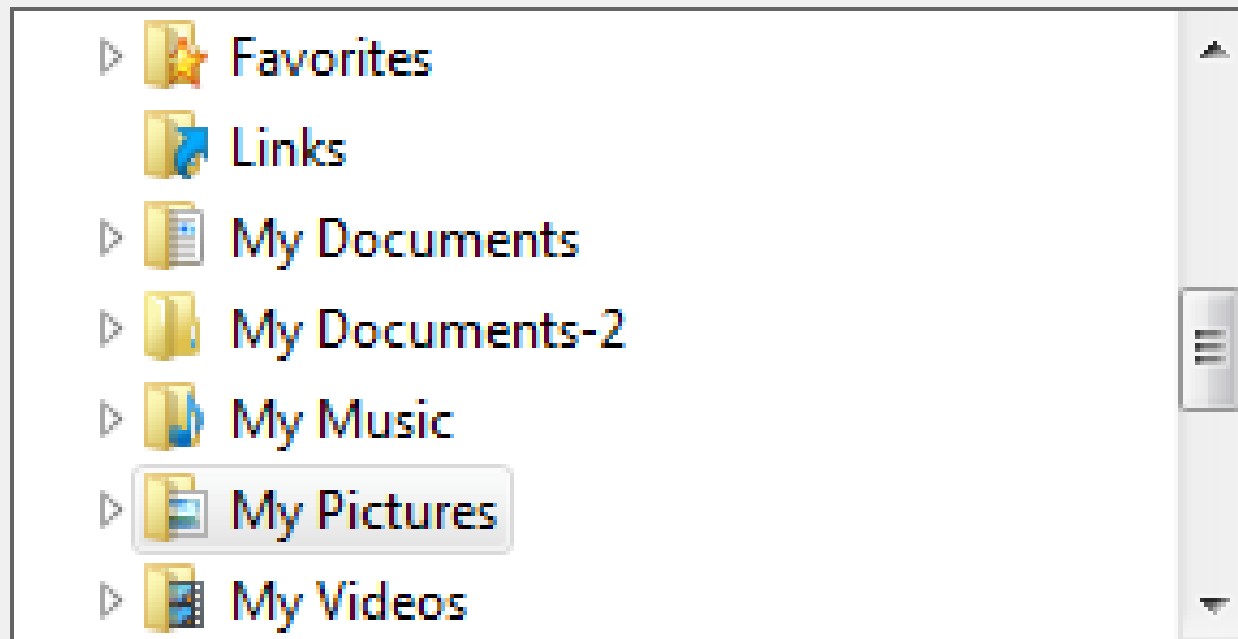
At the bottom left, there is an "Expand all" link and a "More options" link. A large blue arrow points from the "More options" link towards the right. At the bottom right, there are "Back" and "Import" buttons. An "Adjust groups" slider is also visible.



- **New window opens.**
- **Click on Browse to find where to import.**

Browse For Folder

Choose a location to store your photos and videos:



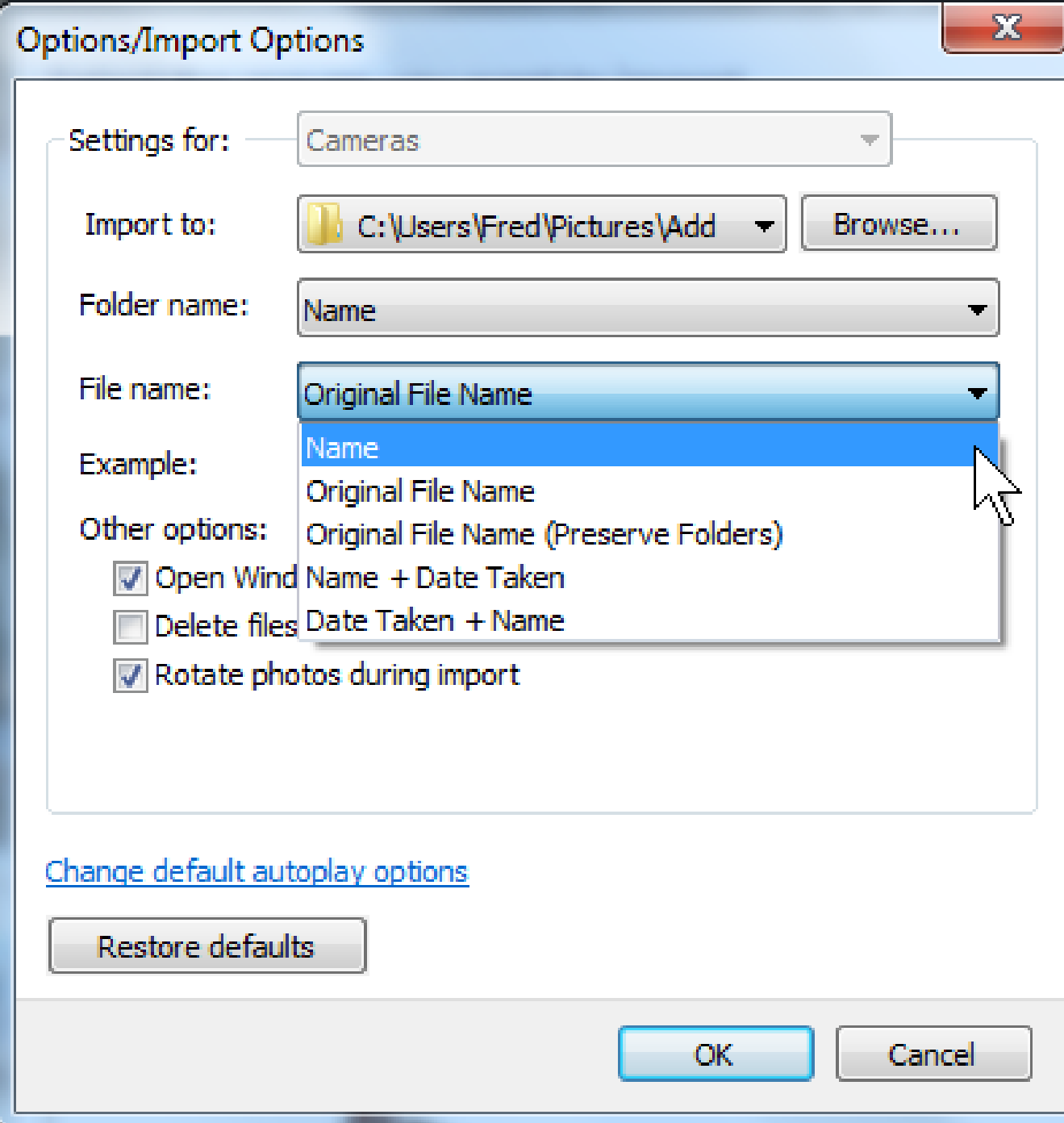
Folder: My Pictures

Make New Folder

OK

Cancel

- **New window opens.**
- **Click on like My Pictures, then Make New Folder and then click on OK**



- You then see Import to has changed.
- Then click on File Name and select Name.

Options/Import Options

Settings for:

Cameras

Import to:

C:\Users\Fred\Pictures\Add

Browse...

Folder name:

Name

File name:

Name

Example:

Himalayas\Himalayas 001 .jpg

Other options:

Open Windows Live Photo Gallery after importing files

Delete files from device after importing

Rotate photos during import

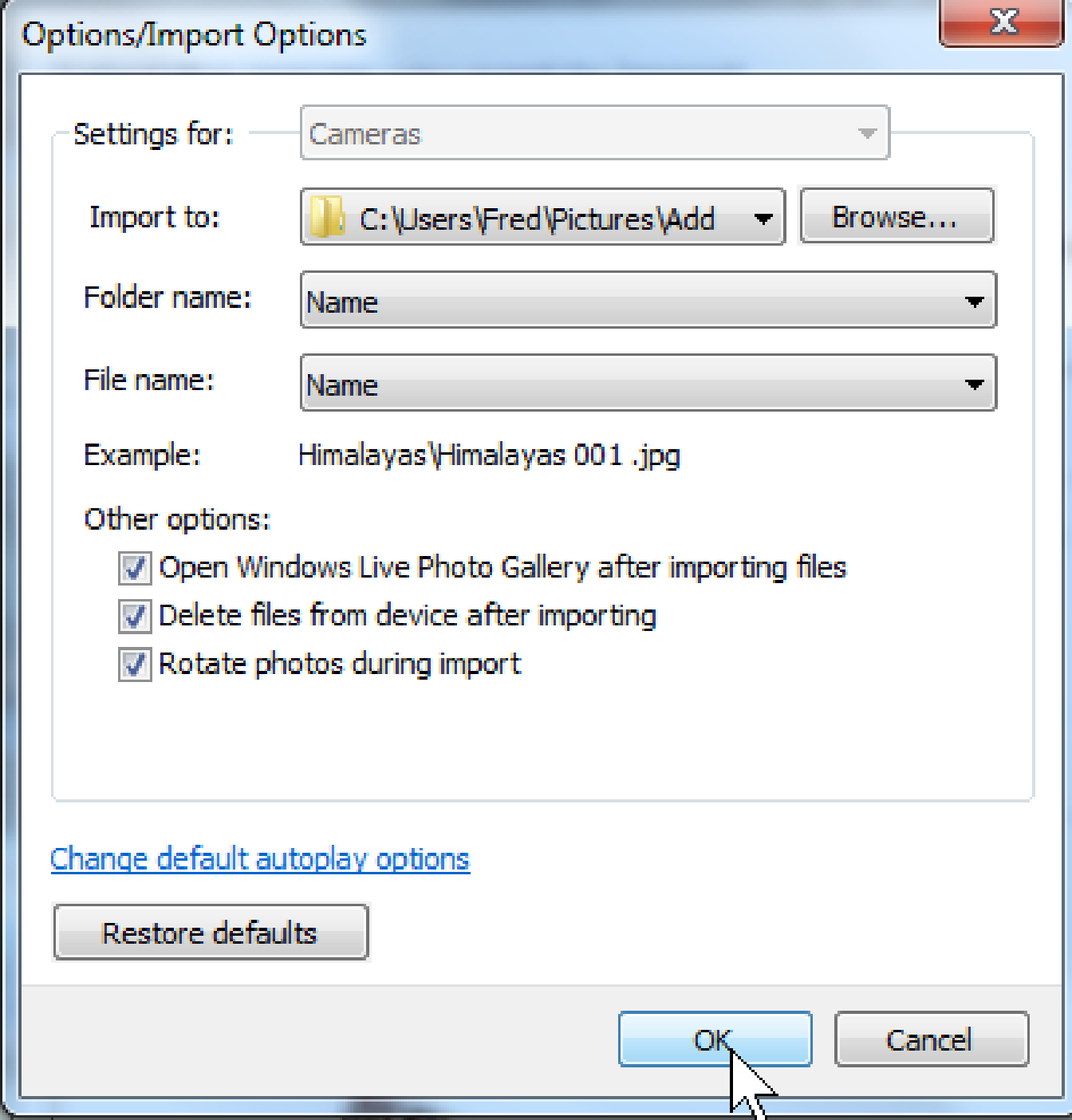
[Change default autoplay options](#)

Restore defaults

OK

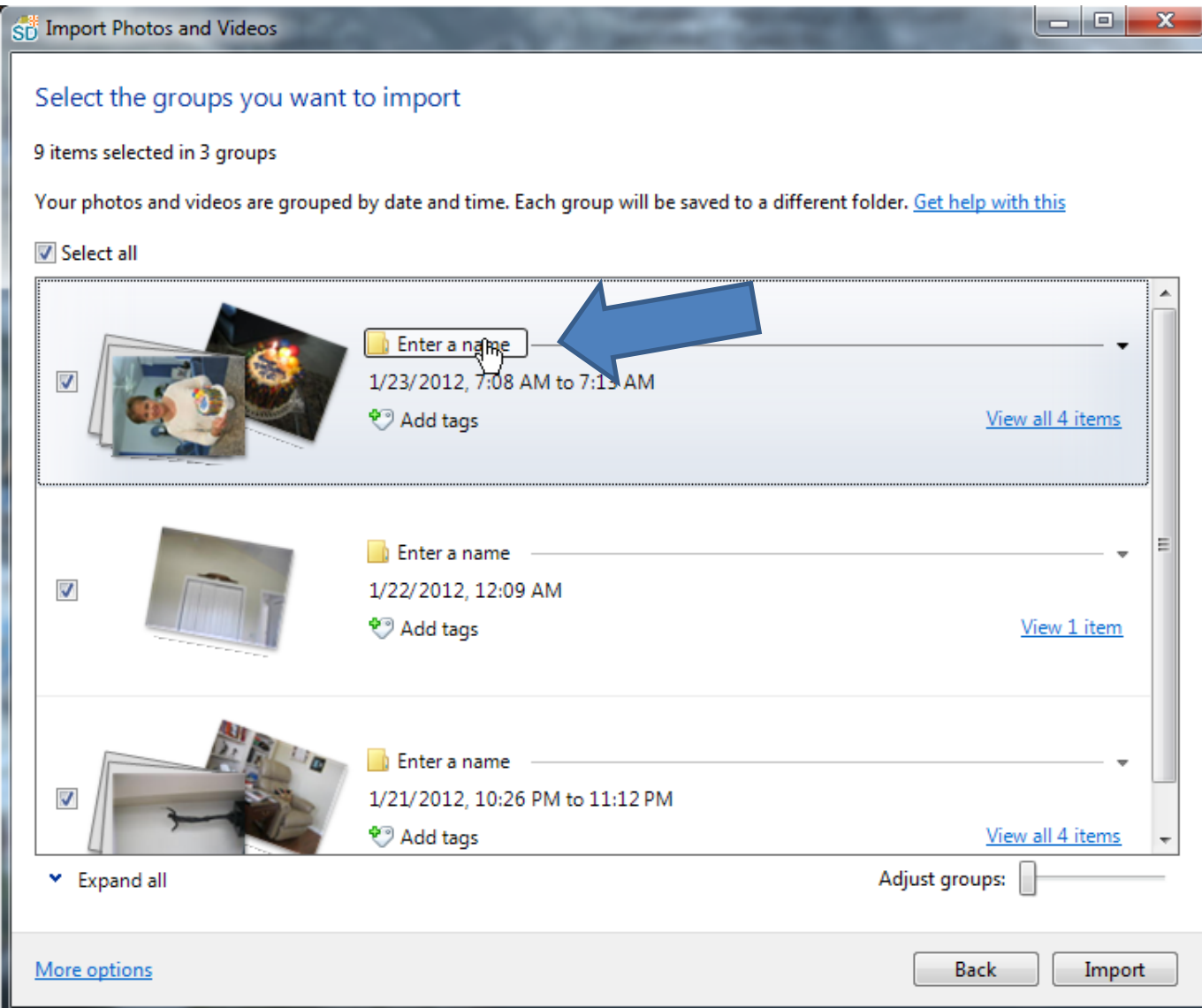
Cancel

- I suggest you like on Delete files.
- Once imported, the photos will not be on the SD card.



- Then, click on OK>

Then click on Enter a name.




The screenshot shows the 'Import Photos and Videos' window in Windows. The title bar reads 'SD Import Photos and Videos'. The main content area is titled 'Select the groups you want to import' and shows '9 items selected in 3 groups'. A message states: 'Your photos and videos are grouped by date and time. Each group will be saved to a different folder. [Get help with this](#)'. There is a 'Select all' checkbox which is checked. Below this, three groups of photos are listed, each with a checkmark on the left, a thumbnail of photos, a folder icon, an 'Enter a name' input field, a date range, an 'Add tags' button, and a 'View all X items' link. A large blue arrow points to the 'Enter a name' input field of the first group. At the bottom, there is an 'Expand all' dropdown, an 'Adjust groups' slider, and 'Back' and 'Import' buttons. A 'More options' link is in the bottom left corner.


Select the groups you want to import


9 items selected in 3 groups

Your photos and videos are grouped by date and time. Each group will be saved to a different folder. [Get help with this](#)

Select all

 Enter a name 1/23/2012, 7:08 AM to 7:13 AM [View all 4 items](#)
[Add tags](#)

 Enter a name 1/22/2012, 12:09 AM [View 1 item](#)
[Add tags](#)

 Enter a name 1/21/2012, 10:26 PM to 11:12 PM [View all 4 items](#)
[Add tags](#)

Adjust groups:

[More options](#)

Type in Name, Like Duemig




SD Import Photos and Videos

Select the groups you want to import

9 items selected in 3 groups

Your photos and videos are grouped by date and time. Each group will be saved to a different folder. [Get help with this](#)

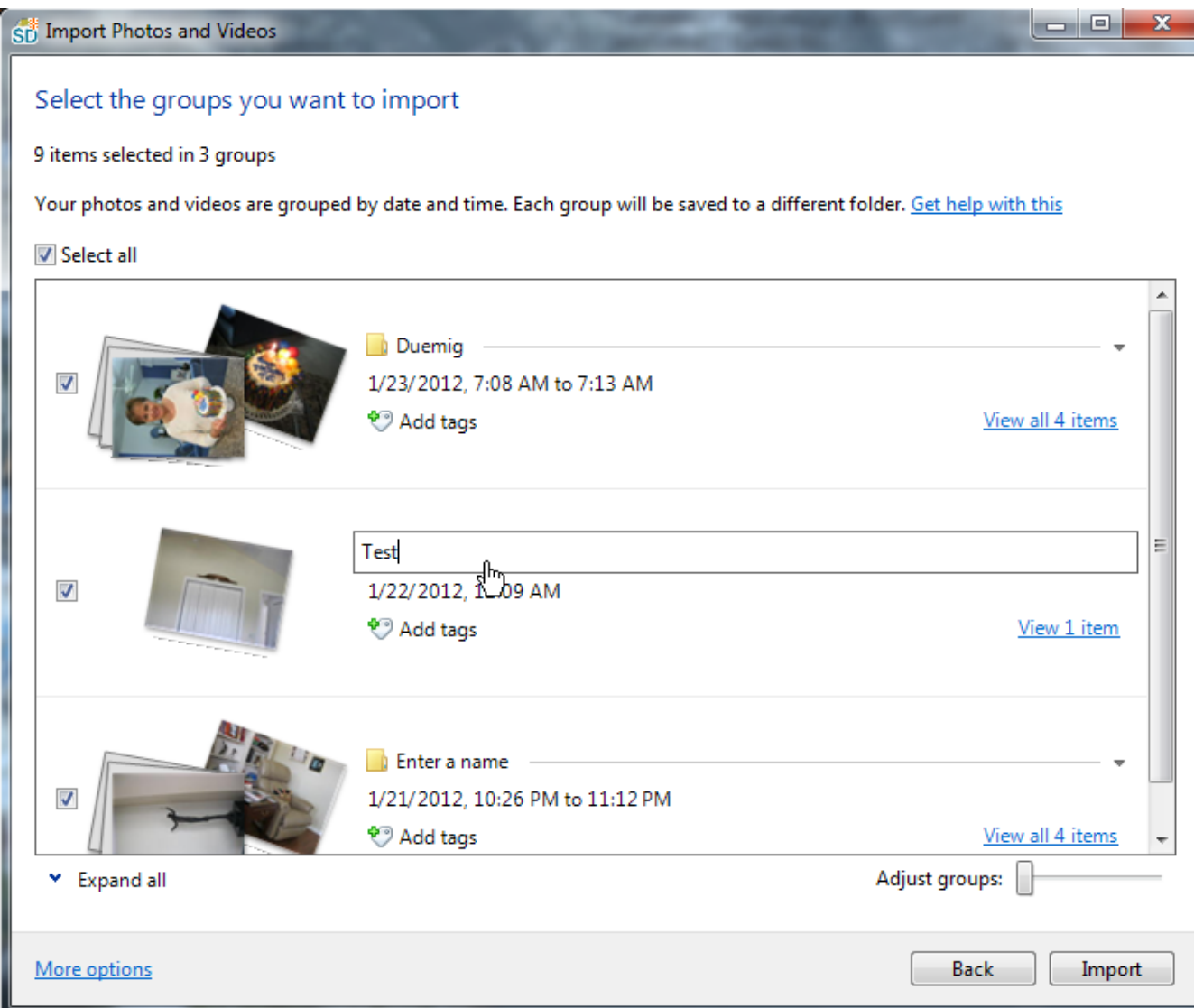
Select all

<input checked="" type="checkbox"/>		<input type="text" value="Duemig"/>	1/23/2012, 7:00 AM to 7:13 AM	<input type="button" value="Add tags"/>	View all 4 items
<input checked="" type="checkbox"/>		<input type="text" value="Enter a name"/>	1/22/2012, 12:09 AM	<input type="button" value="Add tags"/>	View 1 item
<input checked="" type="checkbox"/>		<input type="text" value="Enter a name"/>	1/21/2012, 10:26 PM to 11:12 PM	<input type="button" value="Add tags"/>	View all 4 items

Adjust groups:

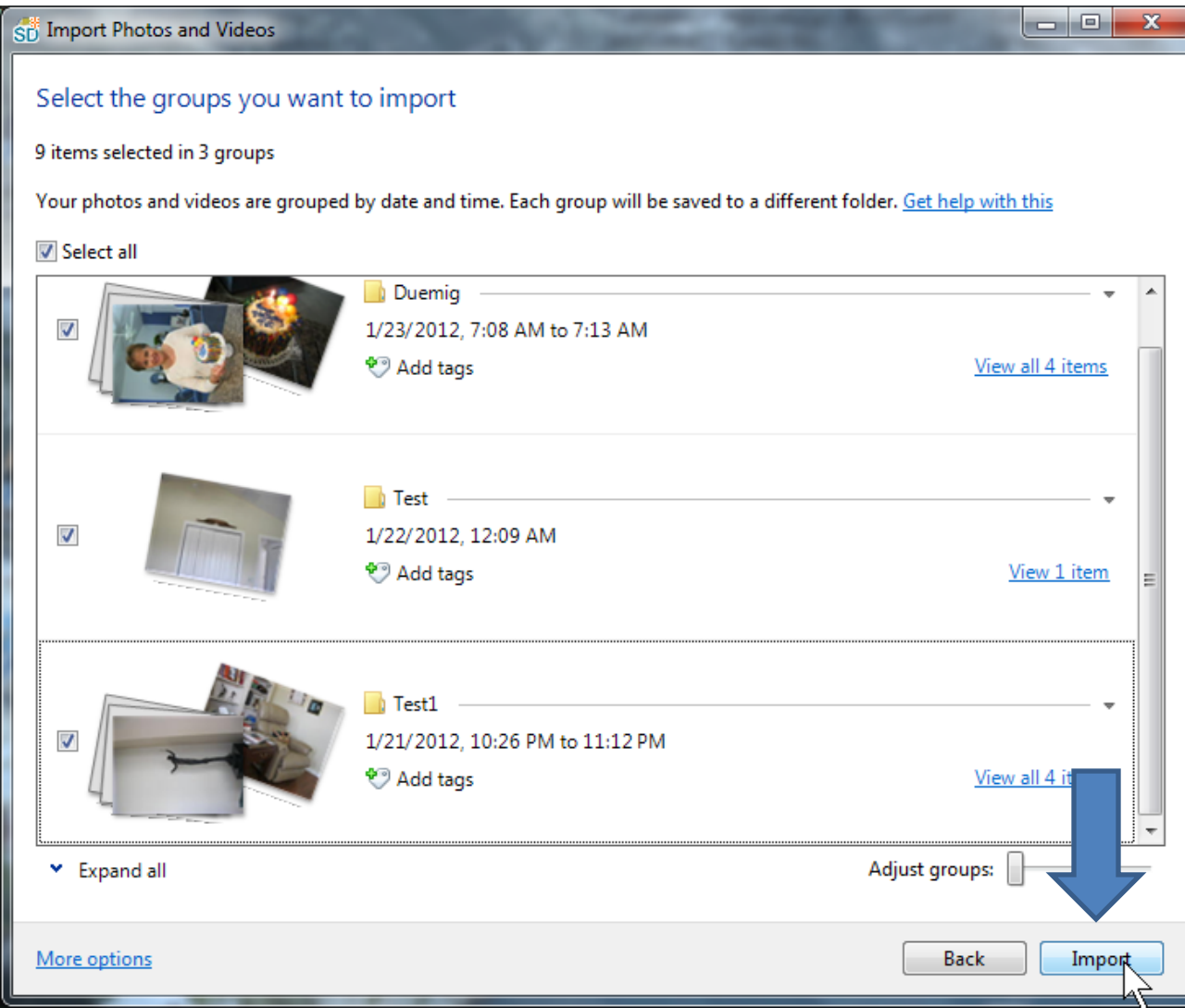
[More options](#)

Repeat the process with the next one, like Test

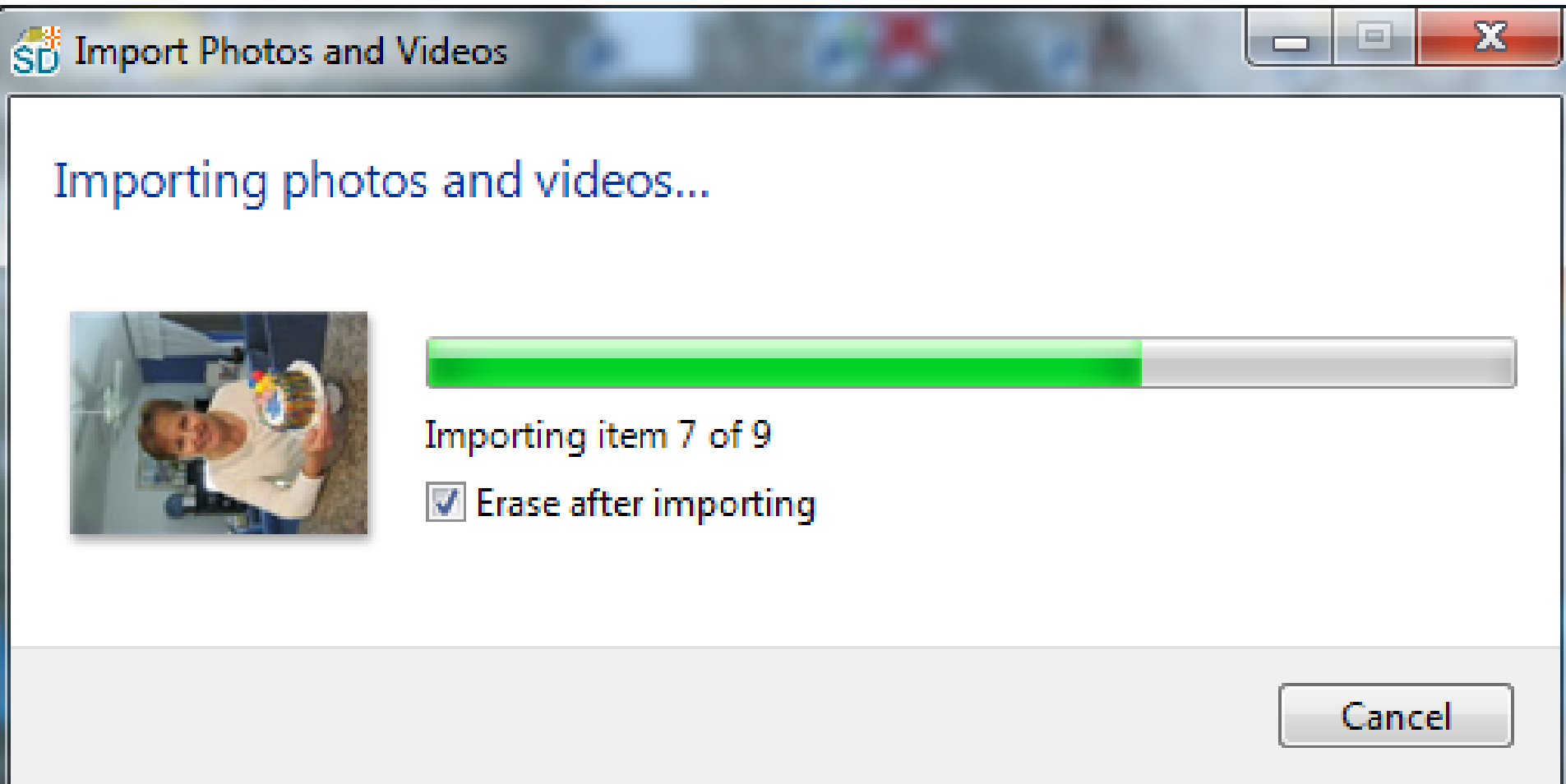


Repeat the process with the next one, like Test1

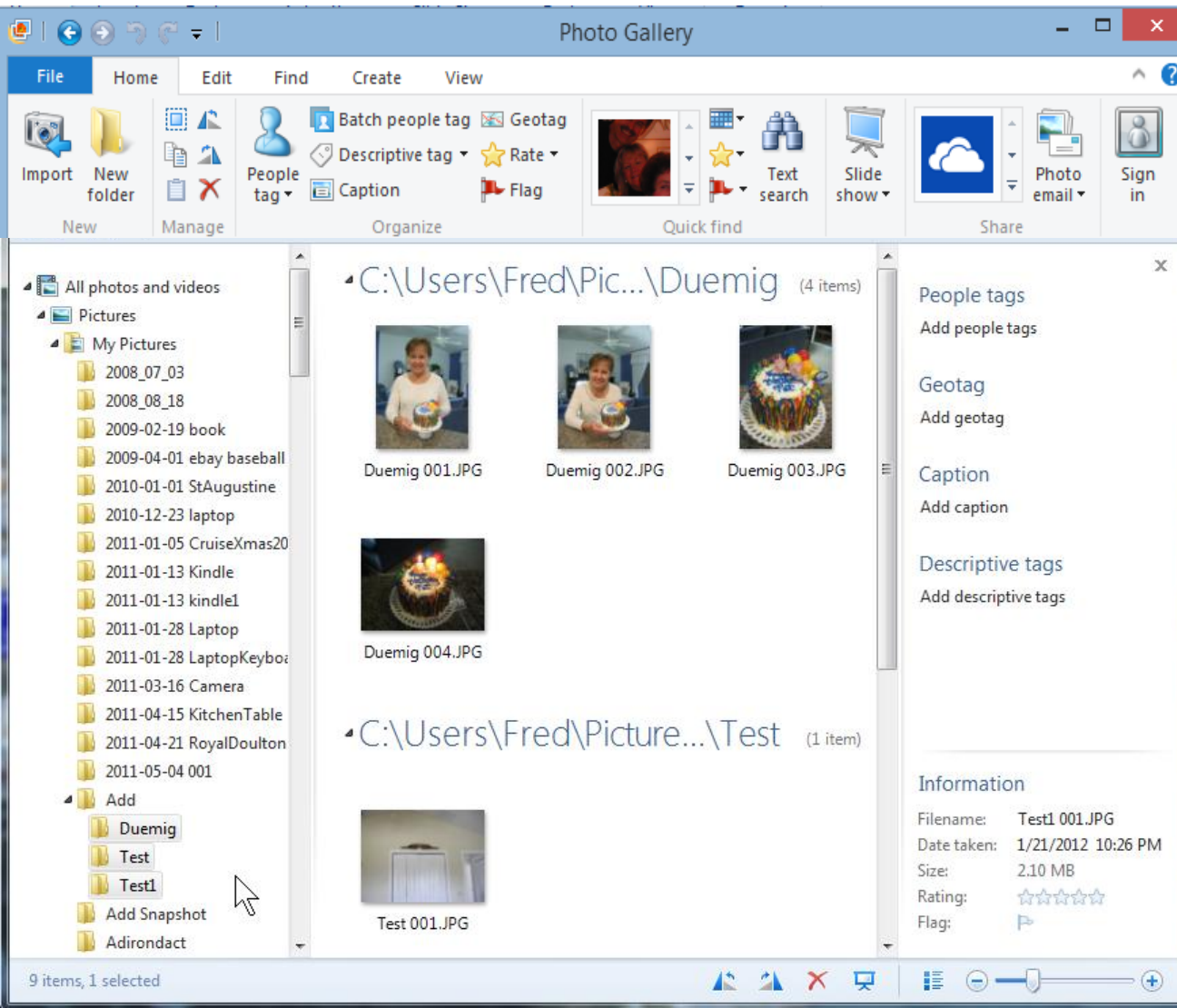
- Then click on Import.



It then shows Importing photos

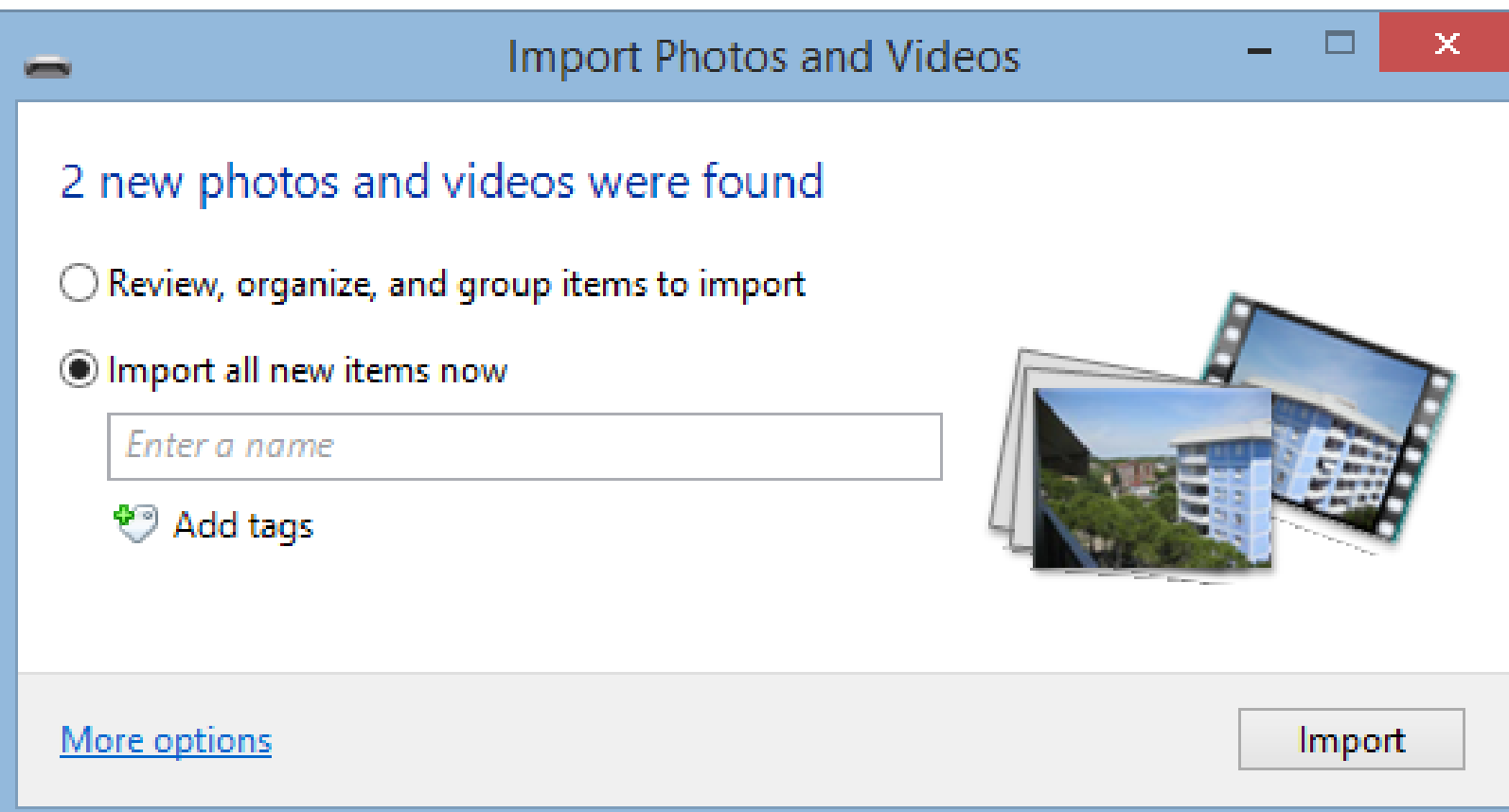


Once complete, Photo Gallery opens and you see them.

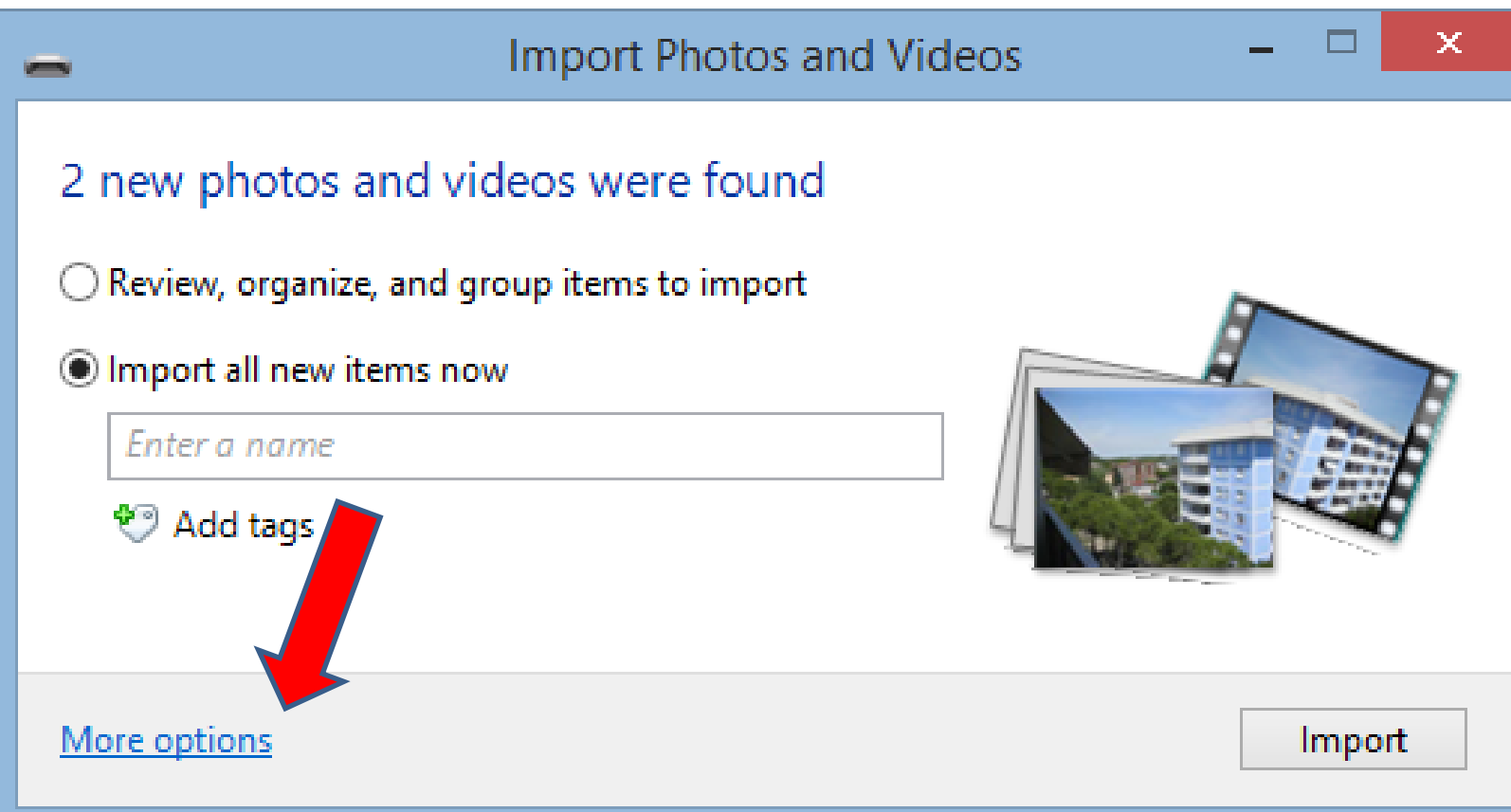


Videos

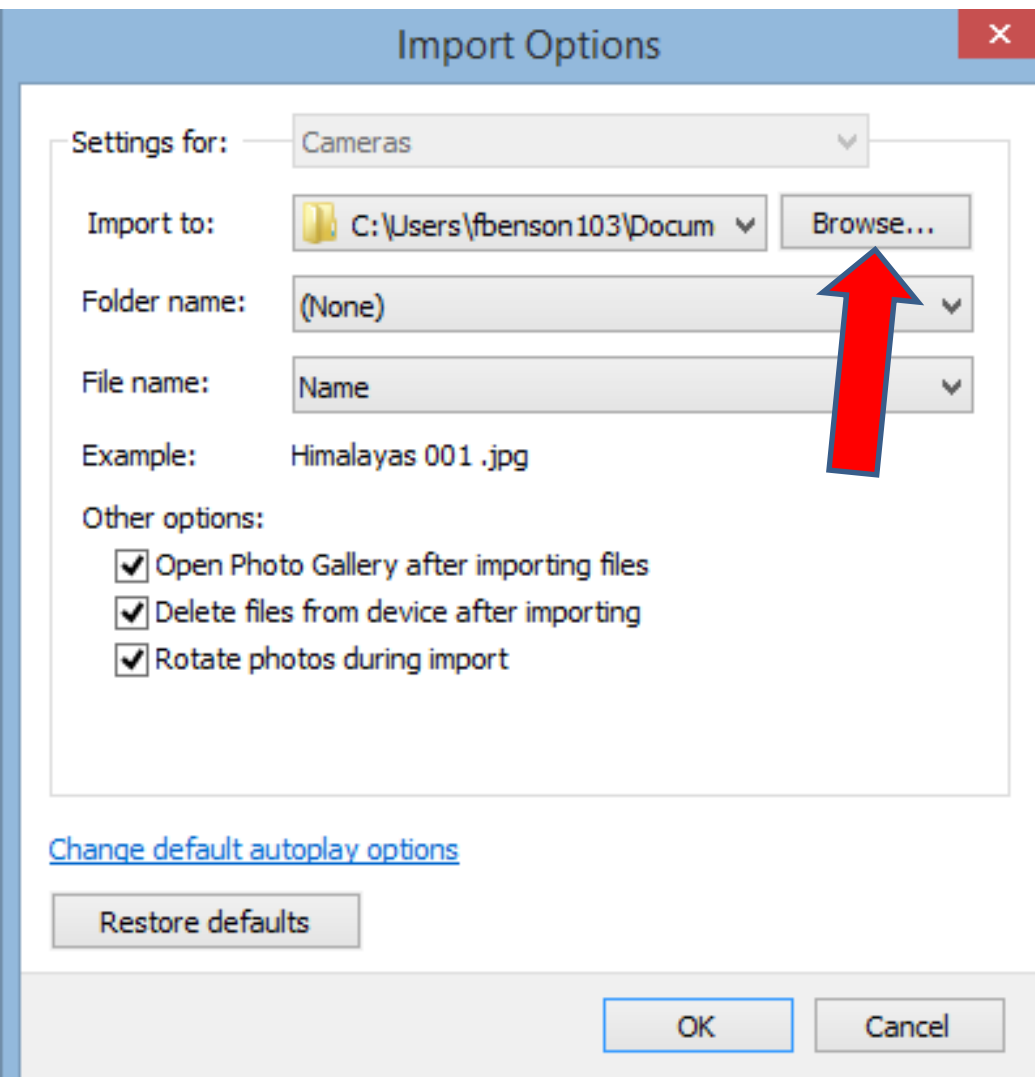
- If you have Video(s) on your camera, the process is the same. Below is a sample of one Photo and one Video.



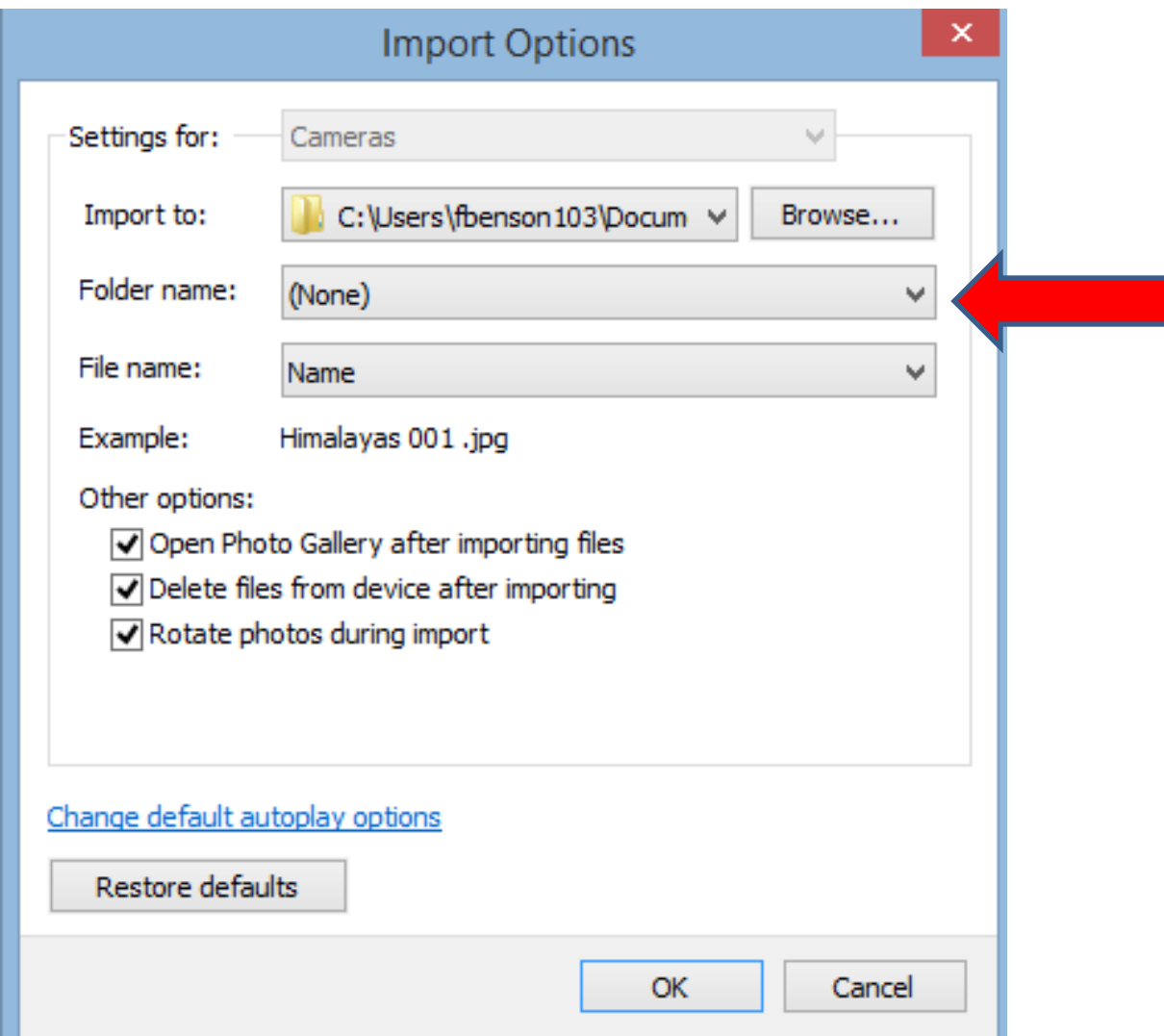
- If you don't need to Organize and just import them all, you click on More options.



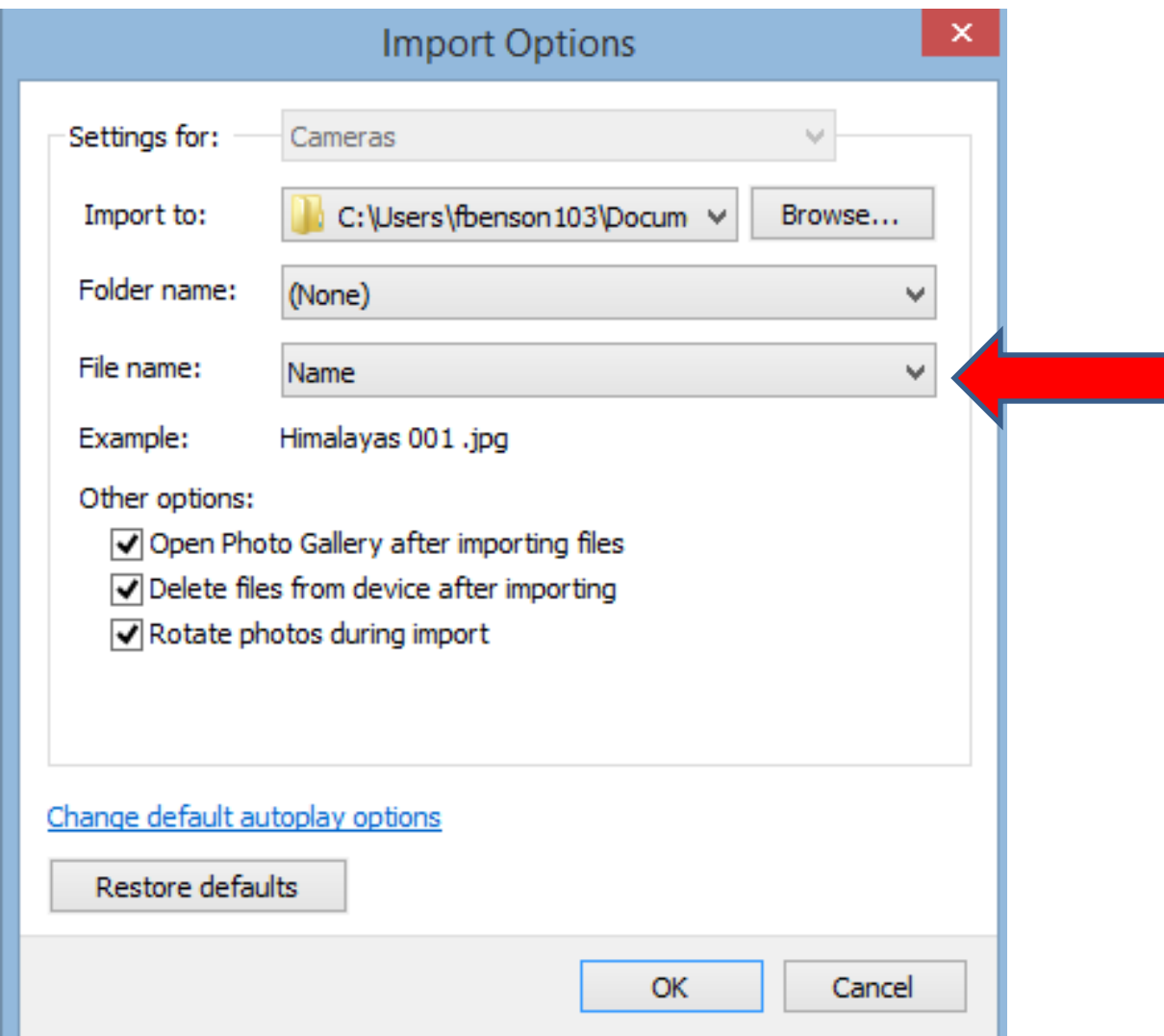
- **First, like I showed you before, you Browse to find the Folder to add them.**



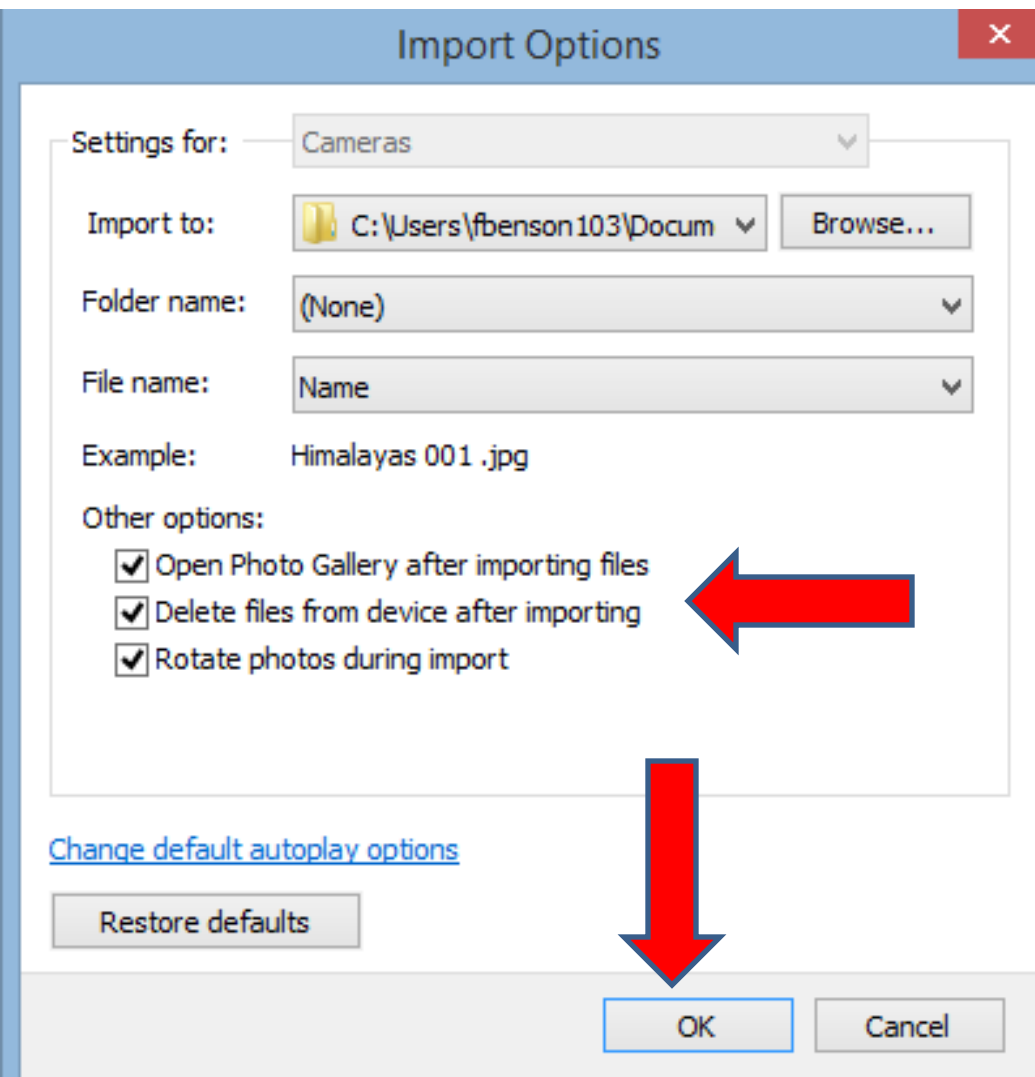
- **Folder name can be none, because you don't need another one.**



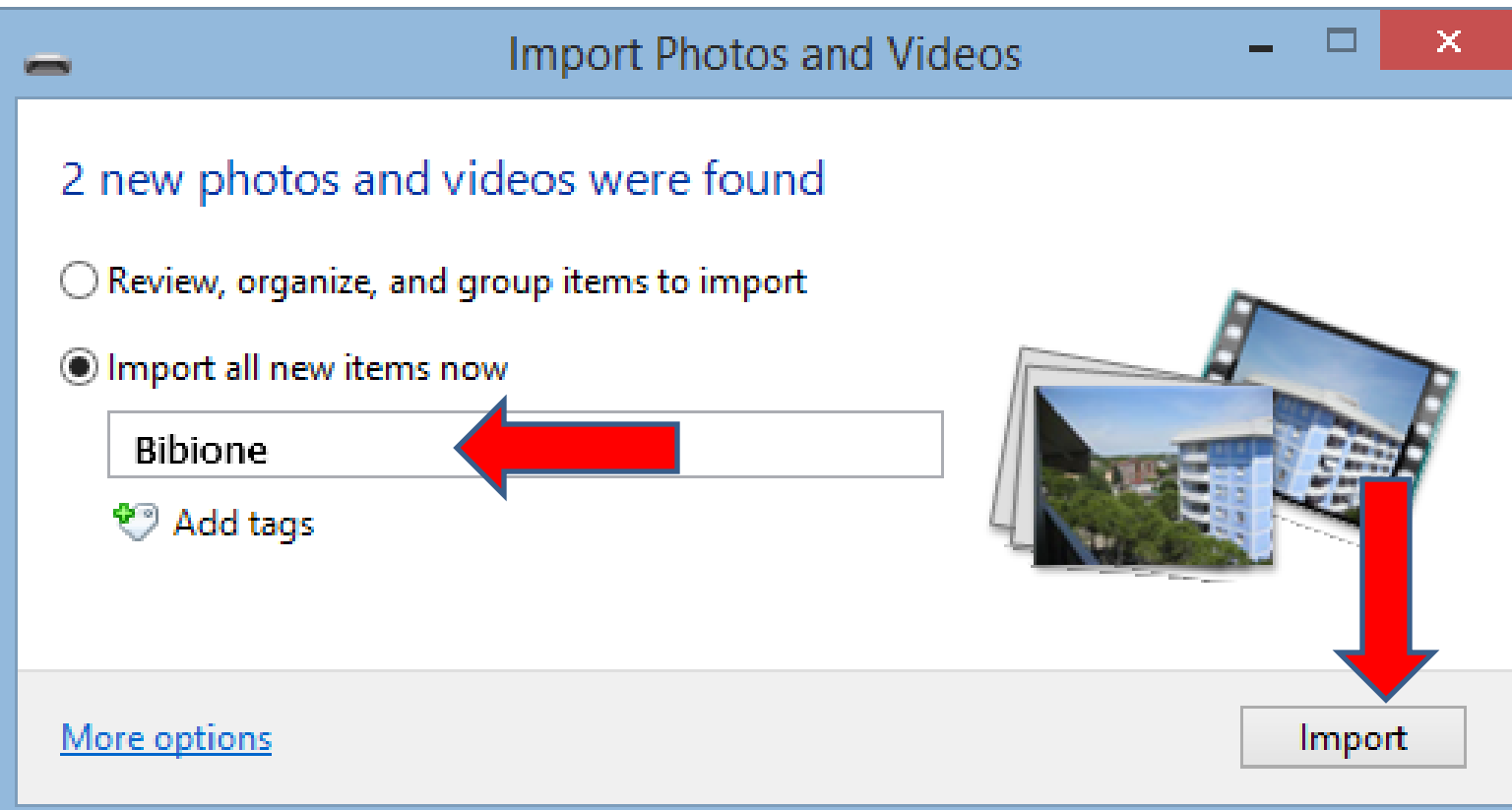
- **Make sure File name is Name**



- **Also, make sure check all boxes and then click on OK**



- Then type in name, like Bibione and then click on Import. Once you do that Photo Gallery shows you them, like I showed you before.
- This is the end of Part A.



End of Step 2 – Part A