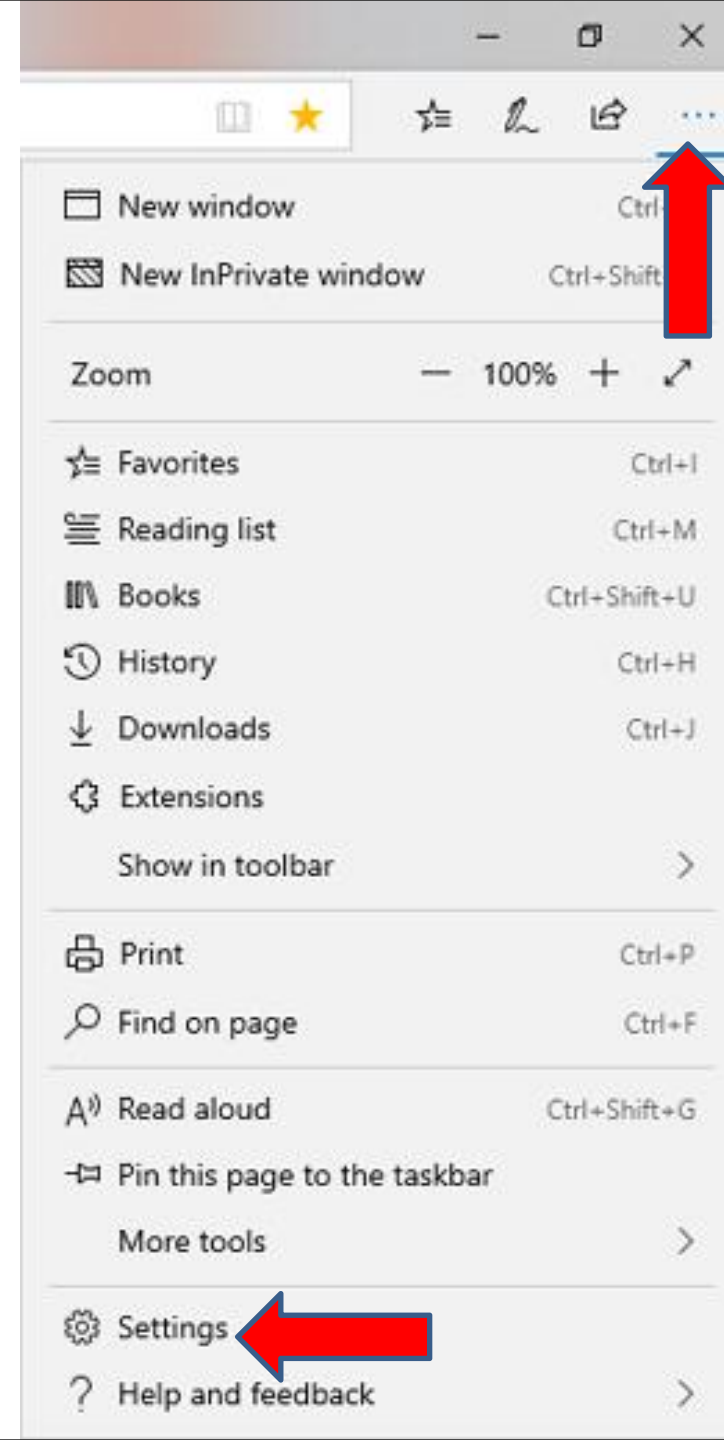


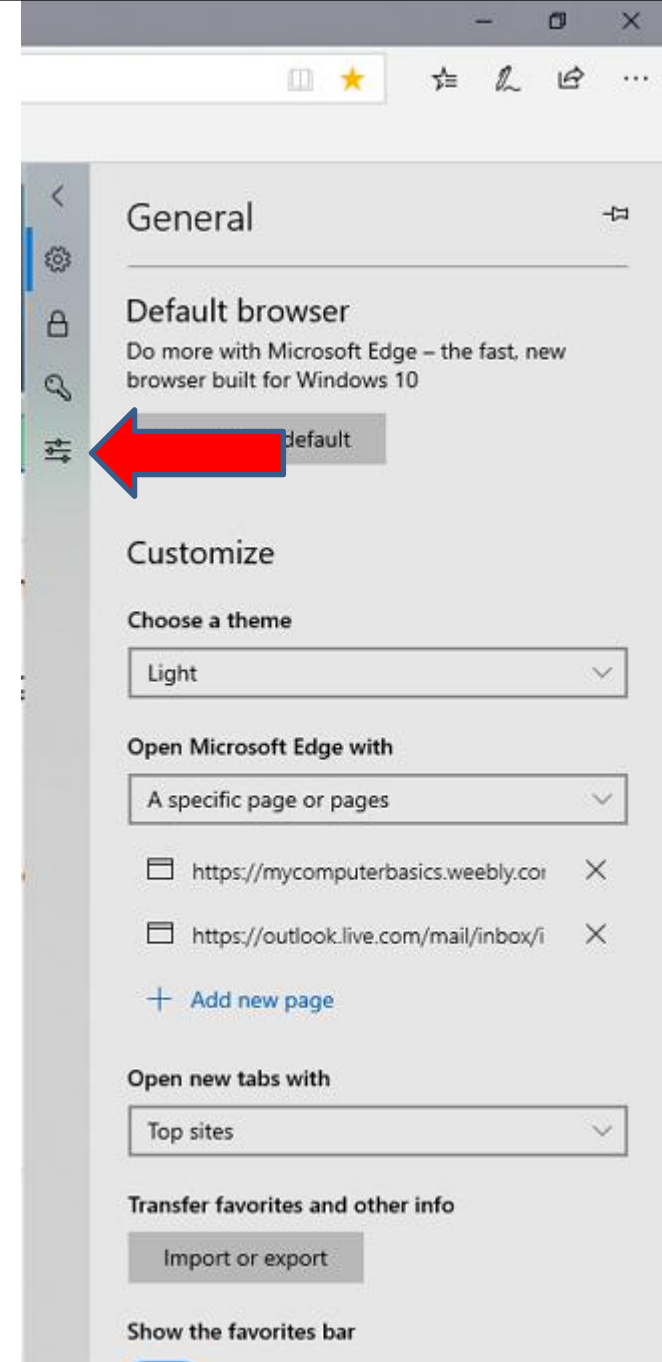
## **Step 7 – Part 1 - How to change the type of Search with Edge.**

- Sometimes the default Search in Edge is Bing. You can change it to another one, like Google that I like.**
- Next is how to change the default search.**

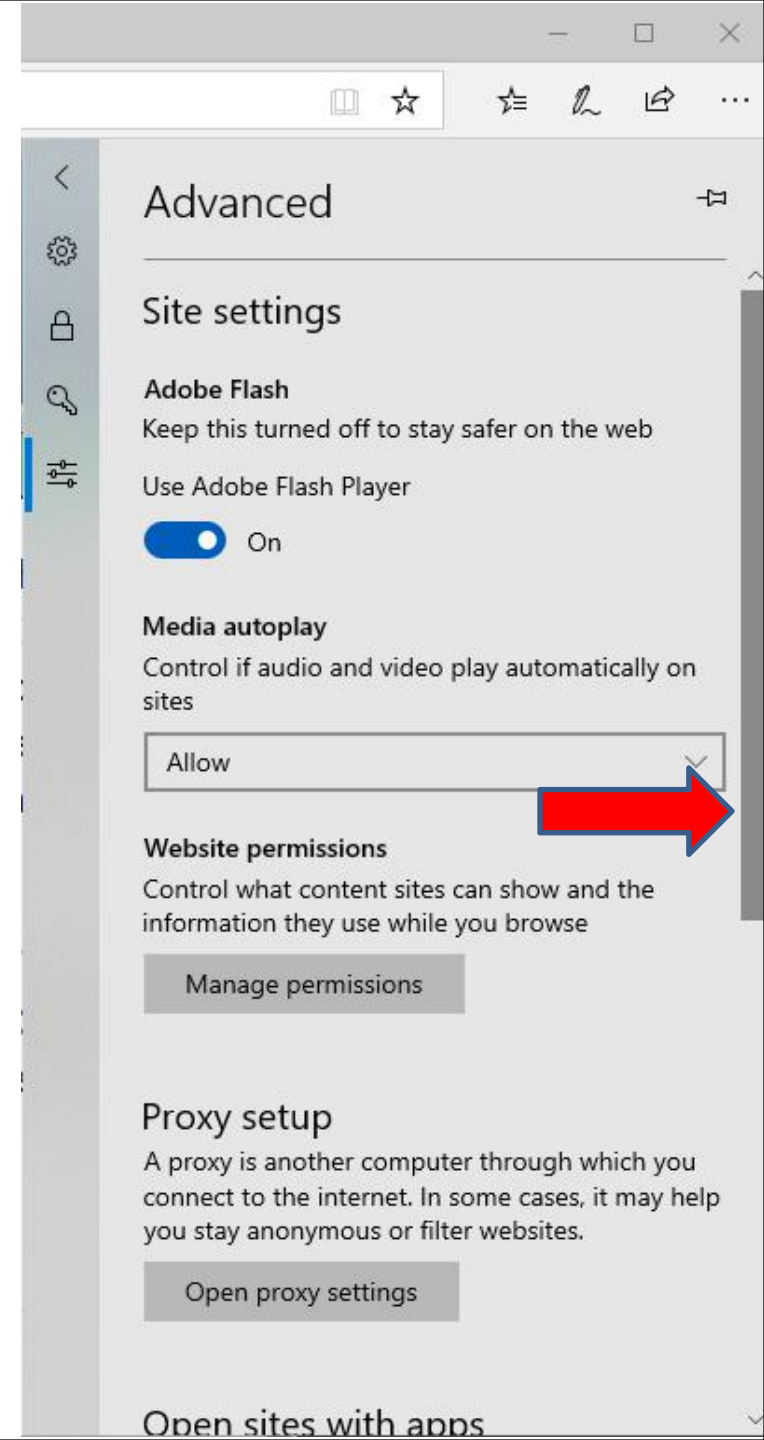
- You click on Icon in the upper right, as I showed you in other Steps and then click on Settings again at the bottom and next is what happens again.



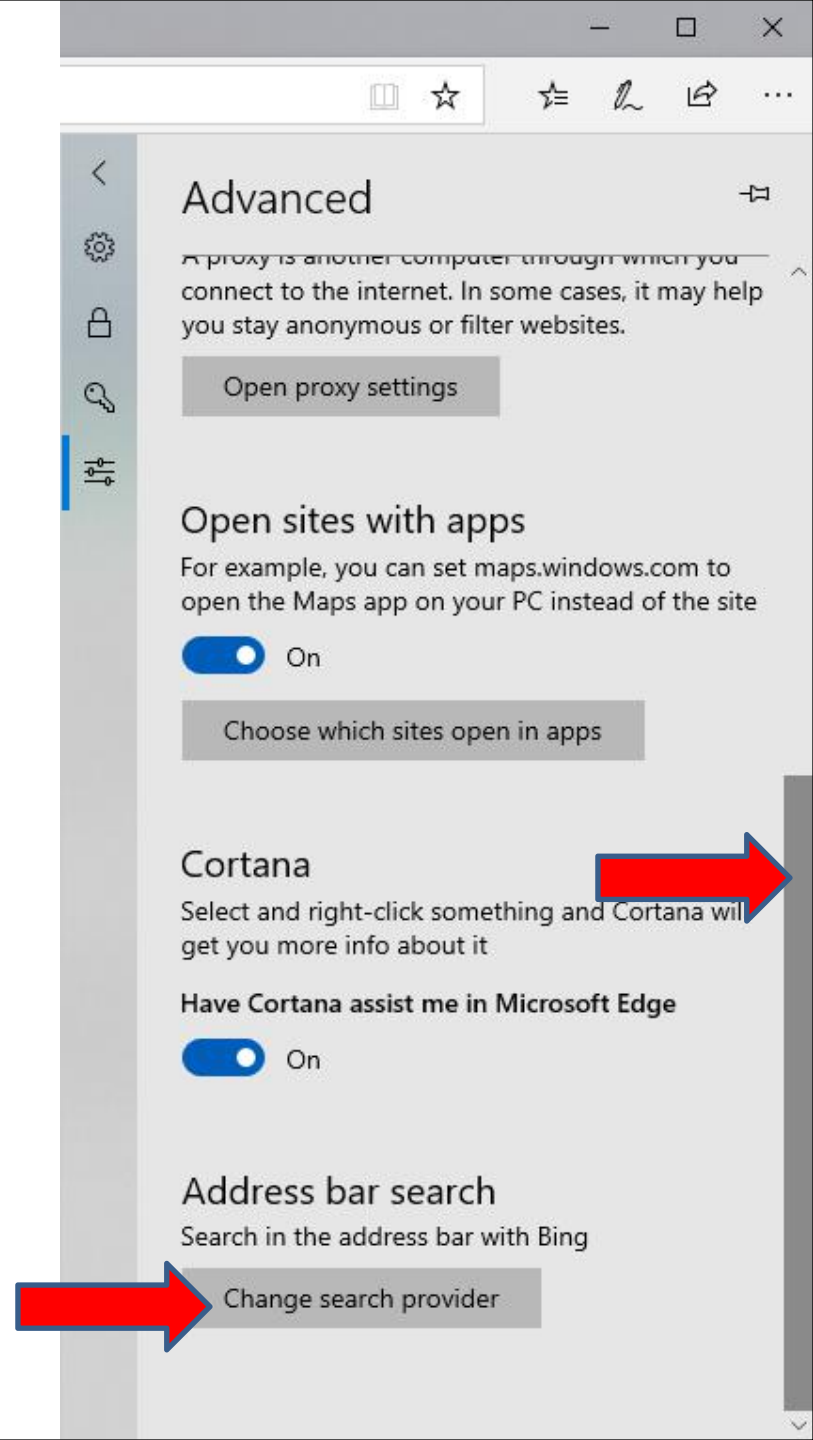
- A new window opens and you have to click on the left icon on left and it is called Advanced. Next is what happens.



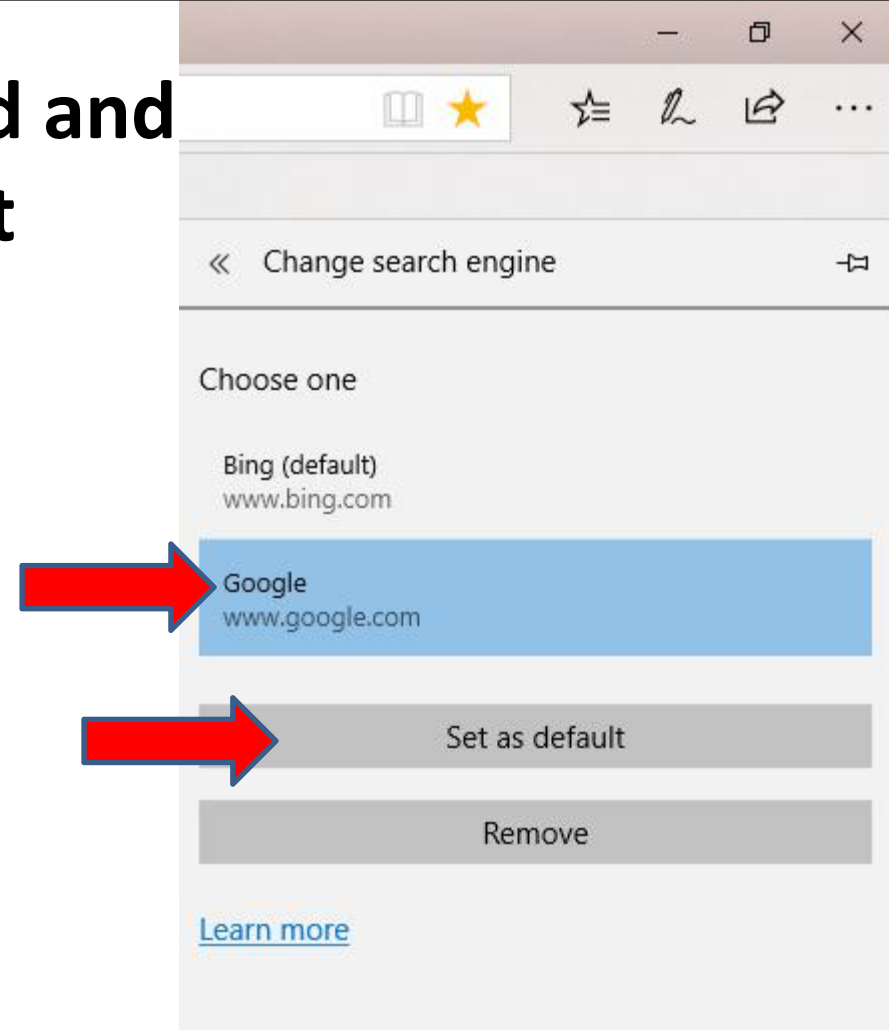
- The window changes and you have hover over the line on the right, like I did and left click on it and scroll it down and next is a sample



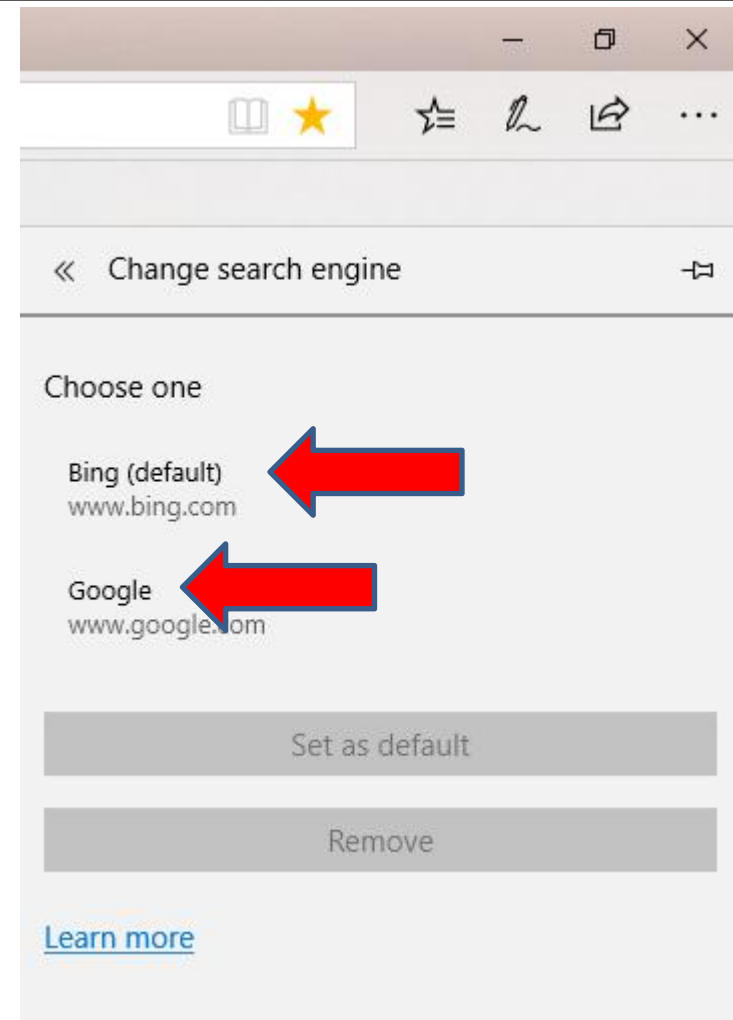
- Here is a simple of scrolling it down and then click on **Change search provider** and next is what happens.



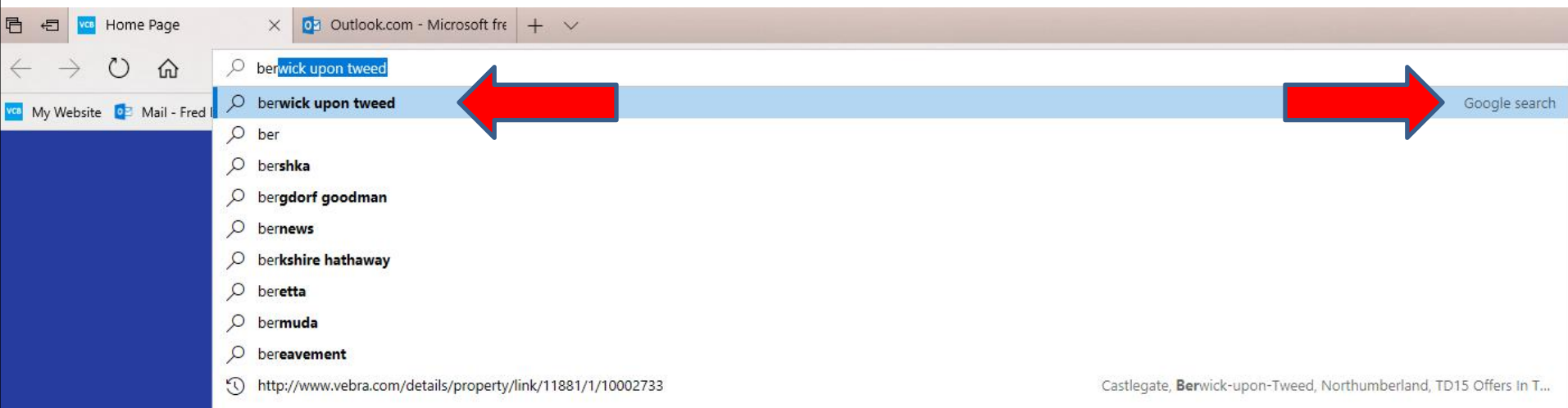
- You see Google highlighted and then click on Set as default below it and next is what happens.



- The window changes again and you see Bing is default and sometimes you see Google. If it is there, I recommend first click on Google.
- If it does not show, you have to type in google.com on a Tab and click on the enter Key. Once you do that and you back to Advanced Settings again, you will see Google.
- Next is what happens when you click on Google.



- **When you start to Search like this one, the other window closes and you see Google search on the right.**
- **Next is what happens when you click on one in the list.**





- The page changes and it goes to Google Search page with a search results and you can do another search.
- This is the End of Step 7 – Part 1 Microsoft Edge.

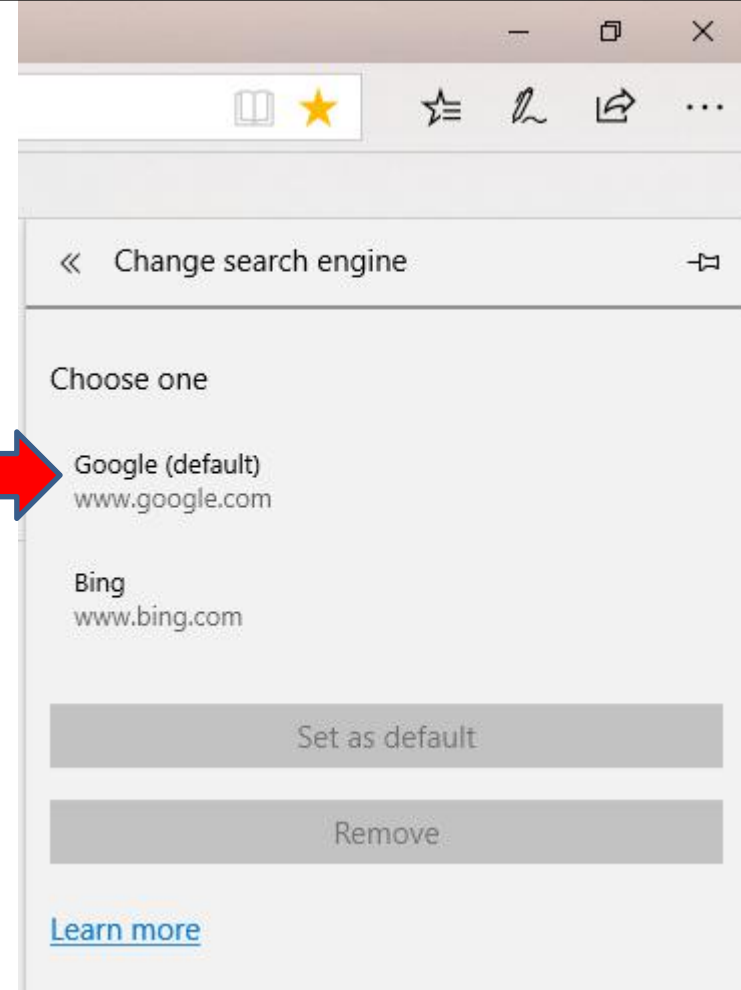
The screenshot shows a Microsoft Edge browser window with the address bar displaying <https://www.google.com/search?q=berwick+upon+tweed&ie=&oe=>. The search bar contains the text "berwick upon tweed". Below the search bar, the search results are displayed. The first result is a Wikipedia entry for "Berwick-upon-Tweed" with a URL <https://en.wikipedia.org/wiki/Berwick-upon-Tweed>. The description states: "Berwick-upon-Tweed is a town in the county of Northumberland. It is the northernmost town in England, at the mouth of the River Tweed on the east coast, 2 1/2 miles (4 km) south of the Scottish border. The United Kingdom Census 2011 recorded Berwick's population as 12,043. A civil parish and town council were created ...". Below the description, it lists "Post town: Berwick-upon-Tweed", "Ceremonial county: Northumberland", "UK Parliament: Berwick-upon-Tweed", and "Country: England". There are also links for "History", "Climate", "Governance", and "Culture".

Below the Wikipedia entry, there is a section titled "Berwick-upon-Tweed tourist information | Visit Northumberland" with a URL <https://www.visitnorthumberland.com/berwick-upon-tweed>. The description says: "Berwick-upon-Tweed tourist information. Find accommodation, things to do, places to eat and what's on in Berwick-upon-Tweed."

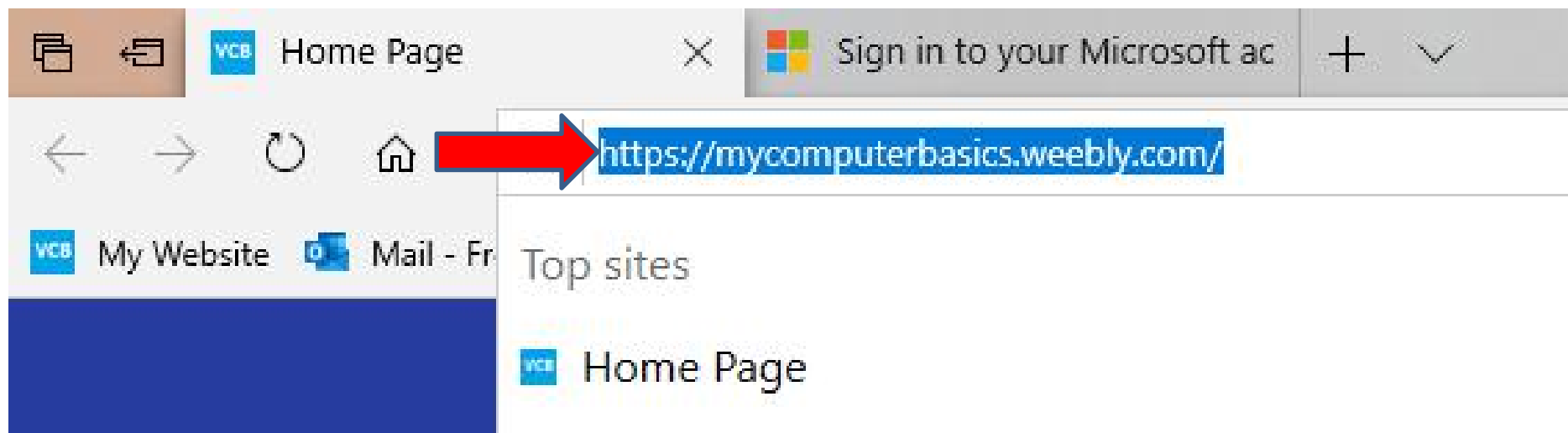
At the bottom of the search results, there is a section titled "Things to do in Berwick-upon-Tweed" with four images and captions: "Berwick Castle", "Union Bridge", "Berwick town walls", and "Royal Border".

On the right side of the search results, there is a map of Berwick-upon-Tweed and a detailed information card. The card title is "Berwick-upon-Tweed" and it is labeled "Town in England". The description repeats the Wikipedia entry: "Berwick-upon-Tweed is a town in the county of Northumberland. It is the northernmost town in England, at the mouth of the River Tweed on the east coast, 2 1/2 miles south of the Scottish border. Wikipedia". Below the description, it lists "Weather: 45°F (7°C), Wind SE at 12 mph (19 km/h), 94% Humidity", "Population: 12,043 (2011 Census)", and "Unitary authority: Northumberland County Council". There is also a "Plan a trip" section with a link to "Berwick-upon-Tweed travel guide".

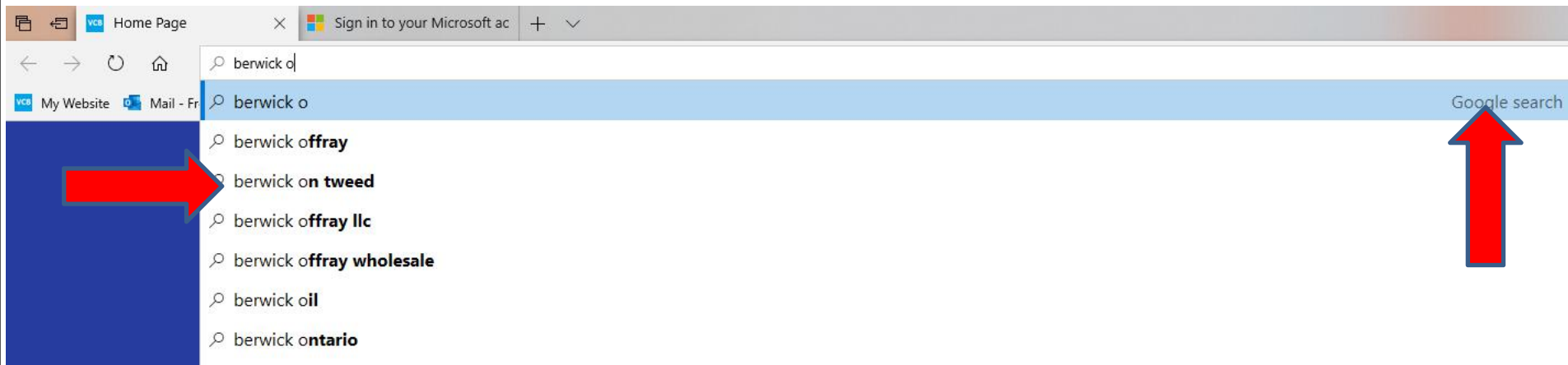
- You then see Google is default.
- Next is what happens when you Search.



- You then see click on the URL as I did and you see it highlighted.
- Then type in the one you want to search and next is sample.



- Here is a sample of typing like berwick o and you see a list and you see Google search on the right. I decided to click on berwick on tweed and next is what happens.



- The home page goes to Google search vs. Bing. This is the End of Step 7 Edge.

The screenshot shows a Windows Edge browser window with the following elements:

- Address Bar:** <https://www.google.com/search?q=berwick+on+tweed&ie=&oe=>
- Search Bar:** Contains the text "berwick on tweed".
- Navigation:** "All", "Maps", "Images", "Shopping", "News", "More", "Settings", "Tools".
- Results:**
  - Advertisement:** "Berwick-Upon-Tweed Hotels | Lowest Price Guarantee | booking.com". Includes a link to [www.booking.com/Hotels](http://www.booking.com/Hotels) and a description: "Book your Hotel in Berwick-Upon-Tweed online. No reservation costs. Great rates. Motels. Get Instant Confirmation. Hotels. We speak your language. Bed and Breakfasts. Villas. No Booking ... Apartments for tonight · Homes & Apartments · Flexible Reservations · More than just hotels".
  - Local Pack:** "Top things to do in Berwick-upon-Tweed".
    - Royal Border Bridge:** "Old railway bridge with many arches".
    - Berwick Castle:** "Ruined castle overlooking the North".
    - The Maltings:** "Performing arts centre with 2 stages".
    - Berwick Bridge:** "Bridge".
  - Map:** A small map showing the location of Berwick-upon-Tweed.
  - Knowledge Panel:** "Berwick-upon-Tweed".
    - Sub-heading: "Town in England".
    - Description: "Berwick-upon-Tweed is a town in the county of Northumberland. It is the northernmost town in England, at the mouth of the River Tweed on the east coast, 2 1/2 miles south of the Scottish border. [Wikipedia](#)".
    - Weather: "45°F (7°C), Wind N at 6 mph (10 km/h), 65% Humidity".
    - Population: "12,043 (2011 Census)".
    - Local time: "Thursday 8:00 PM".
    - Section: "Plan a trip".
    - Item: "Berwick-upon-Tweed travel guide".
  - Wikipedia Entry:** "Berwick-upon-Tweed - Wikipedia".
    - URL: <https://en.wikipedia.org/wiki/Berwick-upon-Tweed>
    - Text: "Berwick-upon-Tweed is a town in the county of Northumberland. It is the northernmost town in..."