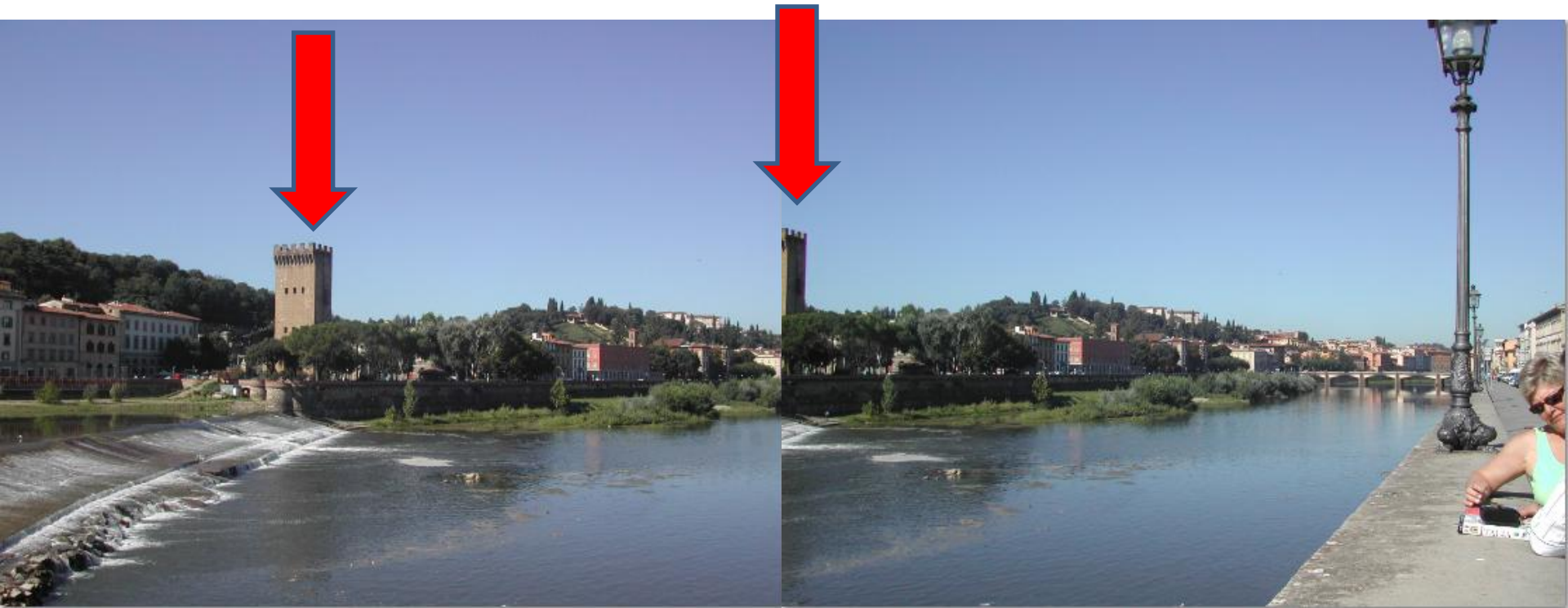


# Step 8 – Part A - Panorama

- **When you do a Create, like Panorama, you don't need to copy, because it is a separate photo.**
- **To create a Panorama, you first have to have two or more pictures of a region and they have to have same portion on each picture. Next is a sample.**

- Below is a sample of two pictures. You see on the second picture that starts on with the tower area.
- Next is how to create the Panorama.



- You click on the first photo and then click on the upper left of the second photo. Or, you press and hold the Ctrl key and select the two photos.



River View 3.JPG



River View 4.JPG  
Thursday, August 31, 2006 9:06 AM

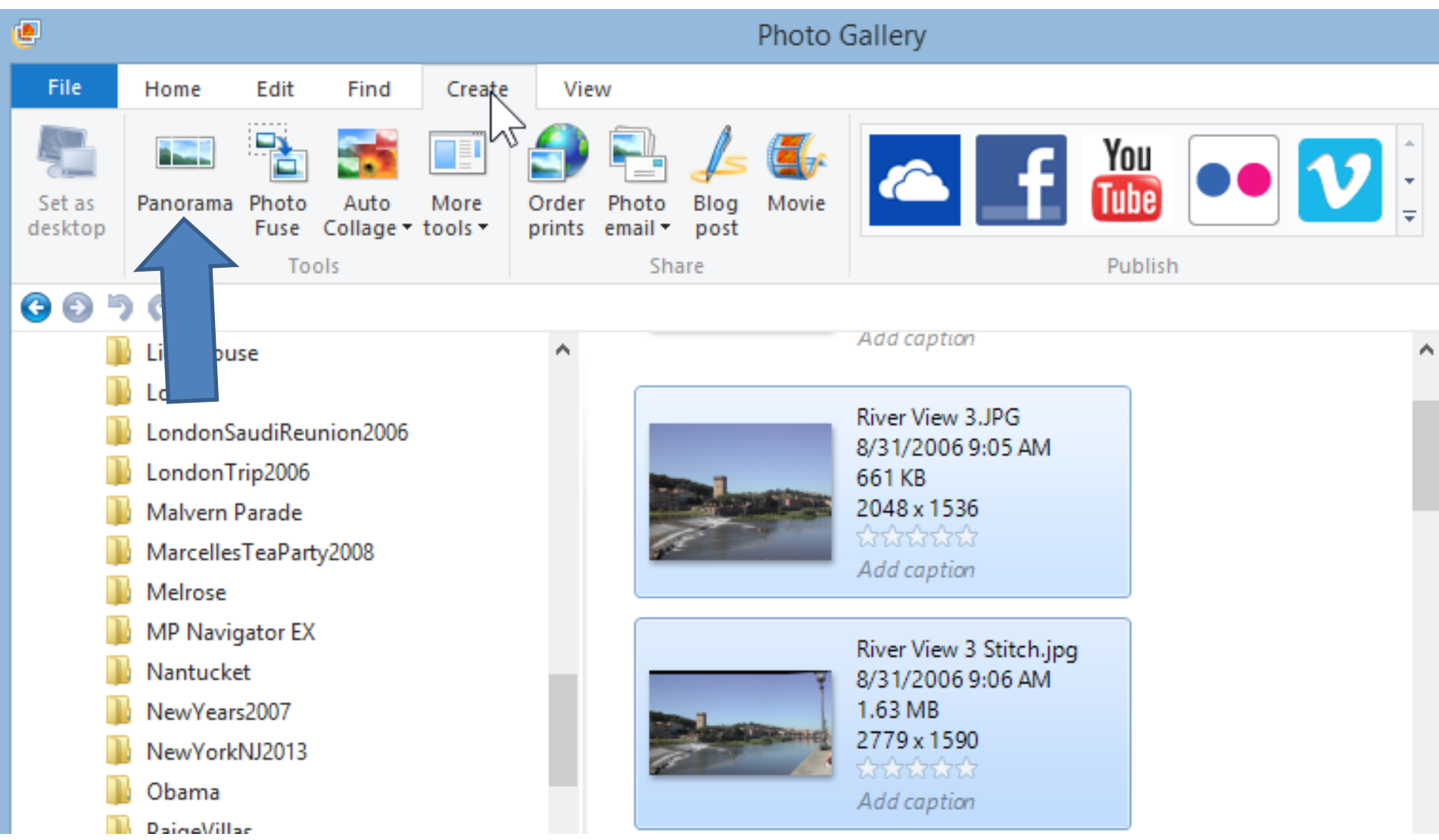


River View 4.JPG

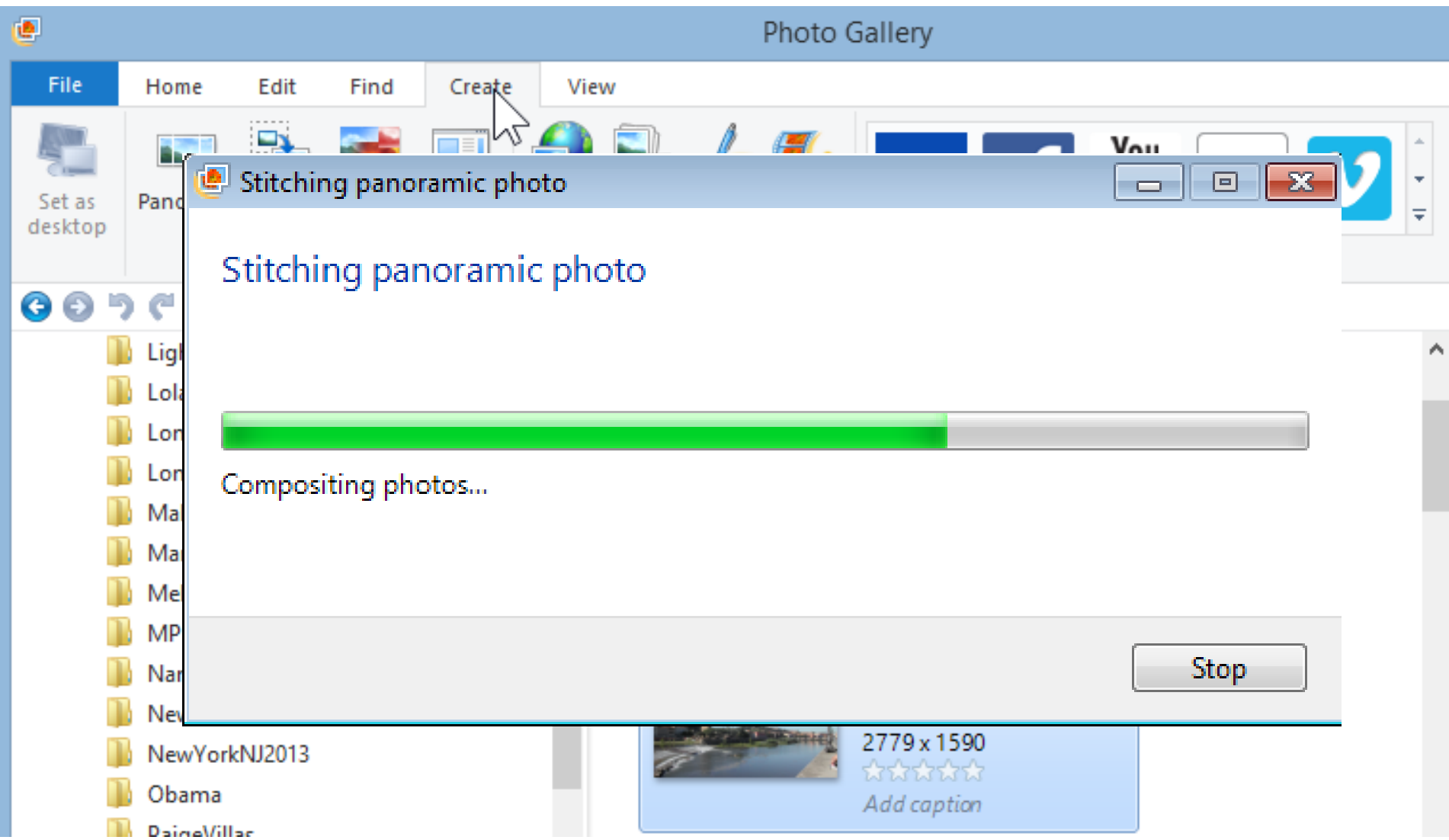
# • Then, you click on Create Tab.

The screenshot shows the Windows Photo Gallery application. The ribbon at the top has tabs for File, Home, Edit, Find, **Create**, and View. The **Create** tab is active, showing three sections: Tools, Share, and Publish. The Tools section includes 'Set as desktop', 'Panorama', 'Photo Fuse', 'Auto Collage', and 'More tools'. The Share section includes 'Order prints', 'Photo email', 'Blog post', and 'Movie'. The Publish section includes icons for OneDrive, Facebook, YouTube, Instagram, and Twitter. Below the ribbon is a navigation bar with back, forward, and refresh buttons. The main area is divided into a left sidebar with a folder list and a right pane showing photo thumbnails. The folder list includes: Lighthouse, Lola, LondonSaudiReunion2006, LondonTrip2006, Malvern Parade, MarcellesTeaParty2008, Melrose, MP Navigator EX, Nantucket, NewYears2007, NewYorkNJ2013, Obama, and DaineVillar. The right pane shows two photo thumbnails. The first thumbnail is titled 'River View 3.JPG' with metadata: 8/31/2006 9:05 AM, 661 KB, 2048 x 1536, and five stars. The second thumbnail is titled 'River View 3 Stitch.jpg' with metadata: 8/31/2006 9:06 AM, 1.63 MB, 2779 x 1590, and five stars. Both thumbnails have an 'Add caption' link.

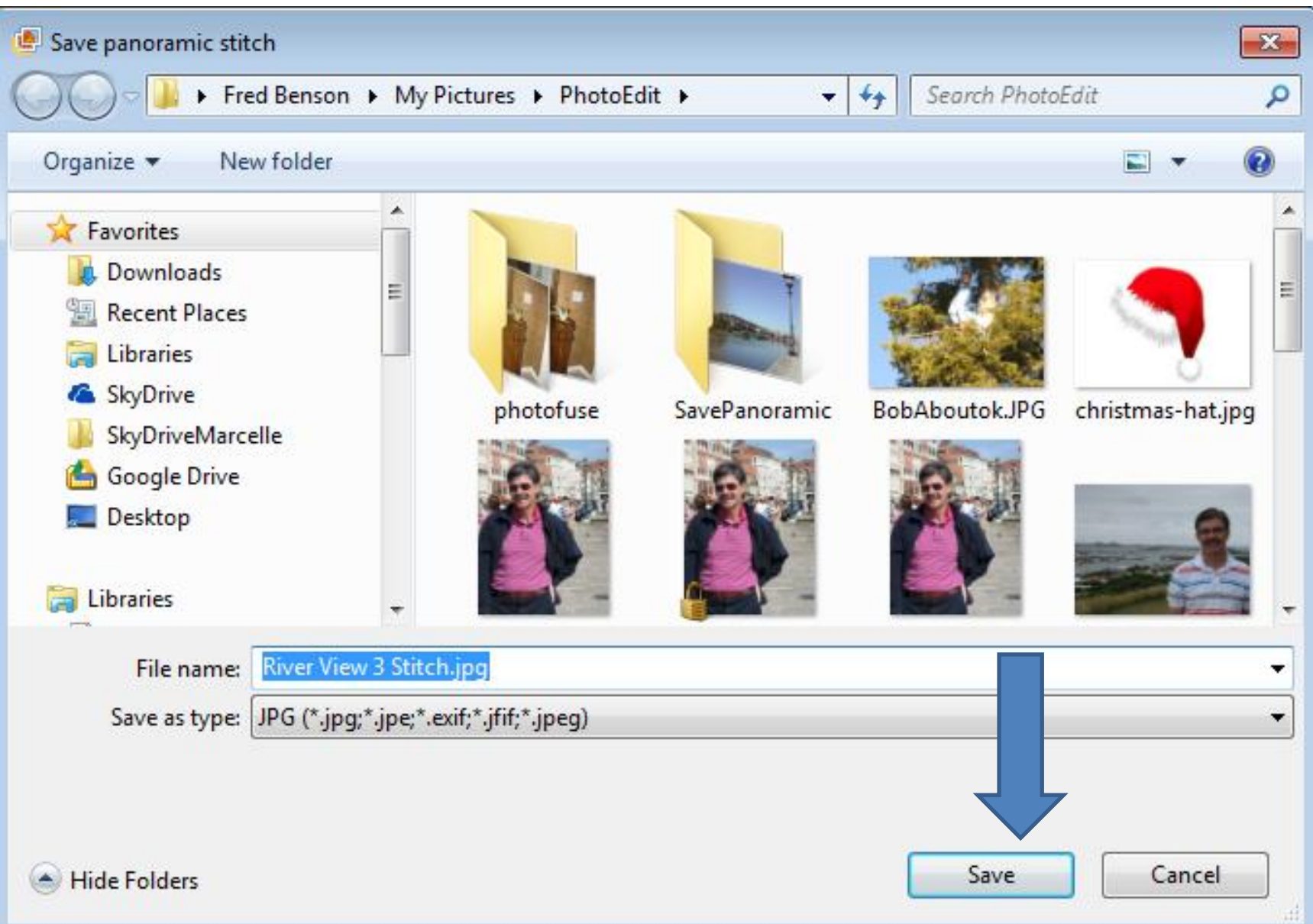
- Then, click on Panorama.



- You then see a new window **Stitching panoramic photo**.



- Once finished, windows explorer opens. You can change name, then click on Save.



- It then opens it in Edit and you click on Crop to fix

River View 3 Stitch2.jpg - Photo Gallery

File Edit Create View

Previous Next Iterate Manage Organize Adjustments Effects

Make a copy Tag and caption Properties Rate Flag Properties Crop Retouch Straighten Exposure Noise reduction Color Fine tune Revert to original



- Adjust exposure
- Adjust color
- Straighten photo
- Adjust detail

Navigation icons: Previous, Next, Refresh, Home, Stop, Full Screen, Zoom In, Zoom Out, Close




# • Follow same Crop process of Step 6 – Part B.

River View 3 Stitch2.jpg - Photo Gallery

File Edit Create View

Previous Next Iterate Manage Organize Adjustments Effects Revert to original

Auto adjust Crop Red eye Retouch Straighten Noise reduction Color Exposure Fine tune



Adjust exposure  
Adjust color  
Straighten photo  
Adjust detail

4 of 25

- You notice, my crop has black on the top. I will explain why I did that next. Once finished, click on Close file in upper right.

River View 3 Stitch2.jpg - Photo Gallery

File Edit Create View

Previous Next Iterate

Make a copy Manage

Tag and caption Organize

Rate Flag Properties

Auto adjust Crop Adjustments

Red eye Retouch Straighten

Noise reduction Color Exposure

Fine tune

Effects

Revert to original



- Adjust exposure
- Adjust color
- Straighten photo
- Adjust detail

# Why keep the Black on Top?

- There is a free Photo Edit program called PicPick. I use that to fix the Black on the Top and other options.
- To learn about PicPick, click on this [LINK](#) that takes you to a page on my website that had a video that explains PicPick and about after 5 minutes it show you how to fix the Panorama.
- This is the end of Part A.